



SYMON SMITH

RESIDENTIAL & COMMERCIAL ESTATE AGENTS
AND PROPERTY MANAGEMENT

240 Stamford Hill, London, N16 6TT

Sales: 020 8802 0025
sales@symonsmith.co.uk
Management: 020 8802 0022
management@symonsmith.co.uk



251 Waverley Road, London, N17 0PX

£240,000

Nestled on Waverley Road in London, this spacious one-bedroom flat offers a delightful living experience in a vibrant area. Spanning an impressive 599 square feet, the property boasts a well-proportioned reception room, perfect for both relaxation and entertaining. The bedroom provides a comfortable retreat, while the bathroom is conveniently located to serve both residents and guests.

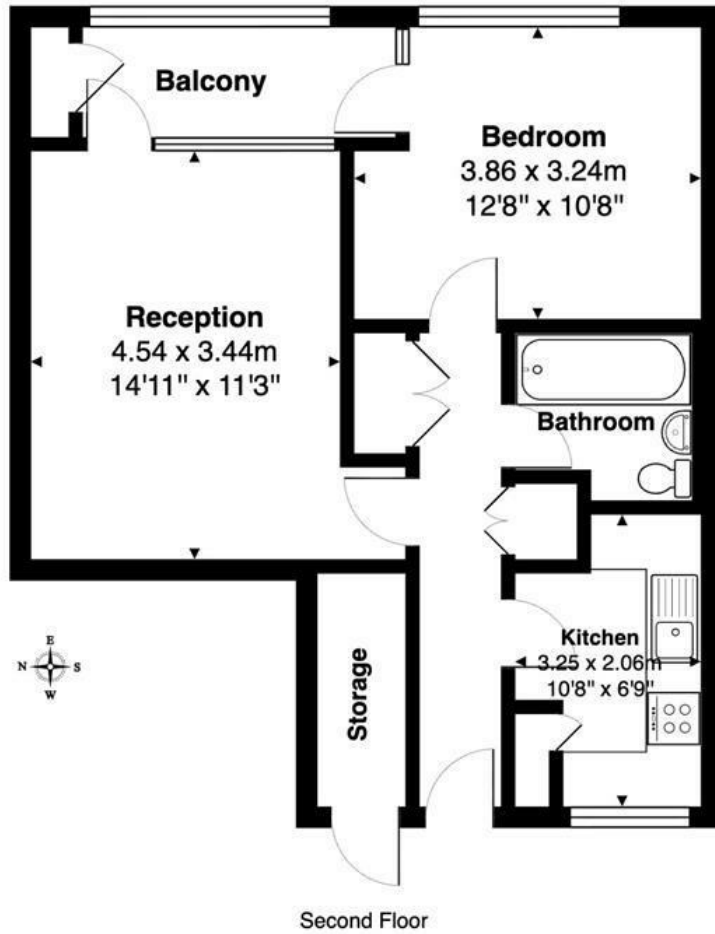
Built in 1970, this flat combines classic charm with modern living, making it an ideal choice for first-time buyers or those looking to downsize. The property is chain-free, allowing for a smooth and efficient purchase process.

One of the standout features of this flat is its excellent transport links. A short walk will take you to Northumberland Park station, providing easy access to the wider London area. This makes commuting a breeze, whether for work or leisure.

In summary, this one-bedroom flat on Waverley Road is a fantastic opportunity for anyone seeking a comfortable and conveniently located home in London. With its spacious layout and superb transport connections, it is sure to appeal to a variety of buyers. Don't miss the chance to make this charming flat your own.

- One Bedroom
- Spacious
- Short Walk to Multiple Train Stations
- Chain Free
- Close To Local Amenities
- EPC TBC
- Council Tax Band B

Waverley Rd, London, N17 0PX



Total Area: 55.7 m² ... 599 ft²

All measurements are approximate and for display purposes only.



WWW.SYMONSMITH.CO.UK