

Score	Energy rating	Current	Potential
92+	<b>A</b>		
81-91	<b>B</b>		
69-80	<b>C</b>	72 C	78 C
55-68	<b>D</b>		
39-54	<b>E</b>		
21-38	<b>F</b>		
1-20	<b>G</b>		

# Oakley Road

Islington, N1

Asking Price £900,000

A charming and spacious three-bedroom garden flat with accommodation arranged across the lower ground floor of this substantial Victorian end of terrace house, benefitting from sole use of a private garden.



# Oakley Road

## Islington, N1

- Three double bedroom garden flat
- Two bathrooms
- Sole use of private garden
- Private entrance
- Quite tree lined road
- Set within the East Canonbury conservation area



A charming and spacious three-bedroom garden flat with accommodation arranged across the lower ground floor of this substantial Victorian end of terrace house, benefitting from sole use of a private garden. Accommodation comprises; 3 double bedrooms with the master bedroom featuring an en-suite bathroom; family bathroom; semi-open plan kitchen/living space. The property benefits from its own private entrance and sole use of a beautiful rear garden. Oakley Road is an exceptionally quiet residential street in popular De Beauvoir, just a short walk from Islington's Upper Street and Essex Road. It is ideally situated for transport links to The City and the West End, with Canonbury Station (London Overground) and Highbury and Islington station (Victoria Line) both within walking distance, as well as excellent bus routes from both Essex Road and Southgate Road. There is a lively local community and the renowned, local, De Beauvoir Deli is right around the corner.

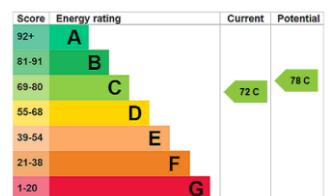
**Tenure:** Share of Freehold 90 years 10 months

**Service Charge:** £1012 This is the contribution towards the building's insurance.  
Additional expenditure is split 4 ways.

**Ground Rent:** £0

**Local Authority:** Islington Council

**Council Tax Band:** D



### *Chestertons Islington Sales*

327-329 Upper Street

Islington

London

N1 2XQ

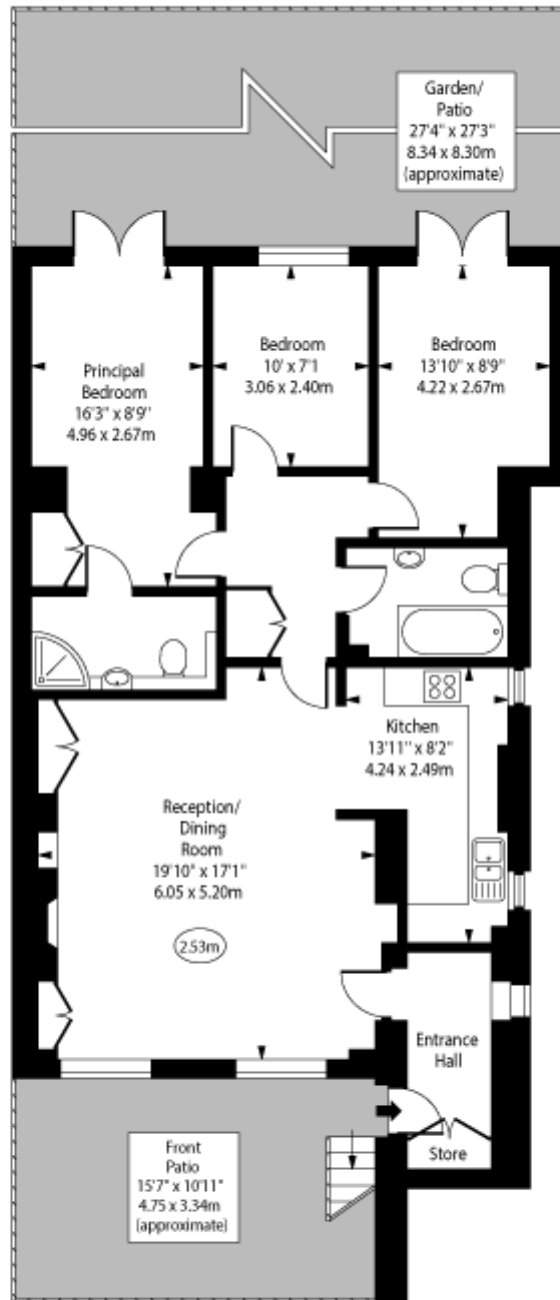
islington@chestertons.co.uk

020 7359 9777

chestertons.co.uk

Oakley Road,  
Islington, N1

○ - Ceiling Height



Lower Ground Floor

Approx Gross Internal Area 1000 Sq Ft - 92.90 Sq M

Every attempt has been made to ensure the accuracy of the floor plan shown. However, all measurements, fixtures, fittings, and data shown are approximate interpretations and for illustrative purposes only. Measured according to the RICS. Not To Scale.

[www.goldlens.co.uk](http://www.goldlens.co.uk)  
Ref. No. 031473D

