



A three-bedroom semi-detached home with single garage, offered with no onward chain. Features a spacious sitting/dining room with garden access, fitted kitchen, downstairs WC, and three bedrooms with family bathroom. Enclosed rear garden with patio and side access. NO ONWARD CHAIN.

22 Naseby Drive | Heathfield | TQ12 6SE



thoroughly good property agents



PROPERTY TYPE

Semi-Detached House



SIZE

777 sq ft



LOCATION

Heathfield



AGE

1990



BEDROOMS

3



RECEPTION ROOMS

1



BATHROOMS

1



WARMTH

Gas Central Heating



PARKING

Garage, Off Road Parking



OUTSIDE SPACE

Garden



EPC RATING

72 C



COUNCIL TAX BAND

C



in a nutshell...

- Three-bedroom semi-detached home
- Light-filled living space with garden outlook
- Fitted kitchen
- Ground floor cloakroom
- Generous principal bedroom with storage
- Family bathroom
- Private rear garden
- Single garage
- NO ONWARD CHAIN
- Heathfield



the details...

The ground floor offers a practical and well-proportioned layout, ideal for modern living. A hallway provides access to a convenient downstairs cloakroom and staircase to the first floor. To the front, there is a fitted kitchen with a range of wall and base units, ample worktop space, and room for appliances. To the rear, the spacious sitting room enjoys plenty of natural light and provides a comfortable living and dining area, with double doors opening directly onto the garden perfect for entertaining or relaxing. The ground floor also benefits from useful under-stairs storage.

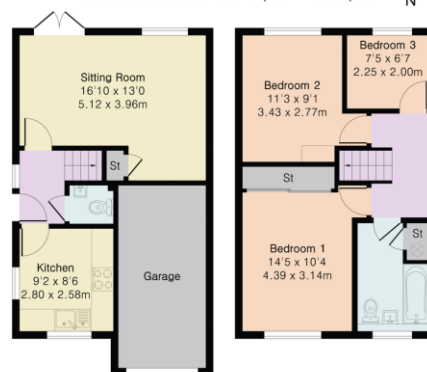
The first floor comprises three bedrooms and a family bathroom, all accessed from a central landing with useful storage. The principal bedroom is a well-proportioned double room, benefiting from fitted wardrobes. A second double bedroom provides further generous accommodation, while the third bedroom offers a versatile space ideal for a child's room, home office or nursery. The family bathroom is fitted with a three-piece suite, including a panelled bath with shower over, wash hand basin and WC.

Externally, the property benefits from a pleasant position with a small frontage and pathway leading to the entrance, alongside access to a single garage providing useful storage or parking. There is also potential to create additional off-road parking, subject to the necessary permissions. To the rear, the property enjoys an enclosed south facing garden, mainly laid to lawn with a patio area directly adjoining the house ideal for outdoor seating and entertaining. The garden is bordered by fencing, offering a good degree of privacy, and benefits from useful side access.

**Approximate Gross Internal Area 777 sq ft - 72 sq m
(Excluding Garage)**

Ground Floor Area 332 sq ft - 31 sq m

First Floor Area 445 sq ft - 41 sq m



Ground Floor

First Floor

PINK PLAN

Floor plan produced in accordance with RICS Property Measurement 2nd Edition. Although Pink Plan Ltd ensures the highest level of accuracy, measurements of doors, windows and rooms are approximate and no responsibility is taken for error, omission or misstatement. These plans are for representation purposes only and no guarantee is given on the total square footage of the property within this plan. The figure shown is for initial guidance only and should not be relied on as a basis of valuation.

complete.

The property is offered to the market with no onward chain, making it an ideal purchase for buyers seeking a straightforward move.



the location...

Heathfield is a popular location with a nearby post office, stores, school and access to the spectacular Dartmoor National Park and surrounding countryside. It also offers easy access to the A38 with links to both the cities of Plymouth and Exeter. The moorland town of Bovey Tracey is just down the road with a host of facilities, and the market town of Newton Abbot is approximately 6 miles away.

Shopping

Late night pint of milk: Spar, Battle Road 0.2 mile

Town centre: Bovey Tracey 2.7 miles

Supermarket: Lidl 1.2 miles

Newton Abbot: 3.8 miles

Exeter: 16 miles

Relaxing

Beach: Teignmouth 10.5 miles

Play Park: 0.2 mile

Stover Golf Club: 1 mile

Tennis courts, swimming pool, football: 1.5 miles

Travel

Bus stop: Battle Road 0.2 mile

Train station: Newton Abbot 4.5 miles

Main travel link: A38 0.5 mile

Airport: Exeter 18.6 miles

Schools

St Catherine's C of E Primary School: 0.1-mile

South Dartmoor Community College: 6.1 miles

Stover School (private): 1.5 miles

Please check Google maps for exact distances and travel times.

Property postcode: TQ12 6SE

how to get there...

From the A38 take the Drumbridges exit and follow the signs towards Bovey Tracey, keeping to the right-hand lane. At the traffic lights turn right into Battle Road, then first right into Musket Road and keep on this road. Carry on across the junction and take the next left hand turn into Naseby Drive, where the property can be found on the right hand side.

Need a more complete picture? Get in touch with your local branch...

Tel **01626 832 300**
Email **bovey@completeproperty.co.uk**
Web **completeproperty.co.uk**

Complete
Emlyn House
Fore Street
Bovey Tracey
TQ13 9AD

Are you selling a property too? Call us to get a set of property details like these...



Our note. For clarification we have prepared these sales particulars as a general guide and have not carried out a detailed survey nor tested the services, appliances or fittings. Room sizes should not be relied upon for carpets or furnishings. If there are any important matters which are likely to affect your decision to buy, please contact us before viewing this property. These particulars, whilst believed to be accurate, are set out as a general outline only for guidance and do not constitute any part of an offer or contract. Intending purchasers should not rely on them as statements of representation of fact, but must satisfy themselves by inspection or otherwise as to their accuracy. No person in the employment of Complete Property Services has the authority to make or give any representation or warranty in respect of the property.

SKETCH PLAN FOR ILLUSTRATIVE PURPOSES ONLY. All measurements and sizes and locations of walls, doors, window fittings and appliances are shown conventionally and are approximate only and cannot be regarded as being a representation either by the Seller or his Agent. We hope that these plans will assist you by providing you with a general impression of the layout of the accommodation. The plans are not to scale nor accurate in detail. © Unauthorised reproduction prohibited.

As part of the service we offer we may recommend ancillary services to you which we believe will help with your property transaction. We wish to make you aware that should you decide to proceed we will receive a referral fee. This could be a fee, commission, payment or other reward. We will not refer your details unless you have provided consent for us to do so. You are not under

any obligation to provide us with your consent or to use any of these services, but where you do you should be aware of the following referral fee information. You are also free to choose an alternative provider. To find out more about this, please speak to a member of the team.



selling

letting

land &
new homes

signature
homes

complete.