



Regent Court

Northbank, St John's Wood, NW8 8UN

£850 Per Week

*** Suitable for FAMILY or TWO PERSONS SHARING only - due to licensing conditions ***

A bright and well presented three double bedroom apartment situated on the FIFTH floor (with lifts) of portered building with secure allocated parking space, private balcony and in-house gym.

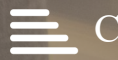
This large apartment provides a fitted kitchen, wood and tiled flooring thru-out, with private balcony.

The flat comprises of:- Wide Entrance hallway, large living room with sliding patio doors leading to a south facing balcony, semi open plan fitted kitchen with window, three double bedrooms (master with en-suite bathroom/Wc.), shower/WC. The property benefits from having: 24 hour porter, allocated parking space, gym and communal gardens. Ideally located for Regent's Park, Baker Street and St John's Wood's immense amenities. Lords' Cricket Ground is just a short walking distance. The property is offered furnished and will be available from start of JUNE.

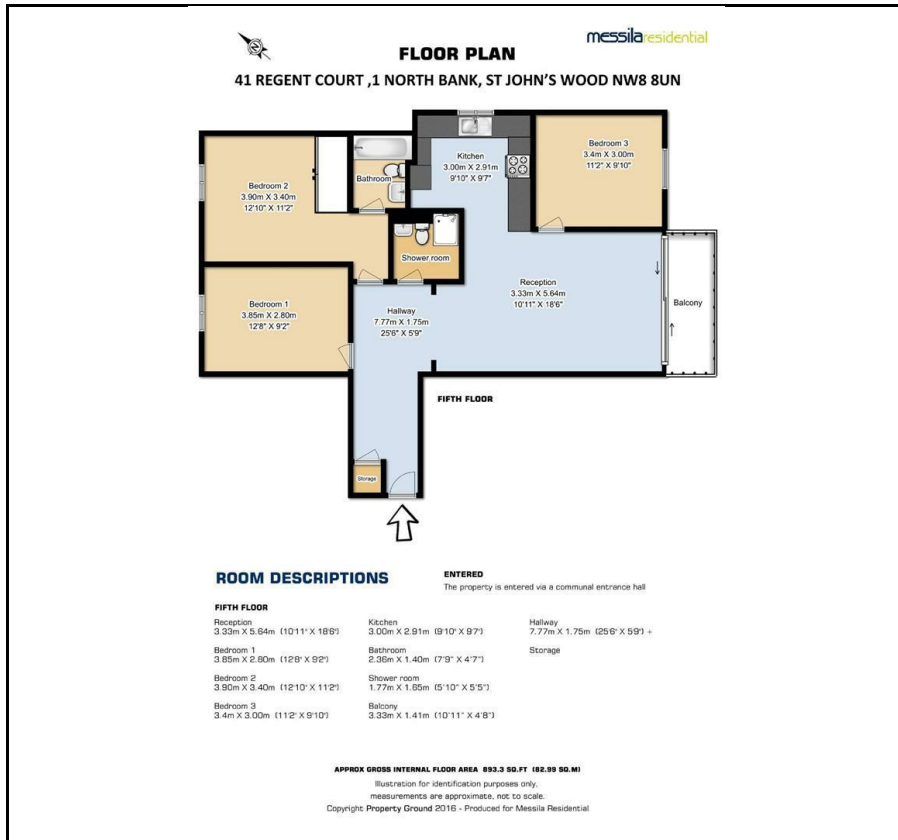
- Three Double Bedrooms
- Newly Tiled Flooring
- Private Balcony
- Private Parking
- 24 Hour Porter
- Gym
- Communal Gardens

Viewing

Please contact our Messila Residential Office on 020 7586 6699 if you wish to arrange a viewing appointment for this property or require further information.



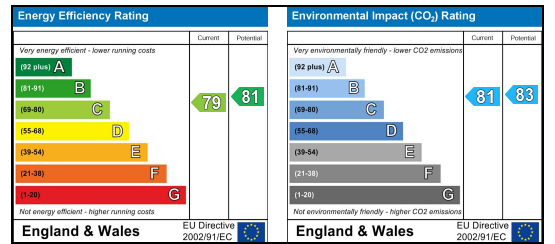
Floor Plan



Area Map



Energy Efficiency Graph



These particulars, whilst believed to be accurate are set out as a general outline only for guidance and do not constitute any part of an offer or contract. Intending purchasers should not rely on them as statements of representation of fact, but must satisfy themselves by inspection or otherwise as to their accuracy. No person in this firm's employment has the authority to make or give any representation or warranty in respect of the property.

Messila Residential

137 Park Road, London, NW8 7HT

T: 020 7586 6699 E regentspark@messilaresidential.com W: messilaresidential.com