



Hornbeam Road, Reigate

Guide Price £300,000 - £325,000





A bright, spacious ground floor apartment set within the exclusive gated development of The Belvederes, boasting peaceful communal gardens, Reigate town centre on your doorstep and no onward chain.





Guide Price £300,000 - £325,000

Set within the highly regarded gated development of The Belvederes, an exclusive collection of just 22 high quality homes, this two double bedroom ground floor apartment presents an excellent opportunity for first-time buyers, downsizers and investors alike. Built in 2007 by Charles Church, the property is positioned away from the main road and surrounded by established communal gardens, creating a peaceful setting for residents to enjoy.

The front door opens into a spacious entrance hall with substantial built-in storage, leading through to a bright, open plan kitchen/living/dining room. Large double aspect windows flood the space with natural light, while French doors open directly onto a private patio terrace. The modern kitchen features sleek white cabinetry, ample storage and integrated appliances, boasting a versatile layout ideal for both everyday living and entertaining.

There are two generously proportioned double bedrooms, including a principal bedroom with fitted wardrobes and an en-suite shower room, alongside a contemporary family bathroom.

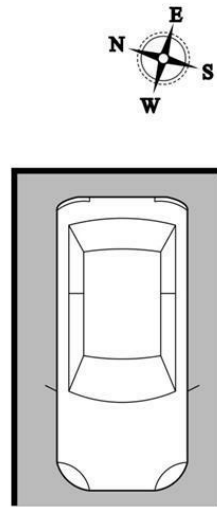
The property has been well maintained by the current owner, with a new boiler having been installed in 2025, Hive heating controls and full replacement LED downlights fitted throughout. Further benefits include an allocated parking space, visitor parking and a share of freehold.

Ideally located within walking distance of local shops, including a post office, Co-op and bakery, excellent transport links, and the ever popular Priory Park, with Reigate town centre on the doorstep, this apartment offers a straightforward purchase for buyers and is brought to the market with no onward chain.

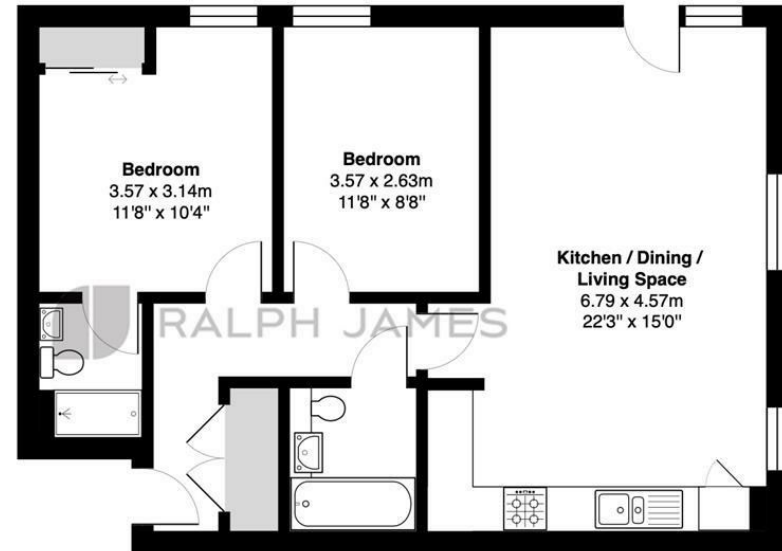


Need to know

- Modern, two double bedroom, ground floor apartment
- Large, open plan living/kitchen/dining room with French doors onto private patio
- En-suite to principal bedroom and family bathroom
- Allocated parking and share of visitors parking
- Well maintained communal gardens
- Private and gated development
- Share of Freehold
- Additional communal bike shed for storage
- Walking distance to Reigate Town Centre
- No onward chain



1x Allocated Parking Space



Ground Floor

The Belvederes, Hornbeam Road, Reigate

Total Area: 64.7 m² ... 696 ft² (excluding 1x allocated parking space)

FOR ILLUSTRATIVE PURPOSES ONLY.

Whilst every attempt has been made to ensure the accuracy of the floor plan shown, all measurements, positioning, fixtures, features, fittings and any other data shown are an approximate interpretation for illustrative purposes only and are not to scale.

No responsibility is taken for any error, omission, miss-statement or use of data shown.

The above statement applies to both 'Still Moving London LTD' and the Company or individual displaying this floor plan.

Unauthorised reproduction prohibited.

Â© Still Moving London LTD (www.stillmoving.london)



Interested?

reigate@ralphjames.co.uk
01737 333677

ralphjames.co.uk