



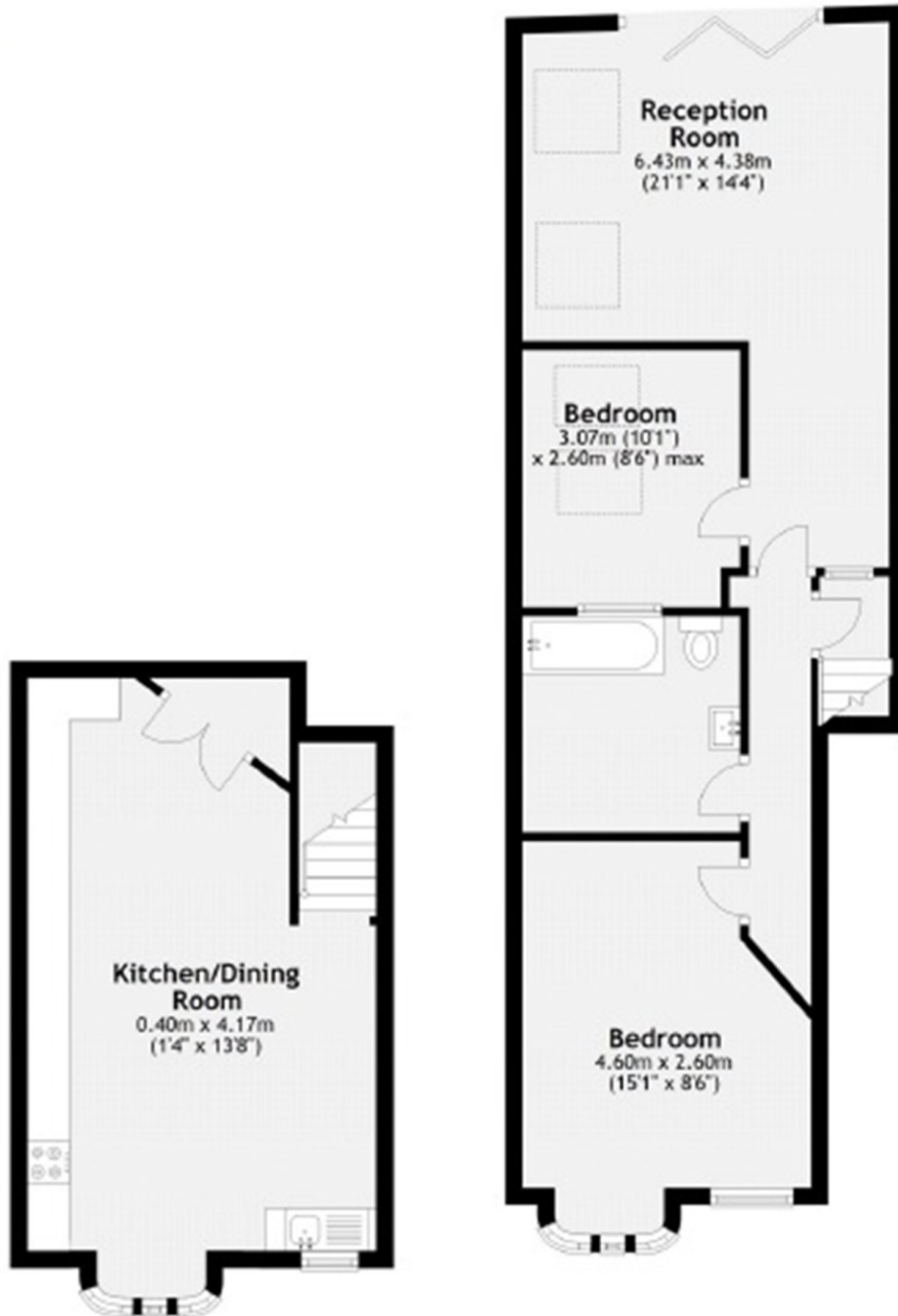
BISCAY ROAD, W6

£3,500 per week

This modern two bedroom split level apartment comprises a spacious, south facing reception room, wonderful modern kitchen with integrated appliances, a spectacular master bedroom with ample storage, second

STEP INSIDE BISCAY ROAD

7



Total area: approx. 84.4 sq. metres (908.1 sq. feet)

Bishops Park
020 7368 2480

Energy Rating: We aim to make our particulars both accurate and reliable. However, they are not guaranteed; nor do they form part of an offer or contract. If you require clarification on any points then please contact us, especially if you're traveling some distance to view. Please note that appliances and heating systems have not been tested and therefore no warranties can be given as to their good working order

**MARSH &
PARSONS**