



93, West Street, Hertford
SG13 8EZ
Guide Price £535,000



stevenoates.com



93 West Street, Hertford, Herts, SG13 8EZ

A beautifully presented character home offering stylish accommodation, a stunning landscaped garden and elevated views, all positioned within easy reach of Hertford town centre, transport links and the favoured SG13 location.

Located on the historic West Street, enjoying views across the River Lea and surrounding countryside, this charming home is perfectly positioned within a short walk of Hertford Castle, the BEAM theatre and Hertford's vibrant town centre. The property is also ideally situated for commuters, with both Hertford North and Hertford East stations providing direct links into London, whilst also benefiting from sought-after local school catchments.

This charming home blends period character with tasteful modern touches throughout. The sitting room is particularly impressive, featuring bespoke fitted shelving, a feature fireplace and large sash-style windows which draw in plenty of natural light whilst enjoying attractive views.

To the rear, the dining room provides a warm and versatile entertaining space, with direct access through to the kitchen and garden. The overall feel of the property is bright, welcoming and thoughtfully designed, whilst still retaining the charm and character expected from a home of this style.

One of the standout features is the beautifully landscaped rear garden. Arranged across several tiers, it has been carefully designed to create multiple seating and entertaining areas, surrounded by mature planting, stone pathways and established greenery. A private patio sits at the lower level, ideal for outdoor dining, whilst the upper sections lead through to a charming summer house, offering excellent potential as a home office, studio or garden retreat.

From the upper levels and rear-facing rooms, the property enjoys elevated views across surrounding greenery and beyond, creating a peaceful setting rarely found so close to town.

Early viewing is highly recommended.



70 Fore Street, Hertford, Hertfordshire, SG14 1BY



70 Fore Street, Hertford, Hertfordshire, SG14 1BY



70 Fore Street, Hertford, Hertfordshire, SG14 1BY

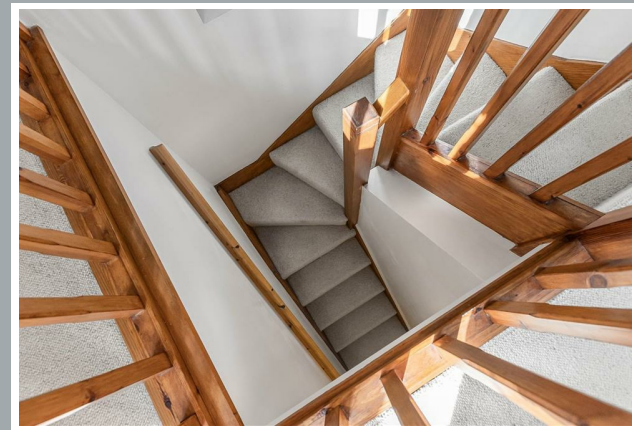
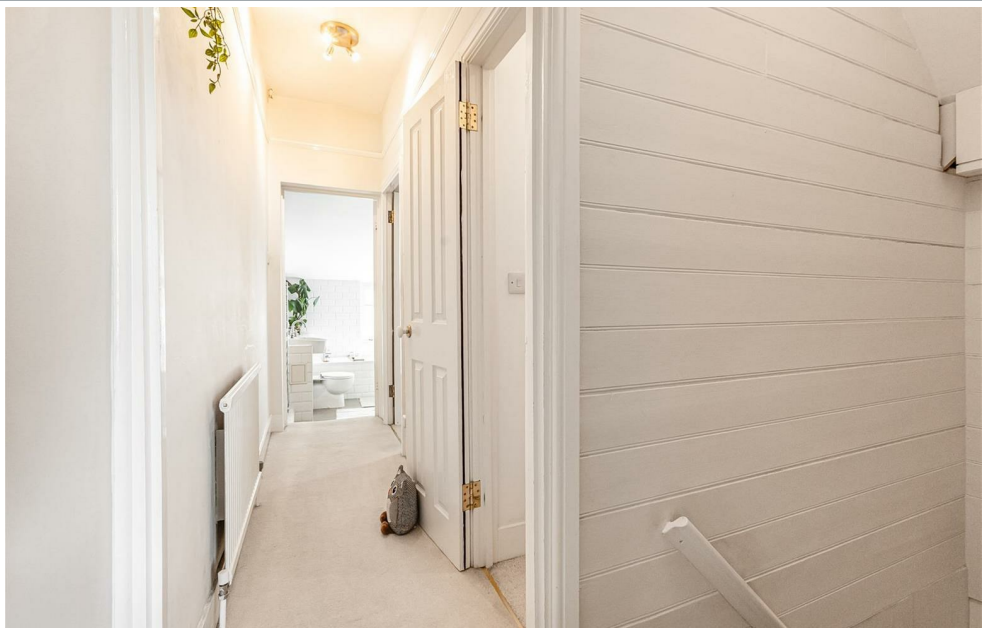




70 Fore Street, Hertford, Hertfordshire, SG14 1BY



70 Fore Street, Hertford, Hertfordshire, SG14 1BY



70 Fore Street, Hertford, Hertfordshire, SG14 1BY



70 Fore Street, Hertford, Hertfordshire, SG14 1BY

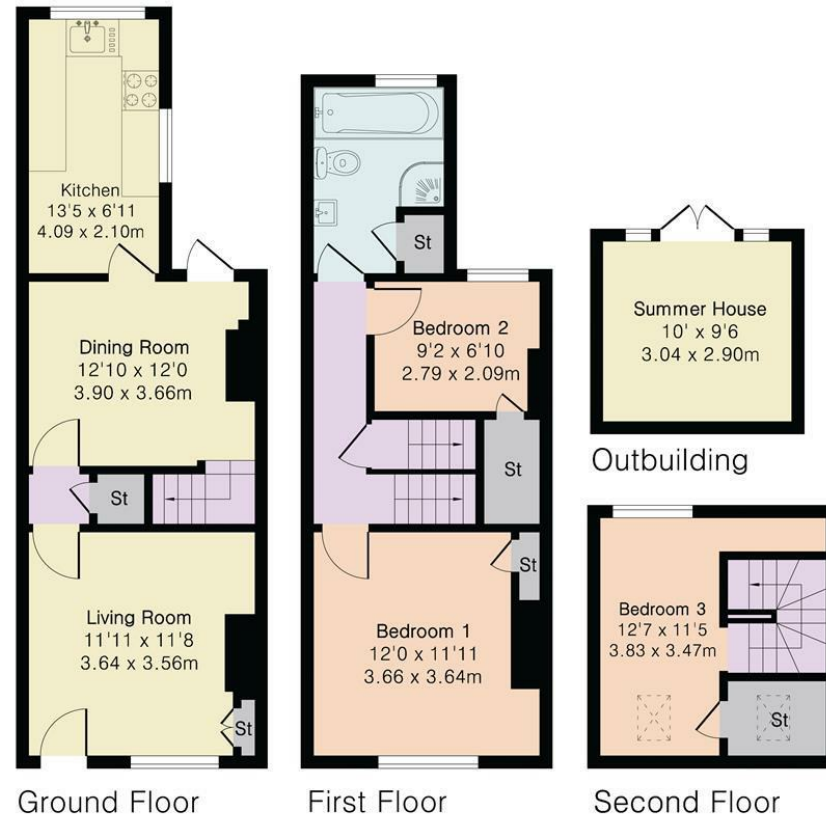
**Approximate Gross Internal Area 914 sq ft - 85 sq m
(Excluding Outbuilding)**

Ground Floor Area 394 sq ft – 37 sq m

First Floor Area 370 sq ft – 34 sq m

Second Floor Area 150 sq ft – 14 sq m

Outbuilding Area 95 sq ft – 9 sq m



These particulars, whilst believed to be accurate are set out as a general outline only for guidance and do not constitute any part of an offer or contract. Intending purchasers should not rely on them as statements of representation of fact, but must satisfy themselves by inspection or otherwise as to their accuracy. No person in this firm's employment has the authority to make or give any representation or warranty in respect of the property.



stevenoates.com