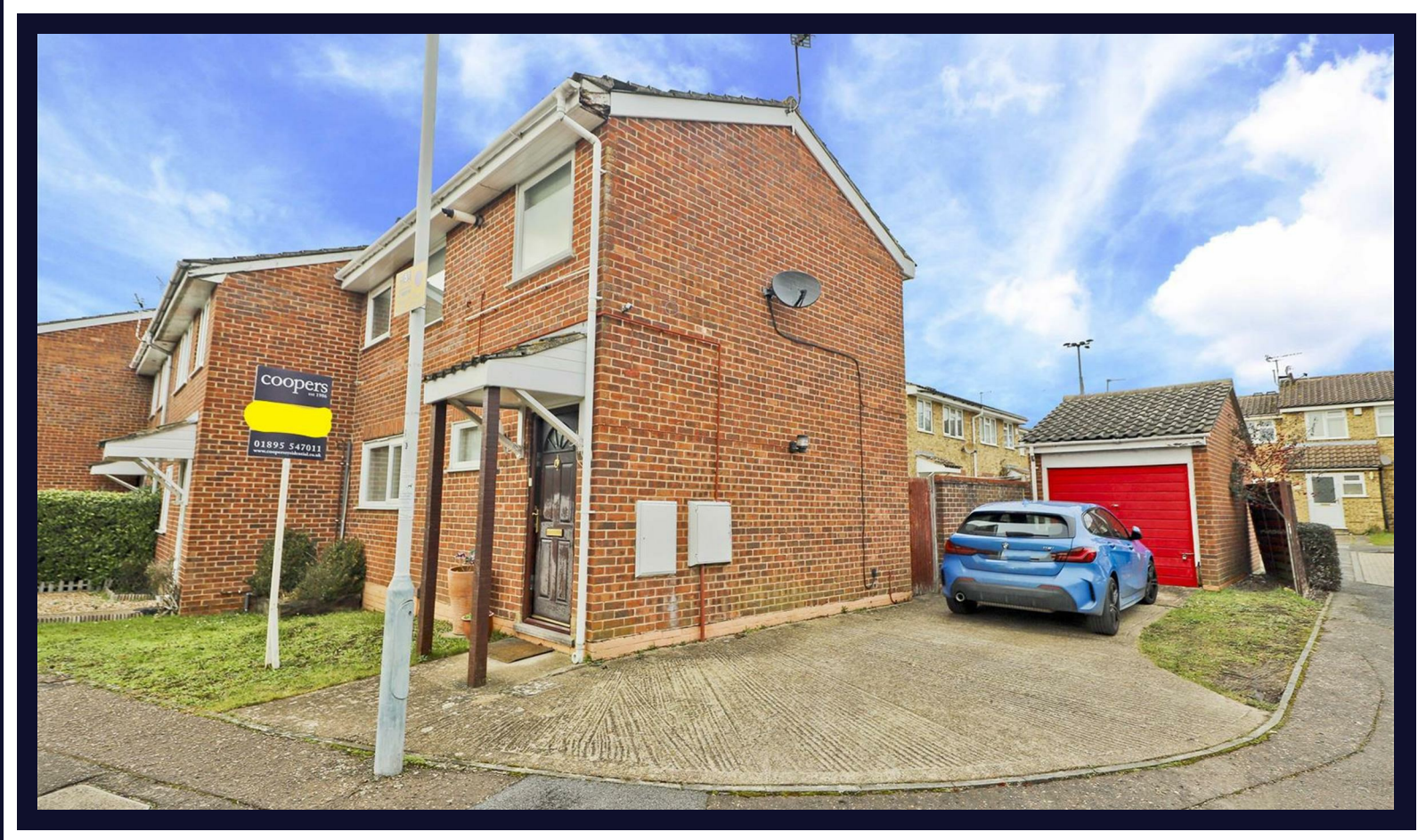


Aylsham Drive

Ickenham • Middlesex • UB10 8UG

PCM: £2,200 PCM



coopers
est 1986



Set in the ever popular Brackenbury village, Coopers are delighted to offer to the market this well presented three bedroom end of terraced family home. With good access to West Ruislip Station (Central line), Ickenham Station (Metropolitan/Piccadilly lines) and for the motorists A40/M25 links. This property also has the benefit of being within touching distance of all the local shops, restaurants and amenities nearby.

End of terrace

Three bedrooms

Ample off street parking

Unfurnished

Modern interior

Fitted kitchen

Close to local amenities

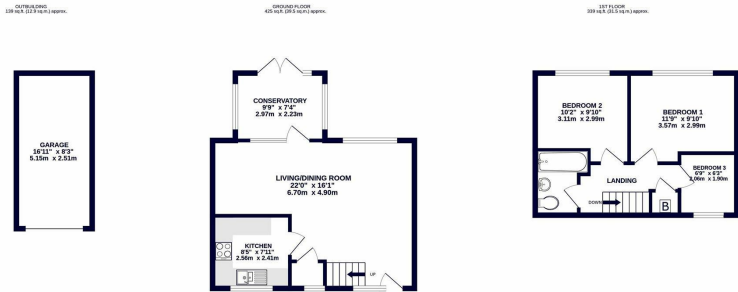
Close to sought after schools

Nearby train links

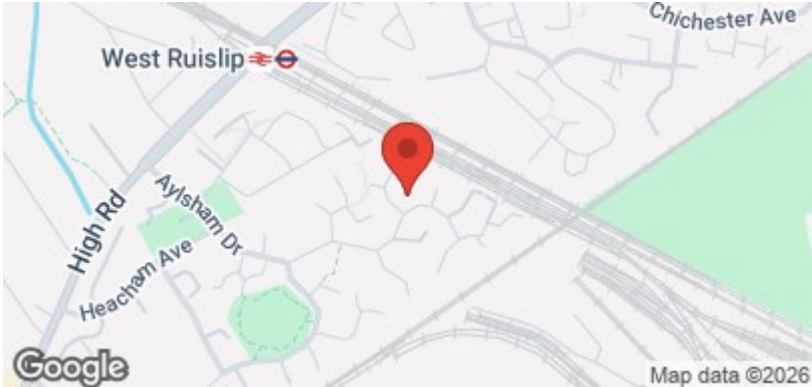
Close to A40/M40/M25

Available Date

29th March 2026



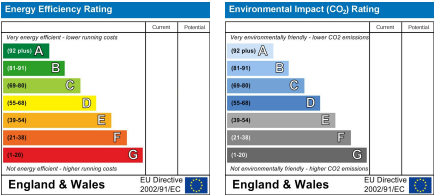
TOTAL FLOOR AREA: 903 sq ft (83.9 sq m) approx.
Whilst every attempt has been made to ensure the accuracy of the floorplan, Coopers Residential, measurements of doors, windows, rooms and any other items are approximate and no responsibility is taken for any error, omission or misstatement. This plan is for guidance purposes only and should be used in conjunction with a prospective purchaser. The services, systems and appliances shown have not been tested and no guarantee as to their operability or efficiency can be given.
Made with floorplan 2022



coopers
est 1986

01895 625 625
126-128 High Street, Ruislip,
Middlesex, HA4 8LL
rl@coopersresidential.co.uk

CoopersResidential.co.uk



Important Notice: These particulars, whilst believed to be accurate are set out as a general outline only for guidance and do not constitute any part of an offer or contract. Intending purchasers should not rely on them as statements or representation of fact, but must satisfy themselves by inspection or otherwise has the authority to make or give any representation or warranty in respect of the property.