

**Reddish Vale Road, Stockport, SK5 7HB**

Offers Over £260,000



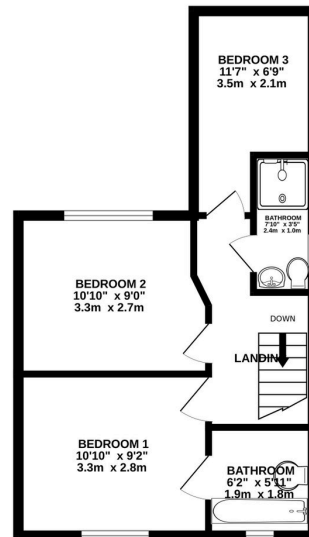
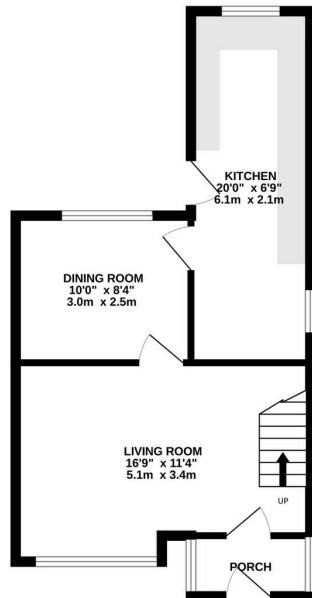
- 3 Bed Semi Detached Home
- Gas Central Heating - Recent New Boiler - Glow Worm Serviced
- Off Road Parking for Three Vehicles
- Fitted Kitchen with in built fridge & freezer.
- Private Garden
- Located Near Reddish Vale Country Park
- New Double Glazed Windows throughout fitted to FENSA standards
- External Garage / Storage room
- En Suite Bathroom
- Boarded Loft space for additional storage with Access ladders.



GROUND FLOOR  
419 sq.ft. (38.9 sq.m.) approx.



1ST FLOOR  
383 sq.ft. (35.6 sq.m.) approx.



TOTAL FLOOR AREA: 802 sq.ft. (74.5 sq.m.) approx.  
Whilst every attempt has been made to ensure the accuracy of the floorplan contained herein, measurements of doors, windows, rooms and any other items are approximate and no responsibility is taken for any error, omission or mis-statement. This plan is for illustrative purposes only and should be used as such by any prospective purchaser. The services, systems and appliances shown have not been tested and no guarantee as to their operability or efficiency can be given.  
Made with Metropix ©2025

PM1257

A beautifully finished and superbly positioned three-bedroom semi-detached house on Reddish Vale Road within minutes of the entry of Reddish Vale Country Park.

This home has been thoughtfully decorated and enhanced to create stylish, versatile family accommodation finished to an impressive standard throughout.

The property is set back from the road with a smart, low maintenance frontage providing off road parking for three vehicles and a welcoming entrance porch. Upon entering, you are

PAUL MOSS

exp<sup>®</sup> UK

@ paul.moss@exp.uk.com

🌐 paulmoss.exp.uk.com

📞 07714 089 046

immediately struck by the quality of finish and contemporary design that runs consistently throughout the home.