



Charlotte Drive, Gosport, PO12 4GS

welcome to

Charlotte Drive, Gosport

-- Six Bedroom Detached Family Home -- Open Plan Kitchen / Dining Room -- Four Bathrooms Plus WC -- Ample Off Street Parking -- Sought After Location -- Close to Waterfront, Shops, Parks & Amenities -- Enclosed Rear Garden -- No Onward Chain --

Hallway

Lounge

26' 6" max x 10' 9" max (8.08m max x 3.28m max)

Kitchen / Diner

25' 7" max x 14' 10" max (7.80m max x 4.52m max)

Conservatory

11' 8" max x 10' max (3.56m max x 3.05m max)

W C

On The First Floor

Bedroom 1

15' 9" max x 10' 11" max (4.80m max x 3.33m max)

En-Suite

Bedroom 2

11' max x 10' 6" max (3.35m max x 3.20m max)

En-Suite

Bedroom 5

8' 8" max x 8' max (2.64m max x 2.44m max)

Bedroom 6

9' 4" max x 8' 6" max (2.84m max x 2.59m max)

Bathroom

On The Second Floor

Bedroom 3

18' 10" max x 11' 4" max (5.74m max x 3.45m max)

Bedroom 4

18' 11" max x 10' 11" max (5.77m max x 3.33m max)

Shower Room

Enclosed Rear Garden

Driveway Parking





view this property online fox-and-sons.co.uk/Property/GOS113629



welcome to

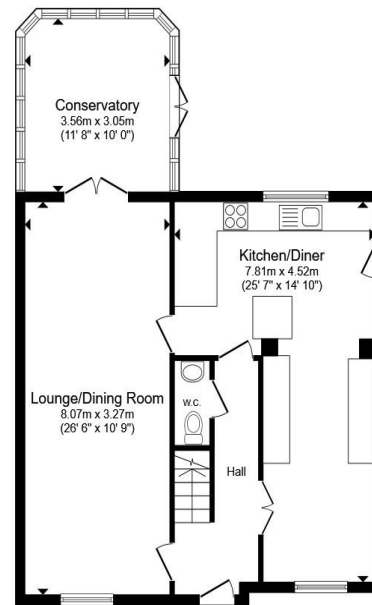
Charlotte Drive, Gosport

- Guide Price £595,000 to £625,000
- Six Bedroom Detached Family Home
- Open Plan Kitchen / Dining Room
- Four Bathrooms Plus WC
- Ample Off Street Parking

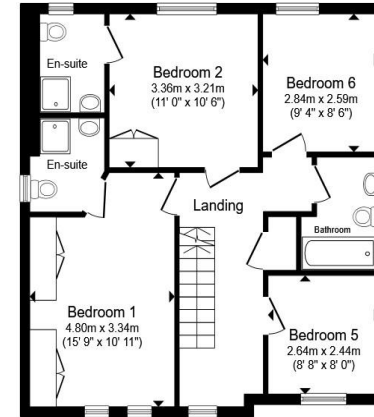
Tenure: Freehold EPC Rating: C
Council Tax Band: F

guide price

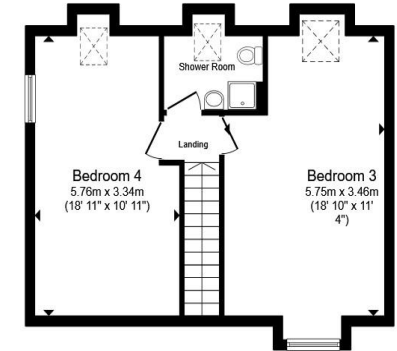
£595,000



Ground Floor



First Floor



Second Floor

Total floor area 185.1 m² (1,992 sq.ft.) approx

This floor plan is for illustrative purposes only. It is not drawn to scale. Any measurements, floor areas (including any total floor area), openings and orientation are approximate. No details are guaranteed, they cannot be relied upon for any purpose and they do not form part of any agreement. No liability is taken for any error, omission or misstatement. A party must rely upon its own inspection(s). Powered by www.propertybox.io



view this property online fox-and-sons.co.uk/Property/GOS113629



Property Ref:
GOS113629 - 0002

1. MONEY LAUNDERING REGULATIONS Intending purchasers will be asked to produce identification documentation at a later stage and we would ask for your co-operation in order that there is no delay in agreeing the sale. 2. These particulars do not constitute part or all of an offer or contract. 3. The measurements indicated are supplied for guidance only and as such must be considered incorrect. Potential buyers are advised to recheck measurements before committing to any expense. 4. We have not tested any apparatus, equipment, fixtures or services and it is in the buyers interest to check the working condition of any appliances. 5. Where an EPC, or a Home Report (Scotland only) is held for this property, it is available for inspection at the branch by appointment. If you require a printed version of a Home Report, you will need to pay a reasonable production charge reflecting printing and other costs. 6. We are not able to offer an opinion either written or verbal on the content of these reports and this must be obtained from your legal representative. 7. Whilst we take care in preparing these reports, a buyer should ensure that his/her legal representative confirms as soon as possible all matters relating to title including the extent and boundaries of the property and other important matters before exchange of contracts.



023 9250 3733



Gosport@fox-and-sons.co.uk



10 High Street, GOSPORT, Hampshire, PO12
1BX



fox-and-sons.co.uk