



East Walk, EN4

Barnet

£800,000

This attractive semi-detached 1930s Art Deco five-bedroom family home retains much of its original charm and character and offers comfortable accommodation across three floors with private front and rear gardens. Situated on East Walk, a peaceful and idyllic location overlooking the Pymmes Brook, it is a wonderfully quiet setting that is particularly appealing to families and nature lovers. There are several renowned primary and secondary schools located close by, as well as numerous parks and green spaces to be enjoyed.

The welcoming hallway leads to a front reception room and a rear reception room with doors opening directly onto the garden. Separate from this is the kitchen, which also has its own door to the garden, making it practical for family life. On the first floor, there are two double bedrooms, a single room (currently used as a study), and a family bathroom. The loft conversion provides two further bedrooms and a shower room, giving excellent flexible space for a growing family or guests.

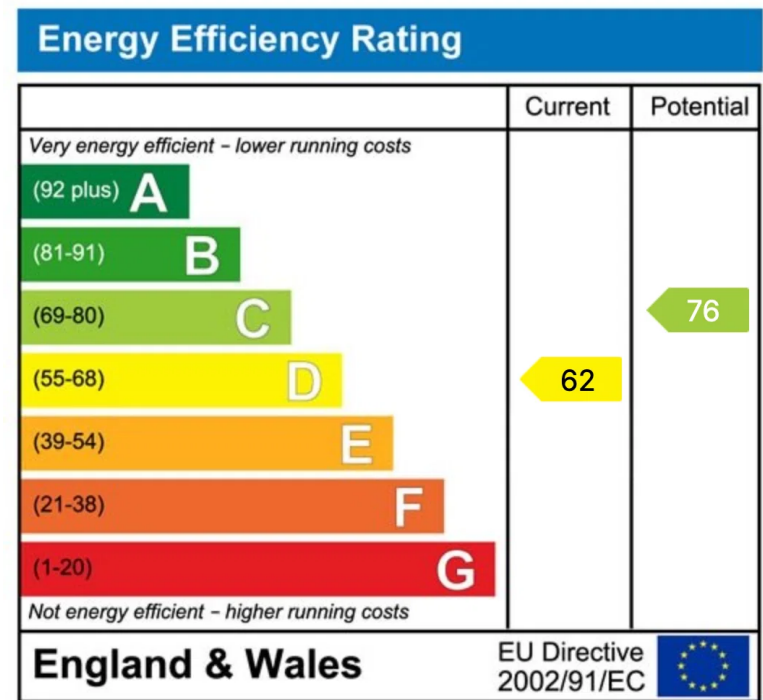
Outside, the front garden is laid to lawn with established shrubs, while the rear, private garden has a patio area, large lawn and benefits from a useful side entrance.

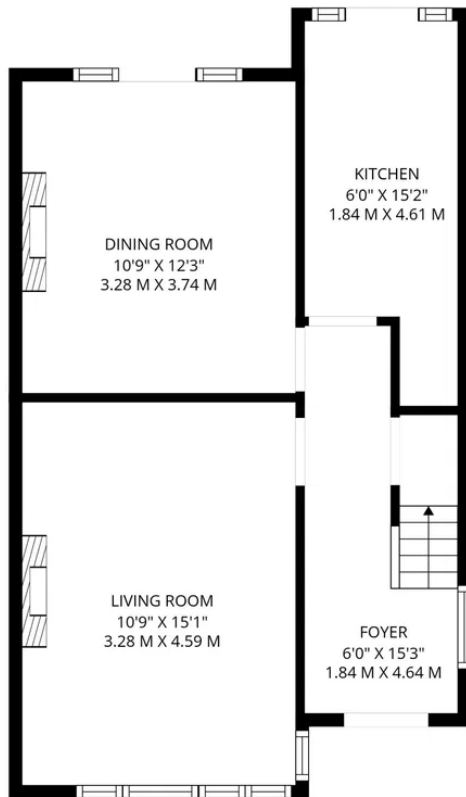
The location is idyllic. East Walk enjoys a peaceful setting overlooking Pymmes Brook. The property is literally surrounded by green spaces, with Arnos Grove Park, Oak Hill Park and Brunswick Park all within easy reach. There are many popular schools within easy reach, and the area benefits from many convenient transport links.

A solid and characterful 1930s Art Deco family home in a wonderful green location – early viewing is highly recommended.

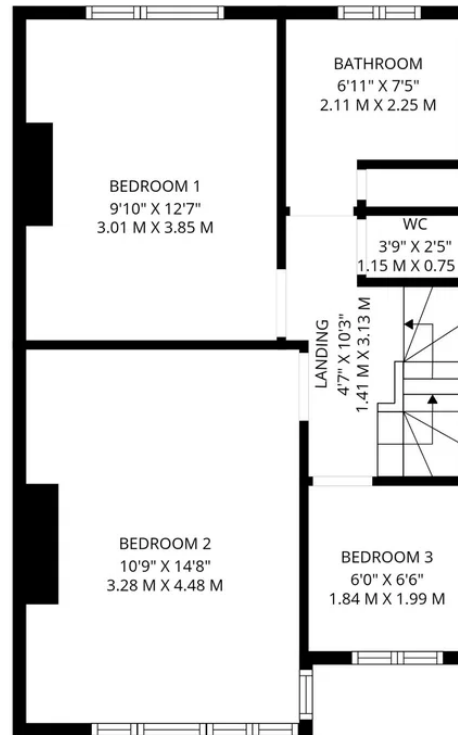
Please Quote Ref: AW1324



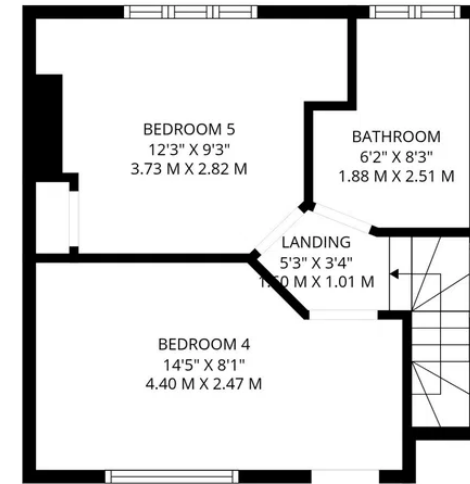




GROUND FLOOR



1ST FLOOR



2ND FLOOR

Total: 1185 sq. Ft, 110 m2
 Ground Floor: 470 sq. Ft, 44 M2, 1st Floor: 455 sq. Ft, 42 M2, 2nd Floor: 260 sq. Ft, 24 m2
 Excluded Areas: Low Ceiling: 38 sq. Ft, 4 M2, Walls: 129 sq. Ft, 12 m2

FLOOR PLAN CREATED BY CUBICASA APP. MEASUREMENTS DEEMED HIGHLY RELIABLE BUT NOT GUARANTEED.



07817 598 309
 amanda.walker@exp.uk.com
 https://amandawalker.exp.uk.com