



STRATHBROOK ROAD, SW16

£825,000

- Modernised terrace family home
- High-spec rear extension
- Three bedrooms
- Large private garden
- Off street parking
- Energy rating: D





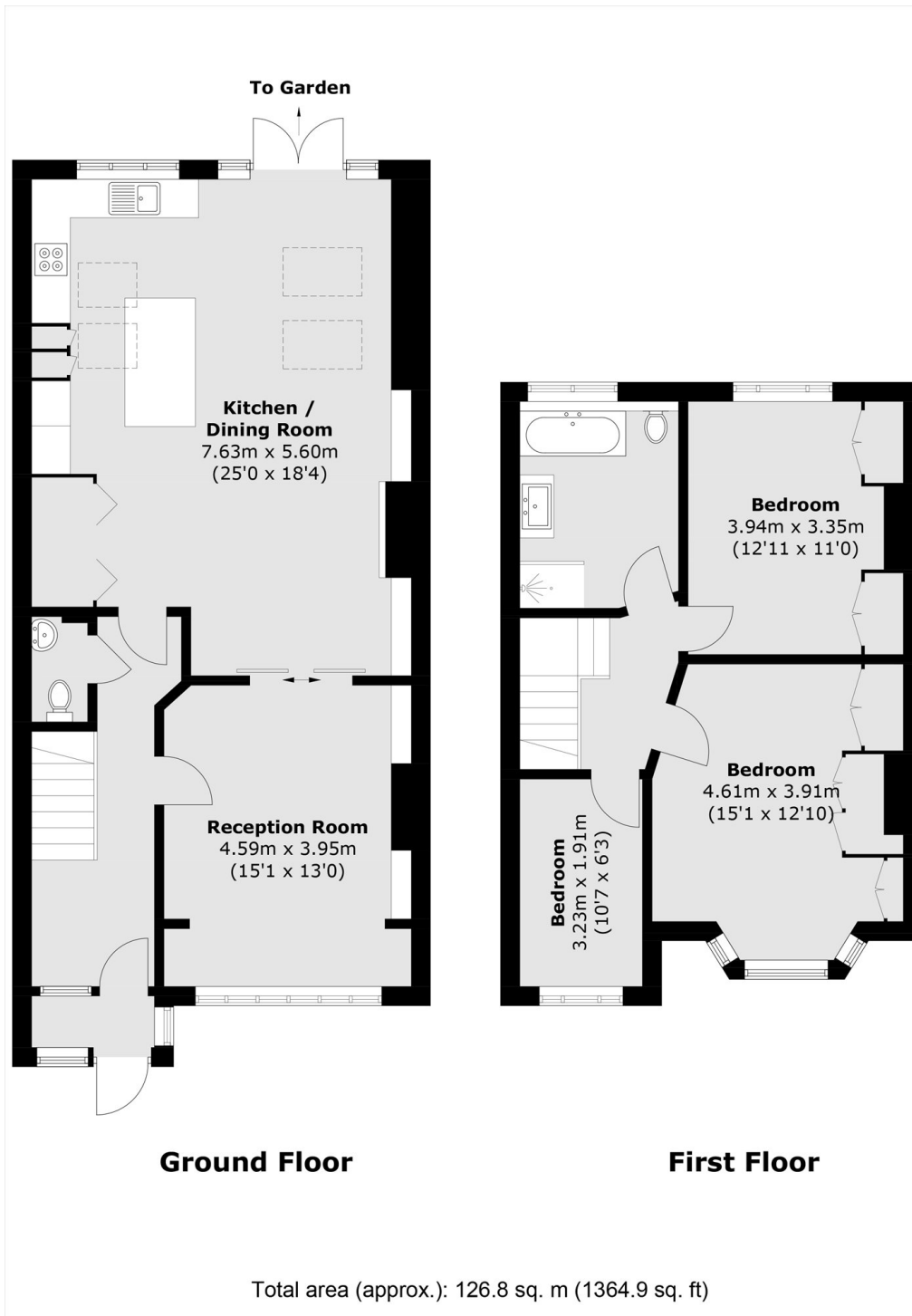
ABOUT THE HOME

A high spec, terrace family home located close to Streatham Common with an impressive rear kitchen extension, landscaped garden and private off street parking.

Strathbrook Road is located a short distance from Streatham and The Rookery. Residents have the benefit of access to a number of local amenities on both Streatham High Road and Norbury High Street. There are also good transport links available including the Southern via Streatham Common Station, the Thameslink via Streatham and a number of regular bus links into the City via Brixton.





**JACKSONS STREATHAM**

1-3 De Montfort Parade,
Streatham High Road,
Sales: 020 8487 3179
Lettings: 020 8487 3180

Energy Rating: D We aim to make our particulars both accurate and reliable. However they are not guaranteed; nor do they form part of an offer or contract. If you require clarification on any points then please contact us, especially if you're traveling some distance to view. Please note that appliances and heating systems have not been tested and therefore no warranties can be given as to their good working order.