



Stone Close, Corsham

£350,000

🛏️ 4 🚿 2 🚿 1

- Surprisingly spacious 4 bedroom home
- Downstairs WC, Ensuite to main bedroom and top floor bathroom
- First floor living room with Juliet balcony
- 2 excellent doubles and a generous single bedroom on the 2nd floor
- Integral garage and driveway
- Beautiful Kitchen/Dining room opening onto the garden
- Sunny West facing garden backing onto green spaces
- Main bedroom with 2 double built in wardrobes and en suite
- Bath side of Corsham with bus routes close by
- NO ONWARD CHAIN!



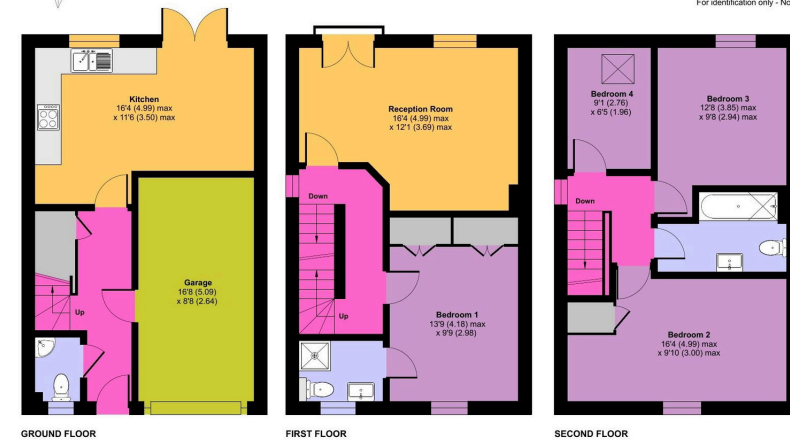
A surprisingly spacious 4 bedroom family home set over 3 floors offering flexible accommodation. Downstairs features a generous kitchen/diner with French doors out on to a private garden with the middle floor offering a living room with Juliet balcony and views over the garden and fields behind. Also on the middle floor is the principal bedroom, complete with 2 double built in wardrobes and an en suite shower room. The top floor has 3 generous bedrooms and the main bathroom. A great location, outlook and comes with NO ONWARD CHAIN!



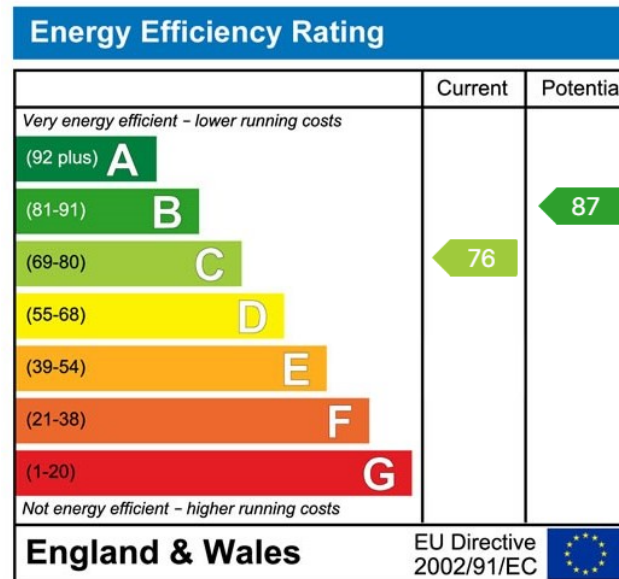


Stone Close, Corsham, SN13

Approximate Area = 1138 sq ft / 105.7 sq m
 Garage = 145 sq ft / 13.4 sq m
 Total = 1283 sq ft / 119.1 sq m
 For identification only - Not to scale



Floor plan produced in accordance with RICS Property Measurement 2nd Edition, incorporating International Property Measurement Standards (IPMS2 Residential). © richreem 2020. Produced for: Jane Whitfield Property Services. REF: 140959



01225 705650

hello@jainewhitfield.co.uk

www.jainewhitfield.co.uk

