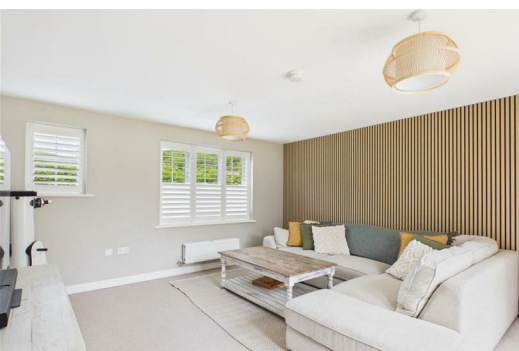




# Olive

ESTATE AGENTS

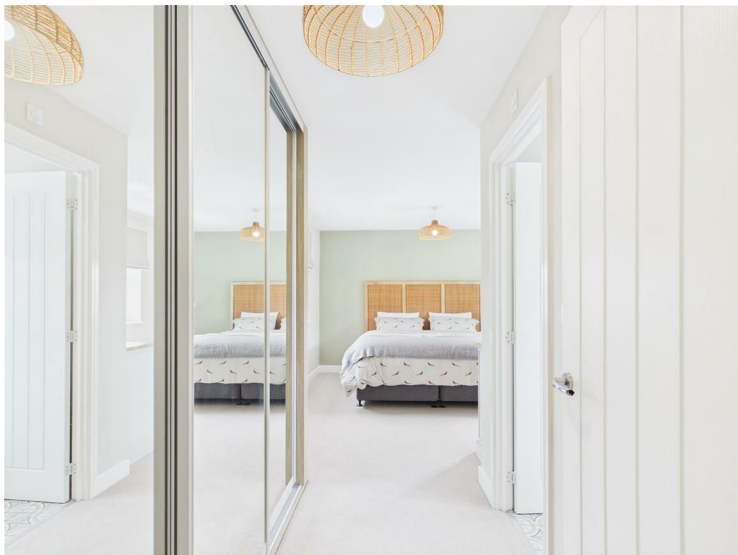


## 6 Drop Court, Cheddar, BS27 3EQ £560,000

\*\*\* STUNNING 4 BEDROOM DETACHED HOME \*\*\* BEAUTIFULLY PRESENTED \*\*\* AMAZING VIEWS TO THE FRONT OF THE HOUSE, TOWARDS THE MENDIPS \*\*\* 4 DOUBLE BEDROOMS \*\*\* SOUTH FACING GARDEN  
\*\*\*\* LIVING ROOM \*\*\* SECOND LIVING/SNUG \*\*\* LOVELY KITCHEN DINER \*\*\* EN-SUITE TO THE MAIN BEDROOM \*\*\* DOWNSTAIRS WC/UTILITY ROOM \*\*\* SINGLE GARAGE \*\*\* OFF STREET PARKING \*\*\* EPC B  
\*\*\* COUNCIL TAX F \*\*\* FREEHOLD \*\*\*













Floor 0 Building 1



Floor 1 Building 1

Approximate total area<sup>(1)</sup>  
1416 ft<sup>2</sup>  
Reduced headroom  
10 ft<sup>2</sup>

(1) Excluding balconies and terraces

Reduced headroom  
..... Below 5 ft

Calculations reference the RICS IPMS 3C standard. Measurements are approximate and not to scale. This floor plan is intended for illustration only.

GIRAFFE360

