



Price
£290,000

Leasehold

2x  2x  1x 

**Bedivere Road, Crawley,
West Sussex, RH11**

OVER 60?

Secure this property
for up to **59% less!**

cubitt&west
Helping you move forwards



Main features

- Purpose built ground floor apartment with private entrance
- Two allocated parking spaces
- En suite shower room and bathroom
- Open plan living with large lounge/diner and kitchen with integrated appliances
- Short walk to local shops, schools and Ifield Railway station

Accommodation

GROUND FLOOR

Entrance Hall

Lounge/Kitchen/Diner: 23'6 (7.17m) x 20'2 (6.15m) narrowing to 19'8 (6.00m)

Inner Hallway

Bedroom 1: 14'8 x 9'1 (4.47m x 2.77m)

En Suite Shower Room: 8'9 x 3'11 (2.67m x 1.19m)

Bedroom 2: 13'1 x 10'1 (3.99m x 3.08m)

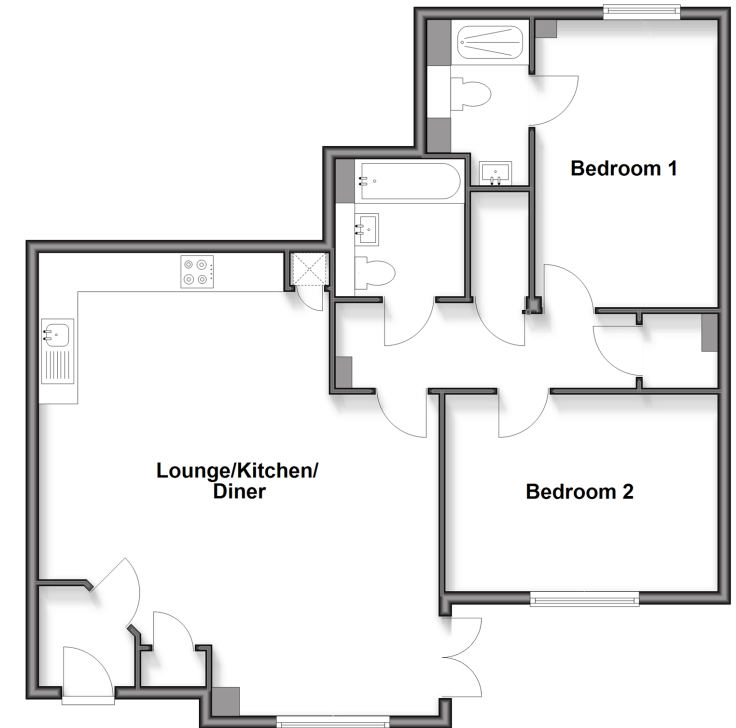
Bathroom: 7'0 x 5'7 (2.14m x 1.70m)

OUTSIDE

Communal Garden

Two allocated parking spaces

Ground Floor
Approx. 83.0 sq. metres (893.3 sq. feet)



Call Crawley - 01293 522233 ■ cubittandwest.co.uk

- Legal advice should be taken to verify fixtures/fittings, planning, alterations and/or lease details
- Appliances & services are untested, dimensions are approximate and floor plans are not to scale
- Through a Homewise Home For Life Plan people aged 60+ can secure this property for up to 50% less, by purchasing a Lifetime Lease.



20420408/20250813/SS/DC