



## Hillary Drive, TW7

£1,750 Per calendar month

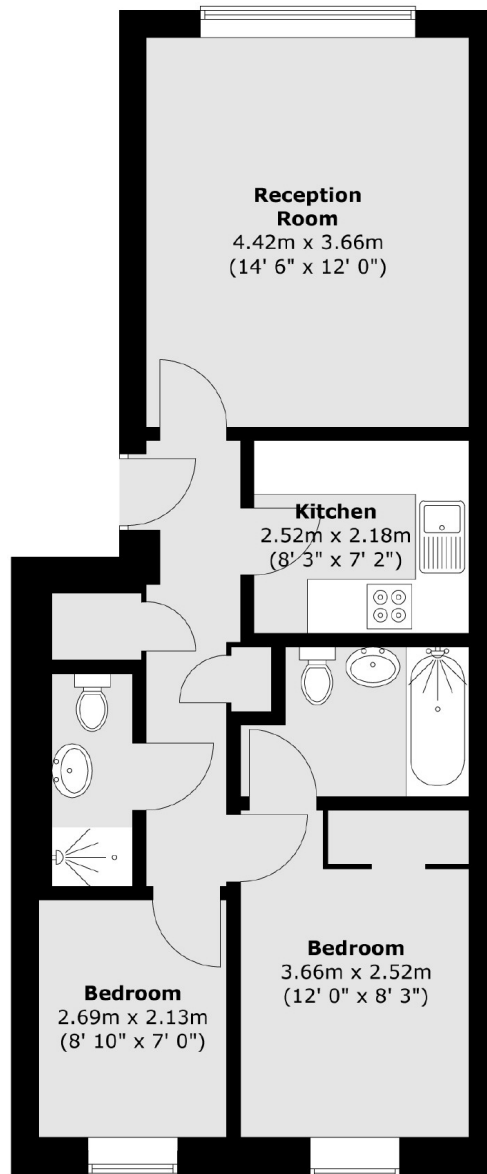
A spacious two bedroom top floor apartment situated just over half a mile from St Margaret's Station and shops. The property comprises one double bedroom and a good sized single, master bedroom with en-suite, separate fitted kitchen, spacious lounge and an additional shower room. The property further benefits from allocated parking.

Hillary Drive is set within a gated development, within a short distance from Twickenham mainline station and close to local transport and amenities.

### Features

- Two Bedrooms
- Built In Storage
- Large Reception Room
- Two Bathrooms
- Gated Development
- Close To Transport

# Hillary Drive, Isleworth, TW7



Total area (approx.) : 53.3 sq. m (574 sq. ft)