



Guide Price
£500,000

Freehold

3x  2x  2x 

**Grove Road, Chadwell
Heath, Essex, RM6**

OVER 60?

Secure this property
for up to **59% less!**

 **DOUGLAS
ALLEN**
Helping you move forwards



Main features

- Well presented terraced house with entrance porch
- Off street parking & garage
- Ground floor wet room & first floor bathroom
- Large rear garden
- Walking distance to shops & places of worship

Accommodation

GROUND FLOOR

Entrance Porch
 Entrance Hall
 Lounge : 12'5 x 12'0 (3.79m x 3.66m)
 Dining Area: 11'0 x 10'9 (3.36m x 3.28m)
 Kitchen/Breakfast Area: 16'0 x 9'9 (4.88m x 2.97m)
 Shower Room

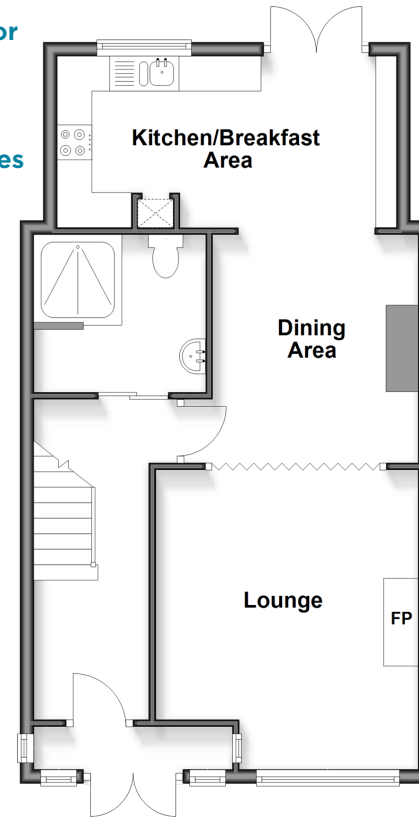
FIRST FLOOR

Landing
 Bedroom 1: 11'5 x 11'1 (3.48m x 3.38m)
 Bedroom 2: 11'5 x 11'1 (3.48m x 3.38m)
 Bedroom 3: 7'8 x 7'1 (2.34m x 2.16m)
 Bathroom

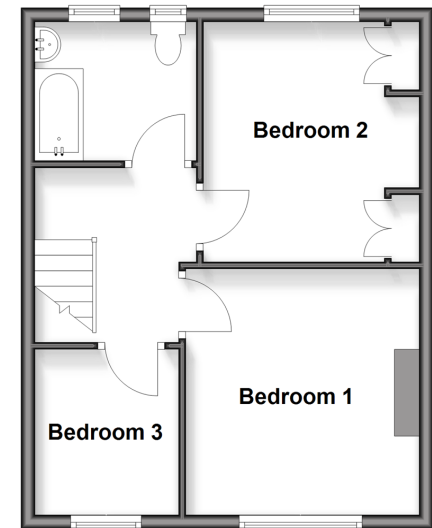
OUTSIDE

Off Street Parking
 Garage

Ground Floor
 Approx. 54.8 sq. metres (590.3 sq. feet)



First Floor
 Approx. 39.1 sq. metres (420.7 sq. feet)



Unable to display material information. Please check with the branch for material information details for this property



50714260/20260425/CN/MH