



Lansdowne Street, Hove, BN3 1FQ

Guide Price £325,000-£350,000

Lansdowne Street, Hove, BN3 1FQ

Spacious two-bedroom first-floor apartment in Hove. Open-plan living, modern kitchen, and easy access to Hove Station and the seafront.

Positioned in the heart of Hove, this first-floor apartment on Lansdowne Street offers a superb opportunity for those seeking stylish and convenient city living. Located within a charming period building, this property perfectly blends modern interiors with classic architectural features, making it an ideal choice for professionals, couples, or investors looking for a home in a sought-after area.

The apartment boasts an open-plan living space designed to maximise comfort and practicality. The lounge area is bright and welcoming, featuring large sash windows that invite an abundance of natural light while providing a pleasant aspect over the surrounding area. The modern kitchen is fitted with a range of sleek units, integrated appliances, and ample worktop space, perfect for those who enjoy cooking or entertaining.

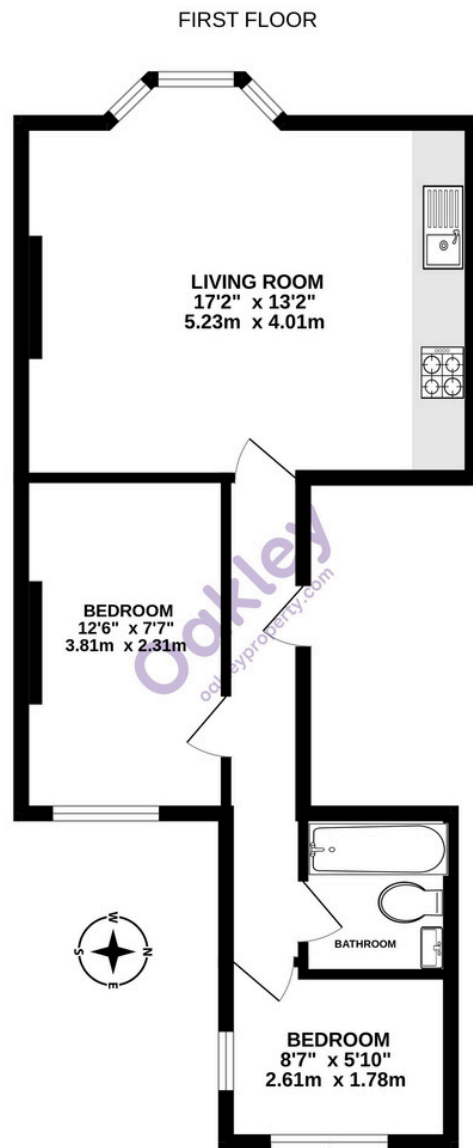
There are two well-proportioned double bedrooms, both thoughtfully laid out to accommodate a variety of furniture arrangements. These rooms provide comfortable spaces for relaxation, with space for storage options. The stylish bathroom is fitted with a modern suite, including a bath with overhead shower, a washbasin, and a low-level WC, all finished to a high standard.

This property's enviable location adds to its appeal. Situated in Central Hove, residents are within walking distance of an array of local amenities, including boutique shops, cafes, and restaurants. The vibrant seafront is also just a short stroll away, offering the perfect spot for weekend walks, cycling, or simply soaking up the coastal lifestyle. For those requiring excellent transport links, Hove Station is conveniently close, providing direct services to London and destinations along the south coast.

Additional benefits of this apartment include its period charm, high ceilings and a share on the freehold company. With its combination of location, modern interiors, and proximity to essential facilities, this property is a true gem in the Hove property market.

Whether you are looking to downsize, purchase your first home, or invest in a rental property, this two-bedroom apartment on Lansdowne Street is a fantastic option.





TOTAL FLOOR AREA : 484sq.ft. (45.0 sq.m.) approx.
Made with Metropix ©2025

Agents Notes
Tenure Leasehold
88 Years Remaining On The Lease
Service Charge Approx £1,272 Per Annum
Ground Rent N/A
Council Tax Band B

Energy Performance Certificate

Score	Energy rating	Current	Potential
92+	A		
81-91	B		
69-80	C	73 C	78 C
55-68	D		
39-54	E		
21-38	F		
1-20	G		



Please note:

These details have been produced in good faith and are believed to be accurate based upon the information supplied but they are not intended to form part of a contract. All statements contained in these particulars as to this property are made without responsibility on the part of Oakley, the vendors or lessors and are NOT to be relied on as statements or representations of fact. Any intending purchasers must satisfy themselves by inspection or otherwise as to the correctness of each of the statements contained in these particulars. The vendors, Oakley and any person who work in their employment do not have any authority to make or give any representation or warranty. The floor plan is for illustrative purposes only and the accuracy cannot be relied upon or guaranteed and no responsibility is taken for an error, omission or mis-statement. The total floor area shown has been taken from the EPC.



Oakley

Your Sussex Property Expert

Brighton & Hove Office
01273 688 881
30-31 Foundry Street, Brighton BN1 4AT
www.oakleyproperty.com
sales@oakleyproperty.com

We also have offices in:
Shoreham by Sea
Lewes Town & Country



A new way of marketing property

Get in touch to book a viewing or valuation of your own property

