



## Stonestile Lane, Hastings TN35 4PG

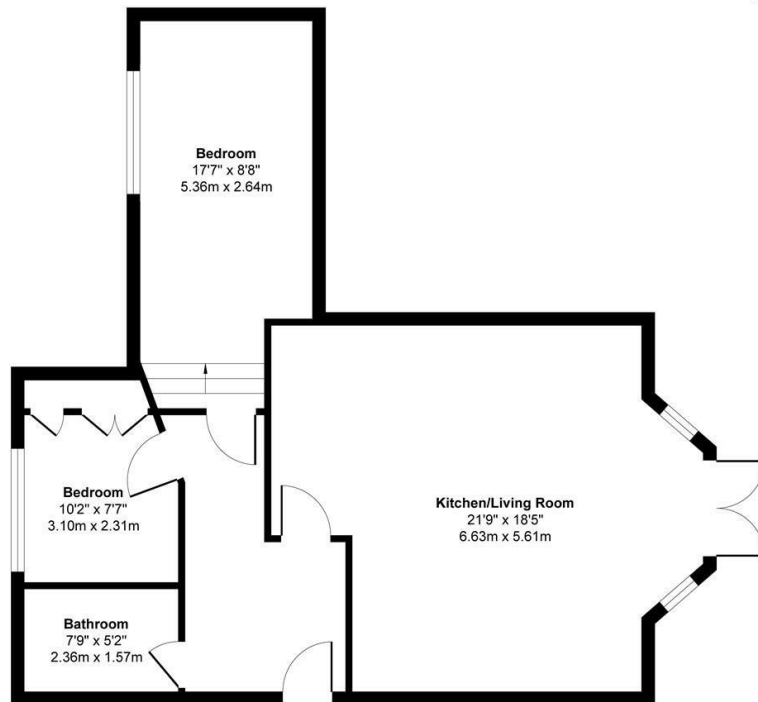
Offers in excess of £220,000



A beautifully presented two bedroom apartment with a PRIVATE BALCONY, off road parking and communal woodland. It's enviably positioned in a SEMI-RURAL, TRANQUIL LOCATION on the Northern outskirts of Hastings within a quiet lane and enjoys a leafy aspect. Set in to a landscaped hill with BEAUTIFUL VIEWS of the neighbouring countryside, accessed via a PRIVATE ENTRANCE the accommodation here is positioned on the ground floor and is arranged as an OPEN PLAN LIVING SPACE fitted with a contemporary kitchen and double doors opening to the balcony. The kitchen is fitted with sleek white units, complete with a SOCIABLE BREAKFAST BAR. There are two bedrooms together with a MODERN FAMILY BATHROOM where there is a shower over the bath. In addition to the balcony there is a private, PAVED AREA OF GARDEN by the entrance offering space for a table and chairs, perfect for dining al fresco. There is ALLOCATED OFF ROAD PARKING available for one vehicle. This fantastic property would make the PERFECT FIRST TIME HOME and is not to be missed.

## Archers Court

Approximate Gross Internal Floor Area  
714 sq. ft / 66.33 sq. m



GROUND FLOOR

Produced By Picpreview.co.uk Ltd.

