



The Olde House

La Rue Du Crocquet



The Olde House, La Rue Du Crocquet, St Brelade, JE3 8BZ

Dating back to around 1660, this delightful granite cottage is nestled on the quaint cobbled high street in St. Aubin. St. Aubin is one of Jersey's most sought-after areas, offering easy access to a range of harbour-side restaurants, shops, cafés, and a supermarket. The desirable location provides easy access into town, along the cycle track and is also ideally situated within a good catchment area for schools in the West, making it a fantastic choice for families.

Full of character & charm, spread over three floors, this home offers a well-thought-out living space. The ground floor features two inviting reception rooms, including a sitting room with a cosy log burner, perfect for adding warmth and ambiance. The separate kitchen, with stylish slated flooring, leads directly to the terrace. The first floor accommodates two spacious double bedrooms and a family bathroom, while the top floor boasts a further two rooms which could be used as offices, reception space or bedrooms. Additionally, a cloakroom and generous storage space enhance the practicality of the home.

Outside, the property is complemented by a lovely west-facing tiered decked garden, accessible from both the kitchen and one of the bedrooms. This outdoor space is perfect for hosting summer gatherings or simply relaxing in the sun. While the cottage doesn't have on-site parking, nearby rented parking is available for convenience. With its exceptional location, timeless character, and exciting future potential, this property presents an excellent opportunity to own a piece of St. Aubin's history.



Parish: St Brelade

Qualification: Qualified

Tenure: Freehold

Price £949,000



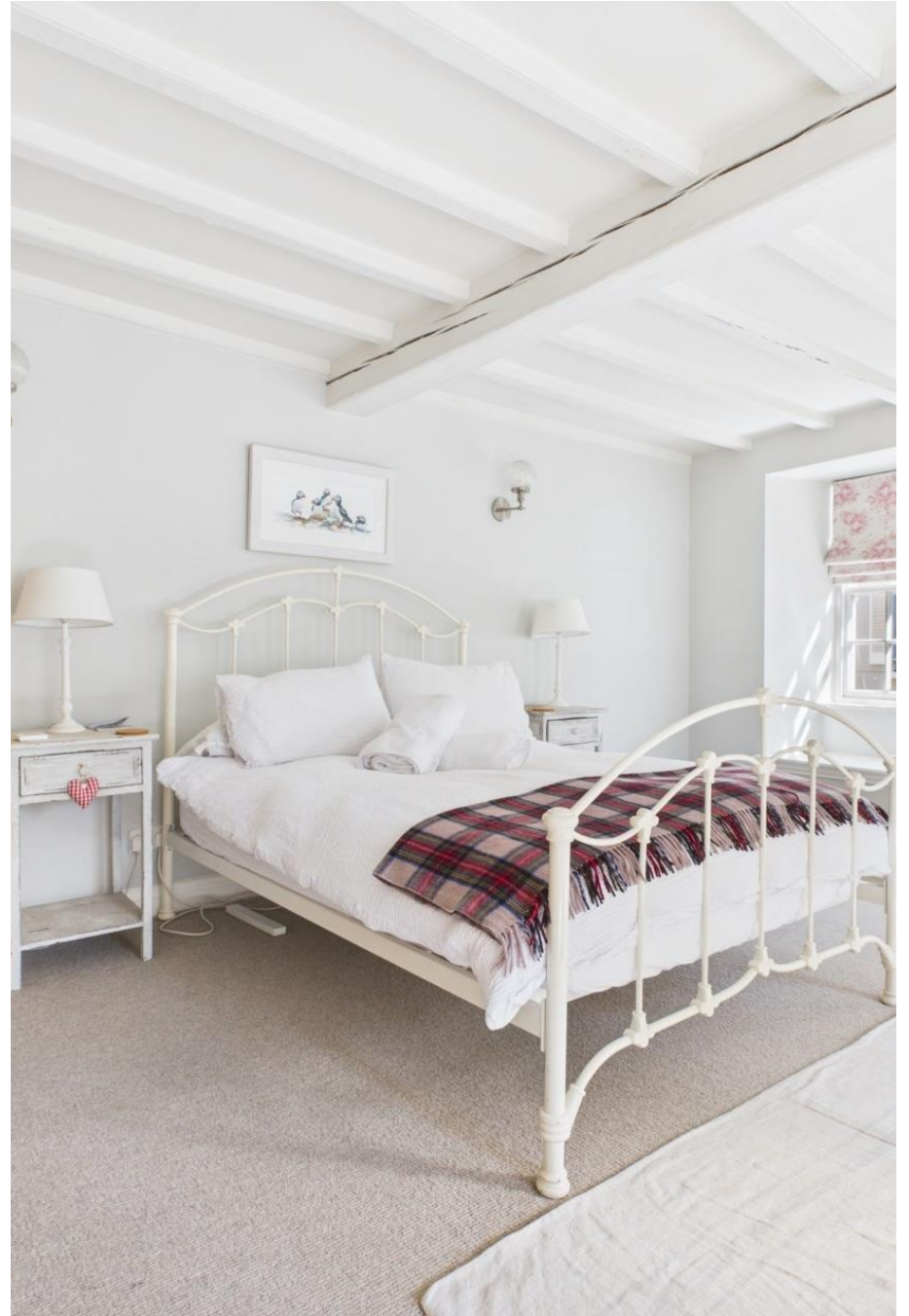
- Delightful granite cottage
- Kitchen plus two receptions on the ground floor
- Two bedrooms first floor
- Another two rooms, which could be used as bedrooms
- West-facing tiered garden
- St Aubin's village











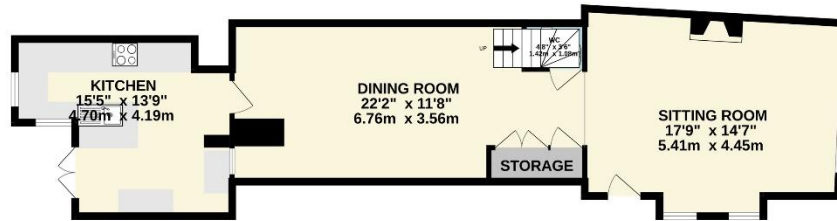




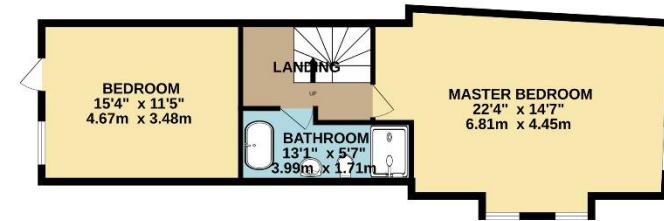




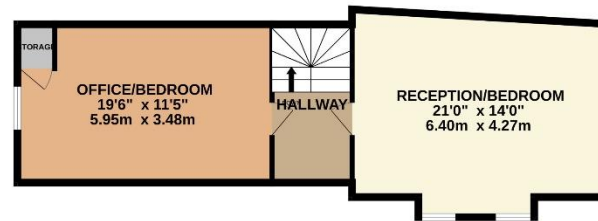
GROUND FLOOR
782 sq.ft. (72.7 sq.m.) approx.



1ST FLOOR
629 sq.ft. (58.4 sq.m.) approx.



2ND FLOOR
597 sq.ft. (55.5 sq.m.) approx.



TOTAL FLOOR AREA : 2008 sq.ft. (186.6 sq.m.) approx.

Whilst every attempt has been made to ensure the accuracy of the floorplan contained here, measurements of doors, windows, rooms and any other items are approximate and no responsibility is taken for any error, omission or mis-statement. This plan is for illustrative purposes only and should be used as such by any prospective purchaser. The services, systems and appliances shown have not been tested and no guarantee as to their operability or efficiency can be given.

Made with Metropix ©2025

This plan is for layout guidance only. Not drawn to scale unless stated. Windows and door openings are approximate. Whilst every care is taken in the preparation of this plan, please check all dimensions, shapes and compass bearings before making any decisions reliant upon them.

Services

Mains drains

Mains water

Electric Heating

+441534 877977

Knight Frank Jersey

37-39 Halkett Place St Helier, Jersey JE2 4WG

knightfrank.je

Your partners in property

1. Particulars: These particulars are not an offer or contract, nor part of one. You should not rely on statements given by Knight Frank Jersey in the particulars, by word of mouth or in writing ("information") as being factually accurate about the property, its condition or its value. Neither Knight Frank Jersey nor any joint agent has any authority to make any representations about the property, and accordingly any information given is entirely without responsibility on the part of Knight Frank Jersey. 2. Material Information: Please note that the material information is provided to Knight Frank Jersey by third parties and is provided here as a guide only. While Knight Frank Jersey has taken steps to verify this information, we advise you to confirm the details of any such material information prior to any offer being submitted. If we are informed of changes to this information by the seller or another third party, we will use reasonable endeavours to update this as soon as practical. 3. Photos, Videos etc: The photographs, property videos and virtual viewings etc. show only certain parts of the property as they appeared at the time they were taken. Areas, measurements and distances given are approximate only. 4. Regulations etc: Any reference to alterations to, or use of, any part of the property does not mean that any necessary planning, building regulations or other consent has been obtained. A buyer must find out by inspection or in other ways that these matters have been properly dealt with and that all information is correct. 5. Fixtures and fittings: A list of the fitted carpets, curtains, light fittings and other items fixed to the property which are included in the sale (or may be available by separate negotiation) will be provided by the Seller's Lawyer. Particulars dated 28/01/2026. All information is correct at the time of going to print.

