



## 5 Glebe Avenue | Harthill | Sheffield | S26 7YS

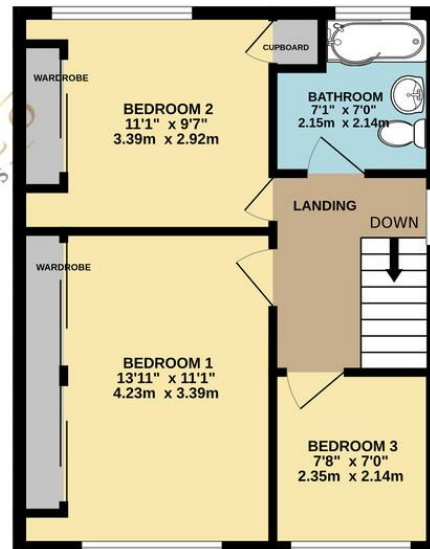
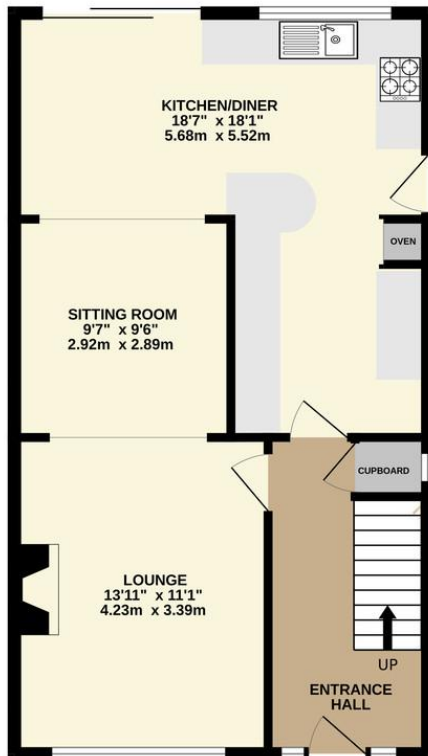
£240,000

Bell & Co Estates are delighted to present this lovely three-bedroom semi-detached home in the heart of Harthill, offered with no onward chain. The property begins with a large, welcoming entrance hallway that immediately sets the tone for the light and open feel of the home. To the front is the bright and airy lounge, complete with a charming feature fire and surround. This space flows effortlessly into a further sitting area. To the rear is the impressive galley-style kitchen which opens into the dining area. The kitchen itself provides ample cupboard and worktop space, along with appliances, making it practical and ready to enjoy. A stable-style back door also offers convenient access to the side of the property. Upstairs, the home boasts two large double bedrooms, both benefitting from fitted wardrobes and excellent built-in storage. A further well-proportioned front-facing bedroom completes the sleeping accommodation. The modern family bathroom includes a shower over bath, wash basin and wc. To the front is a lawned area with a driveway leading to the detached garage, which benefits from electricity—ideal for storage, workshop use or hobby space. The rear garden features a spacious patio area, lawned section, and the beautiful open outlook over fields, providing a peaceful and private outdoor retreat. Call now to arrange your viewing—this superb family home is not to be missed.



GROUND FLOOR  
582 sq.ft. (54.1 sq.m.) approx.

1ST FLOOR  
425 sq.ft. (39.5 sq.m.) approx.



## Contact Details

79 Wales Road  
Kiveton Park  
Sheffield  
South Yorkshire  
S26 6RA

[www.bellcoestates.com](http://www.bellcoestates.com)  
[info@bellcoestates.com](mailto:info@bellcoestates.com)  
03333 580590

Agents Note: Whilst every care has been taken to prepare these sales particulars, they are for guidance purposes only. All measurements are approximate are for general guidance purposes only and whilst every care has been taken to ensure their accuracy, they should not be relied upon and potential buyers are advised to recheck the measurements