

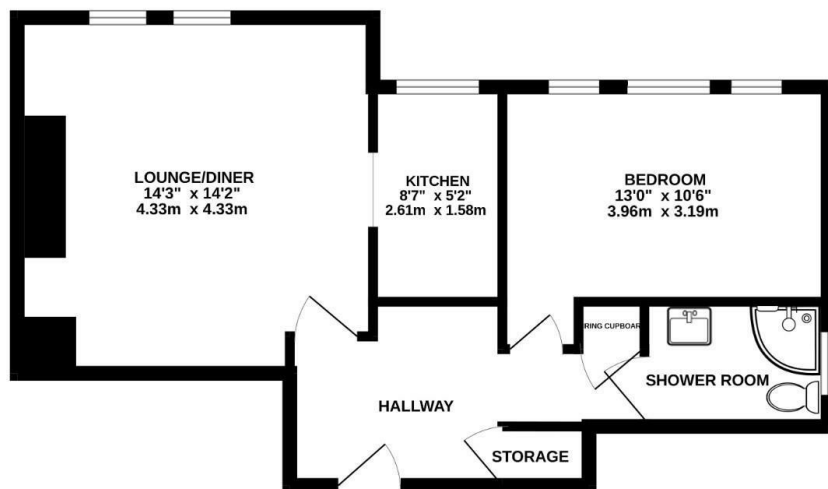


Flat 5, Albert Mews Albert Road, Cheadle Hulme, Cheadle, SK8

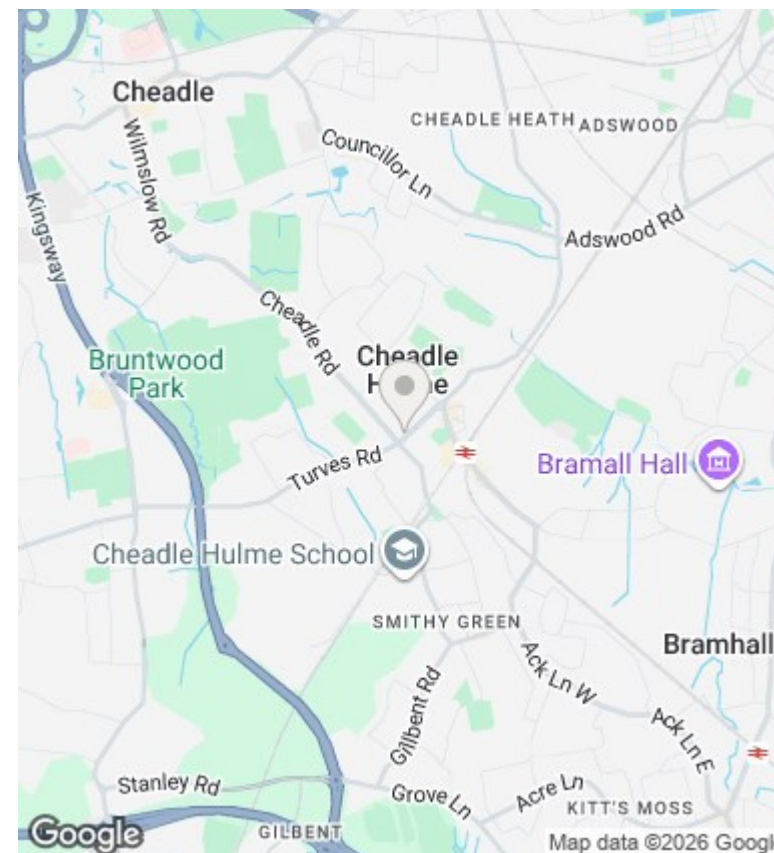
£81,900

- 70% Shared Ownership - Retirement Apartment
- Strictly For Buyers Over 55 Years of Age
- Good Size and Well Presented
- First Floor - One Double Bedroom
- Lift and Staircase to all Floors
- Communal Gardens & One Parking Space

FIRST FLOOR FLAT
469 sq.ft. (43.6 sq.m.) approx.



TOTAL FLOOR AREA: 469 sq.ft. (43.6 sq.m.) approx.
Whilst every attempt has been made to ensure the accuracy of the floorplan contained here, measurements of doors, windows, rooms and any other items are approximate and no responsibility is taken for any omission or mis-statement. This plan is for illustrative purposes only and should be used as such by any prospective purchaser. The services, systems and appliances shown have not been tested and no guarantee as to their operability or efficiency can be given.
Made with Metropix ©2026



Directions

Viewings

Viewings by arrangement only. Call 0161 432 0432 to make an appointment.

Council Tax Band

B

EPC Rating:

C

Energy Efficiency Rating		Current	Potential
Very energy efficient - lower running costs			
(92 plus)	A		
(81-91)	B		
(69-80)	C	69	77
(55-68)	D		
(39-54)	E		
(21-38)	F		
(1-20)	G		
Not energy efficient - higher running costs			
England & Wales		EU Directive 2002/91/EC	