



TO LET  
jordan fishwick  
lettings  
01455 563 222

*jordan fishwick*

Barton Street

£850 PCM



## **Barton Street, Macclesfield, SK11 6RX**

**£850 PCM**

### **VIEWING RECOMMENDED**

Extremely well presented two-bedroom end of terrace property only a stone's throw from local shops and within easy walking distance the town centre and all its amenities.

### **PART FURNISHED AND AVAILABLE NOW**

Lounge with living flame fire and wood laminate flooring, fitted dining kitchen with hob and oven and good sized understairs storage, Utility room with washer, dryer and fridge freezer along with door to communal garden. Upstairs there is a good-sized double bedroom with fitted wardrobes, single bedroom with wardrobe and bathroom with over bath shower. Outside there is a communal garden. Contact Macclesfield 01625 502222. £895.00pcm

COUNCIL TAX A

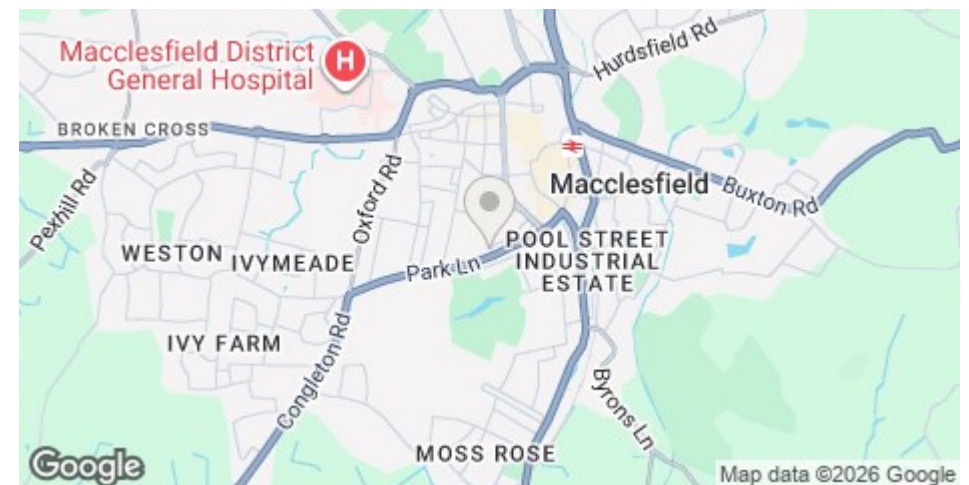
EPC D

### **LOCATION**

Set in Cheshire's plains, on the fringe of the Peak District National Park, Macclesfield combines the old with the new. Originally a medieval town, Macclesfield became the country's 'Silk' capital in the 1750's, whilst in recent years it has grown to become a thriving business centre. Nowadays Macclesfield is a modern shopping centre with a range of leisure facilities to suit most tastes. There are many independent and state primary schools and secondary schools and easy access to the town. The access points of the North West Motorway network system, Manchester International Airport and some of Cheshire's finest countryside are close at hand. Intercity rail links to London Euston and Manchester Piccadilly can be found at Macclesfield and Wilmslow railway stations as well as commuter rail links to the local business centres.

### **DIRECTIONS**

Leaving Macclesfield along Park Lane, take the 3rd turning on the right in to Brown Street and the 1st turning on the left in to Barton Street. The property is the 1st house on the left.



- TWO BEDROOMS
- CLOSE TO LOCAL SHOPS
- COMMUNAL GARDEN
- WALKING DISTANCE OF TRAIN STATION AND TOWN CENTRE
- COUNCIL TAX A
- EPC D

Postcode - SK11 6RX

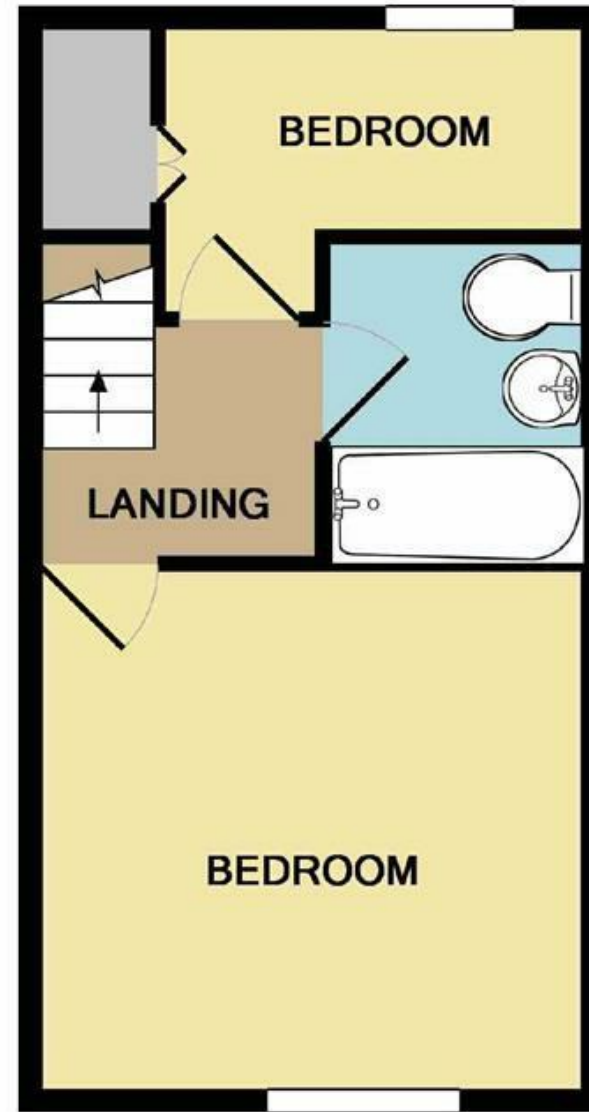
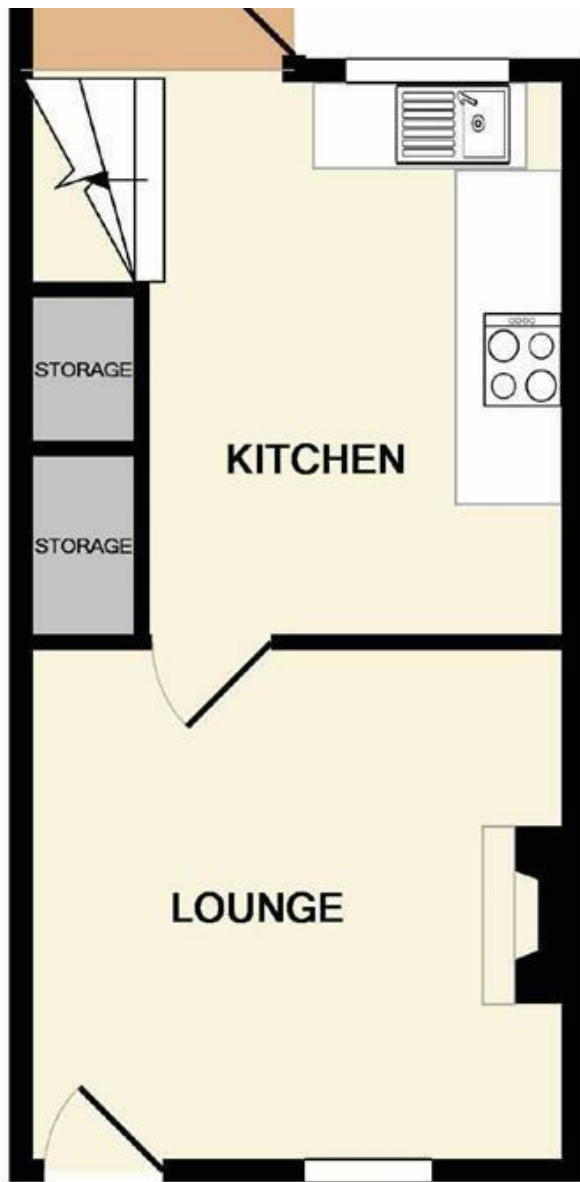
EPC Rating - D

Floor Area - sq ft

Local Authority - Cheshire East

Council Tax - A





These particulars are believed to be accurate but they are not guaranteed and do not form a contract. Neither Jordan Fishwick nor the vendor or lessor accept any responsibility in respect of these particulars, which are not intended to be statements or representations of fact and any intending purchaser or lessee must satisfy himself by inspection or otherwise as to the correctness of each of the statements contained in these particulars. Any floorplans on this brochure are for illustrative purposes only and are not necessarily to scale.

Offices at: Offices at Chorlton, Didsbury, Disley, Hale, Glossop, Macclesfield, Manchester Deansgate, Manchester Whitworth Street, New Mills, Sale, Wilmslow and Withington

01625 536300