



Cormont Road, SE5

£1,350,000

A much loved four bedroom family home, retaining much of its character and charm. Offering an abundance of living space, two bathrooms and a South West facing rear garden.

Cormont Road is a peaceful street fronting Myatt's Fields Park and is on the cusp of Zone 1. There are a number of local shops, restaurants close by and excellent transport links including Oval, Stockwell and Brixton tube stations (Northern & Victoria Lines) Loughborough Junction (National Rail) and a number of good local bus routes.

Features

- Four Bedrooms
- Peaceful Convenient Location
- Two Bathrooms
- South West Facing Garden
- Two Reception Rooms
- Character Features



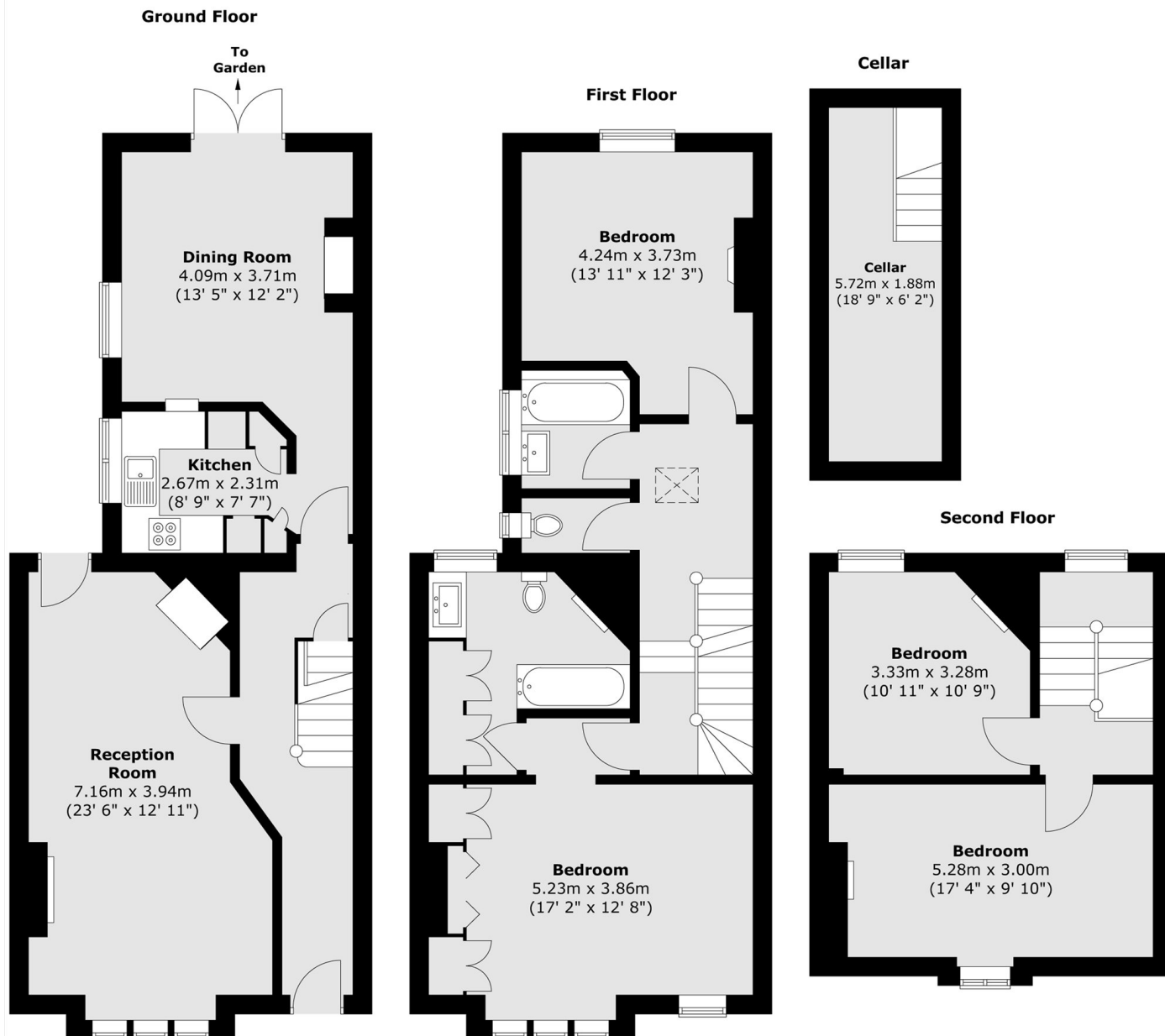
Cormont Road, SE5

The welcoming entrance hall leads through to an impressive double length reception room, featuring elegant wooden floors, large sash windows that flood the space with natural light and a beautiful working fireplace creating a warm and inviting atmosphere. The room is further enhanced by high ceilings, original recessed cabinetry and direct access to the rear garden. To the rear is a practical kitchen and a separate dining room providing a wonderful space for the family gatherings and entertaining. French doors lead out to a sunny south-west facing garden, surrounded by fragrant lavender and a fruiting vine perfect for outdoor dining and relaxation.

The first floor comprises a generous principal bedroom to the front, offering lovely views over Myatt's Fields Park, full-width built-in wardrobes, and an en-suite bathroom with a lovely feature fire place. To the rear, there is a further double bedroom served by a modern bathroom and a separate W/C. The second floor provides two additional double bedrooms, along with useful loft storage space. This much-loved home has been carefully maintained for over 30 years and is ready for its next owner to make it their own. Additional benefits include a cellar, ideal for storage.



Cormont Road, London, SE5



Total area (approx.) : 167.7 sq. m (1805 sq. ft)