



Werter Road, SW15

£995,000

Dexters



Werter Road, SW15

Bright and spacious throughout, this stunning three bedroom, two Bathroom, maisonette has excellent living/entertaining space and a private balcony.

Renovated by the current owners, the property has its own private entrance on the ground floor, opening into a spacious hallway. Leading up to the first floor where you will find two large double bedrooms both with built in wardrobes and a single bedroom, perfect for a home office. There is a family bathroom and the primary bedroom has access to an Ensuite.

The second floor has a large entertaining space with the reception room opening onto a stunning conservatory like area housing the dining area and fitted kitchen, from here you have access onto a private balcony with views of greenery and roof lines.

Werter Road is just off Putney High Street, between the station, River Thames and Wandsworth Park. Just moments from East Putney Tube and Putney station.

Features

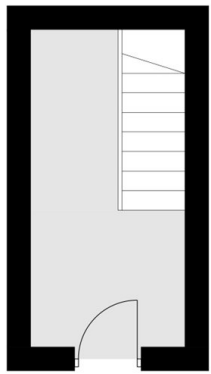
- Three Bedrooms
- Two Bathrooms
- Chain Free
- Private Balcony
- Share Of Freehold
- Own Front Door



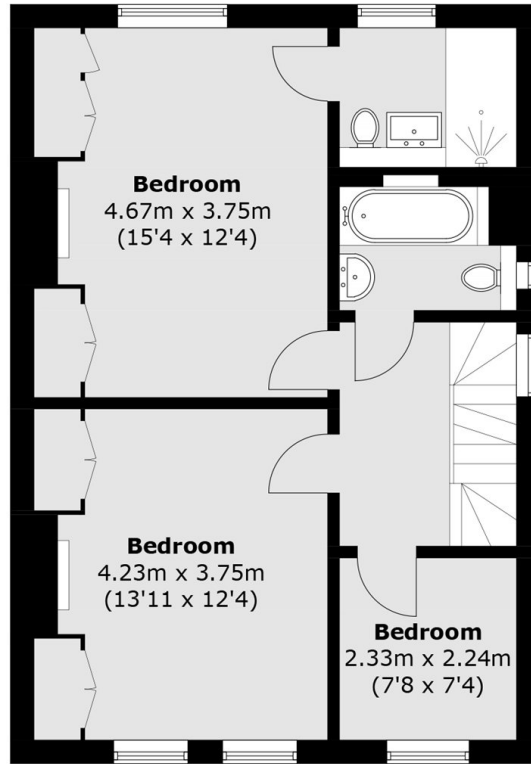




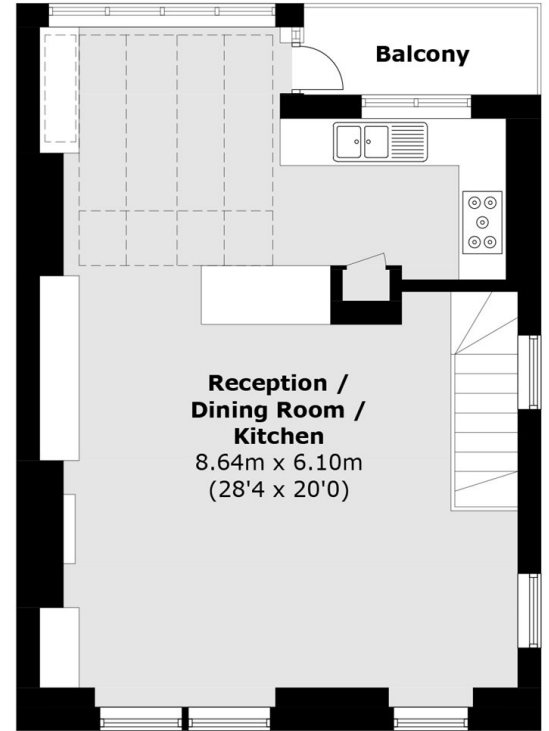
Werter Road, London, SW15



Ground Floor



First Floor



Second Floor

Total area (approx.): 113.7 sq. m (1,223.9 sq. ft)
Balcony: 3.3 sq. m (35.5 sq. ft)