



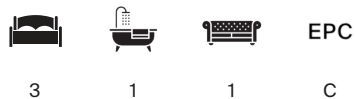
THE COACH HOUSE

Preston, Ramsbury, Wiltshire



LIGHT AND WELL PRESENTED COTTAGE SITUATED IN PRESTON

Sitting room | Kitchen/breakfast room | Cloakroom | Three bedrooms | Bathroom



Local Authority: Wiltshire Council

Council Tax band: D

Tenure: Freehold

Services: Mains water, electricity and gas heating. Private drainage.

what3words: ///depended.genius.pasta

Postcode: SN8 2HF

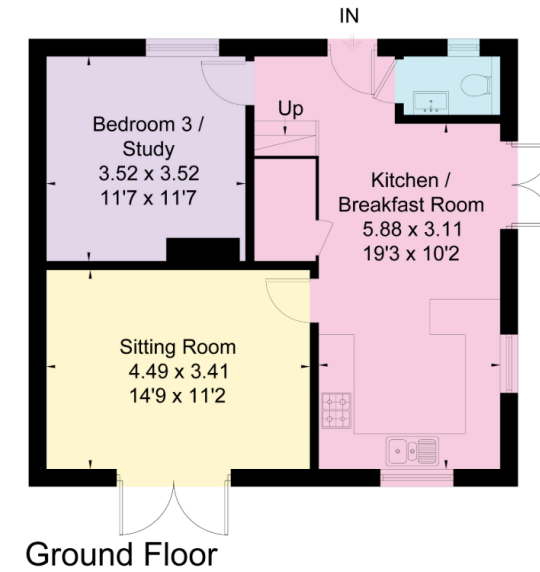


The Coach House provides excellent accommodation and includes an open-plan kitchen/breakfast room with a sitting room and cloakroom. Doors from the breakfast room and sitting room lead onto sheltered terraces.

There are three bedrooms, one on the ground floor, which could be used as a study and two further bedrooms with vaulted ceilings and a bathroom on the first floor.

Outside, a pair of five-bar gates leads to a gravel parking area. The delightful mature garden amounts to about 0.29 acres and enjoys rural views; it has an orchard area, a variety of mature trees and a bourne running along the western boundary.

Hungerford 6 miles (Paddington 65 minutes), Marlborough 9 miles, Swindon 11 miles (Paddington 65 minutes), M4 (J14) 7.5 miles (Distances and times are approximate)



Approximate Gross Internal Area = 92.8 sq m / 999 sq ft

This plan is for layout guidance only. Not drawn to scale unless stated. Windows and door openings are approximate. Whilst every care is taken in the preparation of this plan, please check all dimensions, shapes and compass bearings before making any decisions reliant upon them. (ID767266)

THE LOCATION

The Coach House is located in Preston, a small hamlet between the popular villages of Ramsbury and Aldbourne.

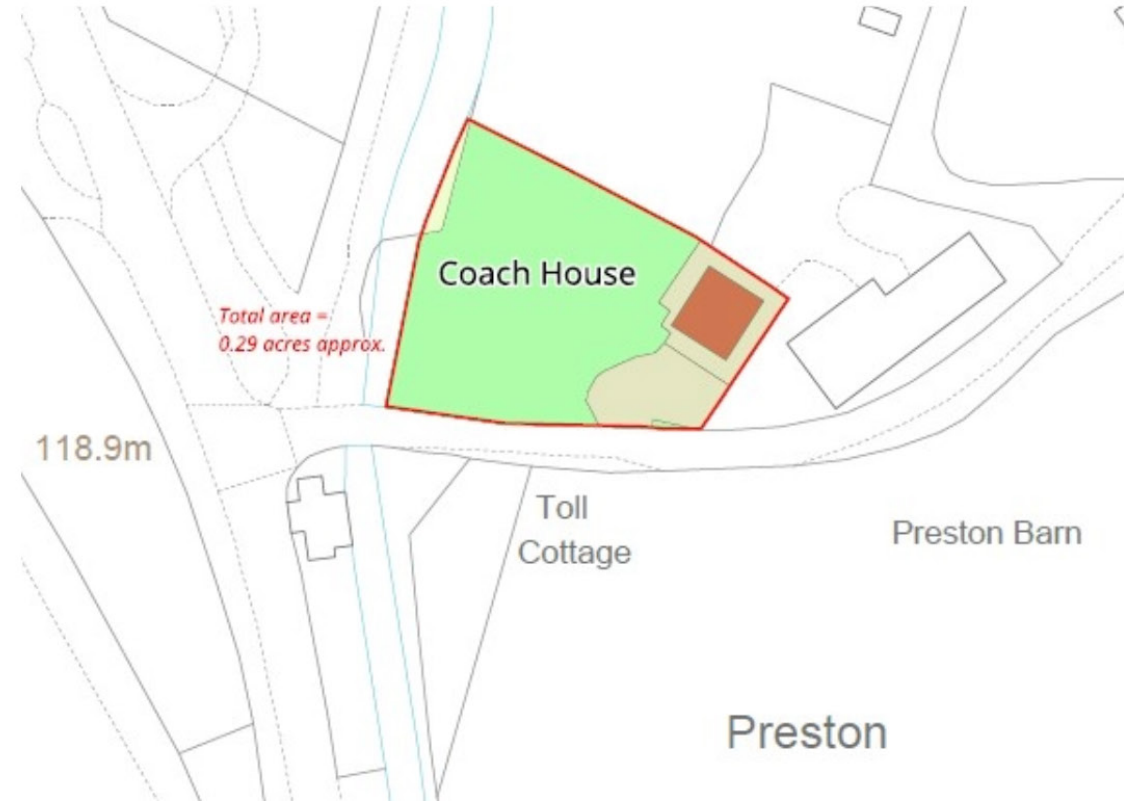
Ramsbury has many amenities, including several shops, The Bell public house and café, healthcare practice and an outstanding Ofsted primary school. Aldbourne has many facilities and is just over a mile from the property.

Nearby, Hungerford has retained its character as a market town and is well known for its excellent range of independent and antique shops as well as offering further facilities and a supermarket. The larger market town of Marlborough and Swindon are within easy reach and provide a wide selection of shopping and recreational facilities.

The property is well placed for excellent communications and schools, with trains from Hungerford to Paddington taking about 60 minutes.

In addition to the village schools in Ramsbury and Aldbourne, other popular schools in the area include Pinewood, Marlborough College, St John's and Dauntseys.





We would be delighted
to tell you more.

Rob Wightman
+44 1488 688 547
rob.wightman@knightfrank.com

Knight Frank Hungerford
Ramsbury House, 22 High Street
Hungerford, RG17 ONF

knightfrank.co.uk

Your partners in property

1. Particulars: These particulars are not an offer or contract, nor part of one. You should not rely on statements given by Knight Frank in the particulars, by word of mouth or in writing ("information") as being factually accurate about the property, its condition or its value. Neither Knight Frank nor any joint agent has any authority to make any representations about the property, and accordingly any information given is entirely without responsibility on the part of Knight Frank. 2. Material Information: Please note that the material information is provided to Knight Frank by third parties and is provided here as a guide only. While Knight Frank has taken steps to verify this information, we advise you to confirm the details of any such material information prior to any offer being submitted. If we are informed of changes to this information by the seller or another third party, we will use reasonable endeavours to update this as soon as practical. 3. Photos, Videos etc: The photographs, property videos and virtual viewings etc. show only certain parts of the property as they appeared at the time they were taken. Areas, measurements and distances given are approximate only. 4. Regulations etc: Any reference to alterations to, or use of, any part of the property does not mean that any necessary planning, building regulations or other consent has been obtained. A buyer must find out by inspection or in other ways that these matters have been properly dealt with and that all information is correct. 5. Fixtures and fittings: A list of the fitted carpets, curtains, light fittings and other items fixed to the property which are included in the sale (or may be available by separate negotiation) will be provided by the Seller's Solicitors. 6. VAT: The VAT position relating to the property may change without notice. 7. To find out how we process Personal Data, please refer to our Group Privacy Statement and other notices at <https://www.knightfrank.com/legals/privacy-statement>.

Particulars dated November 2025. Photographs and videos dated November 2025. All information is correct at the time of going to print. Knight Frank is the trading name of Knight Frank LLP. Knight Frank LLP is a limited liability partnership registered in England and Wales with registered number OC305934. Our registered office is at 55 Baker Street, London W1U 8AN. We use the term 'partner' to refer to a member of Knight Frank LLP, or an employee or consultant. A list of members names of Knight Frank LLP may be inspected at our registered office. If you do not want us to contact you further about our services then please contact us by either calling 020 3544 0692, email to marketing.help@knightfrank.com or post to our UK Residential Marketing Manager at our registered office (above) providing your name and address.