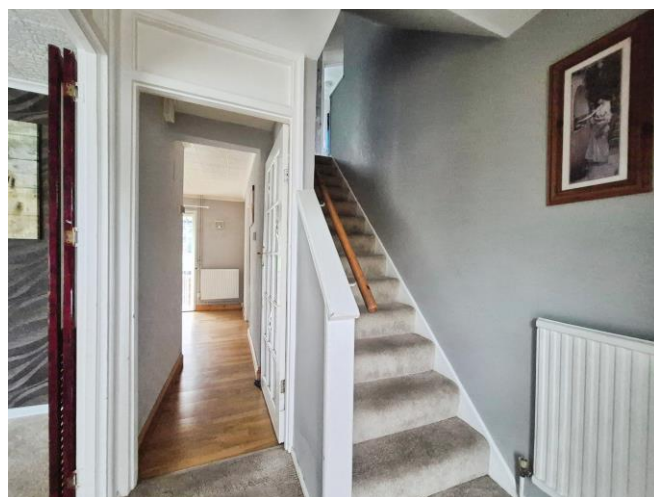




Darby Crescent, offers in excess of £120,000

- 3 Bedroom
- Driveway
- Great Location
- Ideal first time buy or investment
- EPC Rating: E



 3  1  1



About the property

This three-bedroom terraced house is for sale in Darby Crescent, situated in close proximity to a range of local amenities. The property is in good condition and provides a practical layout featuring two reception rooms, a kitchen, and one bathroom, making it suitable for families, first-time buyers, or investors. Benefiting from a driveway providing private off-road parking.

Having a selection of schools nearby, catering to families with children of all ages, and there are convenience stores, supermarkets, and other everyday services within walking distance of the property.

The property's EPC rating of D and its council tax band A may appeal to those looking to manage their outgoings. This is a well-positioned home in Ebbw Vale, suitable for a range of purchasers seeking convenience and access to local amenities.

This property is of non-standard construction,



Accommodation

Lounge

10' 2" x 10' 7" max (3.10m x 3.23m max)

Reception Room

8' 8" x 13' (2.64m x 3.96m)

Kitchen

16' 10" x 8' 7" (5.13m x 2.62m)

Rear Porch

4' 1" x 5' (1.24m x 1.52m)

Bedroom 1

10' 6" max x 13' 3" (3.20m max x 4.04m)

Bedroom 2

8' 11" x 13' 9" max (2.72m x 4.19m max)

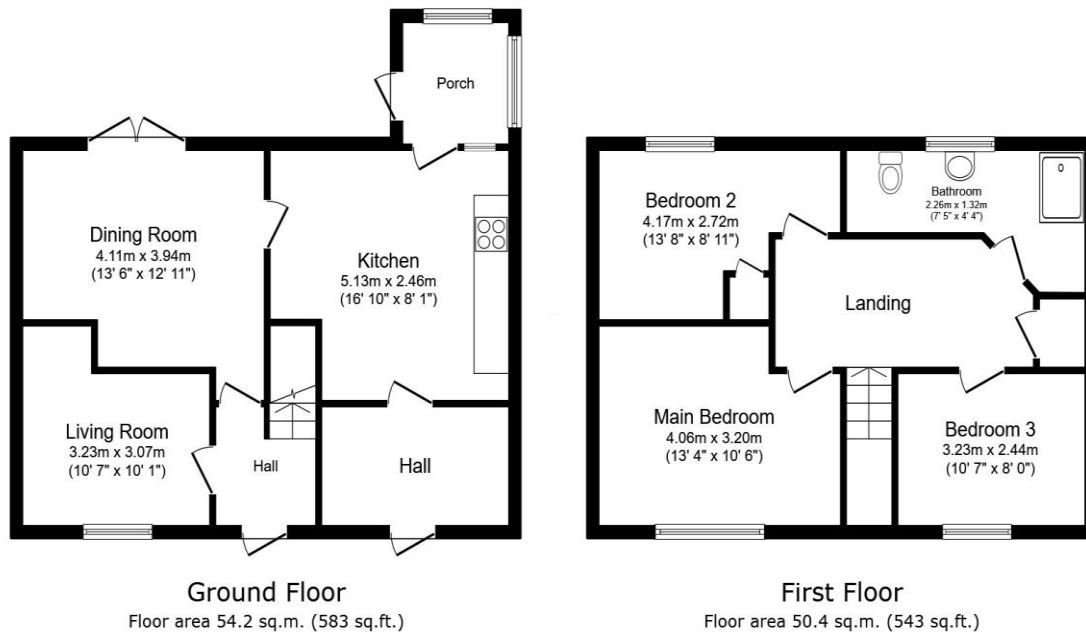
Bedroom 3

10' 6" x 7' 11" (3.20m x 2.41m)

01495360922

ebbwvale@peteralan.co.uk

Floorplan



Total floor area: 104.6 sq.m. (1,126 sq.ft.)

This floor plan is for illustrative purposes only. It is not drawn to scale. Any measurements, floor areas (including any total floor area), openings and orientations are approximate. No details are guaranteed, they cannot be relied upon for any purpose and do not form any part of any agreement. No liability is taken for any error, omission or misstatement. A party must rely upon its own inspection(s). Powered by www.Propertybox.io



Important Information

Note while we endeavour to make our sales details accurate and reliable, if there is any point which is of particular interest to you, please contact the office and we will be pleased to confirm the position for you. We have not personally tested any apparatus, equipment, fixtures, fittings or services and cannot verify they are in working order or fit for their purposes. Nothing in these particulars is intended to indicate that carpets or curtains, furnishings or fittings, electrical goods (whether wired or not). Gas fires or light fittings or any other fixtures not expressly included form part of the property offered for sale. This computer generated Floorplan, if applicable, is intended as a general guide to the layout and design of the property. It is not to scale and should not be relied upon for dimensions. Tenure: We cannot confirm the tenure of the property as we have not had access to the legal documents. The buyer is advised to obtain verification from their solicitor or surveyor.

Peter Alan Limited is registered in England and Wales under company number 2073153, Registered Office is Cumbria House, 16-20 Hockliffe Street, Leighton Buzzard, Bedfordshire, LU7 1GN. VAT Registration Number is 500 2481 05. For activities relating to regulated mortgages and non-investment insurance contracts, Peter Alan Limited is an appointed representative of Connells Limited which is authorised and regulated by the Financial Conduct Authority. Connells Limited's Financial Services Register number is 302221. Most buy-to-let