



# Detling Close

Gillingham | ME8 6UA

# Detling Close , Gillingham, ME8 6UA

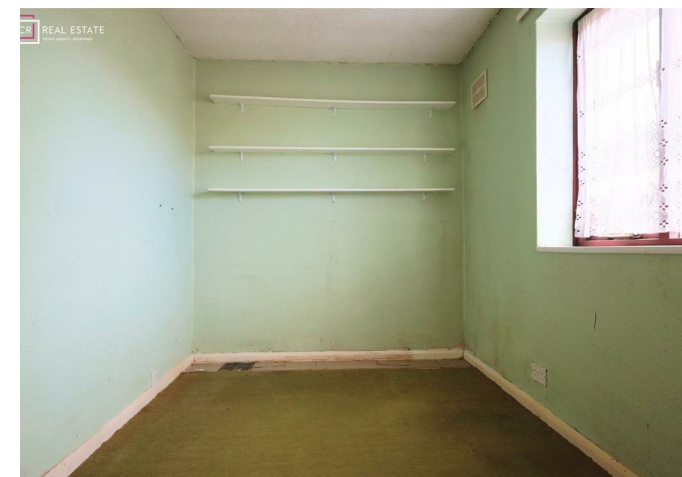
Offered to the market with no onward chain, this three-bedroom terrace property provides spacious accommodation throughout and would benefit from updating.

The ground floor offers generous living space, providing flexibility for a range of layouts. The property includes a lift, which serves the lounge and bedroom.

To the first floor are three good-sized bedrooms, together with a family bathroom and separate WC.

Externally, the property benefits from a good-sized rear garden. Conveniently located close to local shops and well-regarded schools, the property offers practical family accommodation with potential for improvement.

Offers Over £250,000



## Living Room

15'9 x 10'6 (4.80m x 3.20m)

## Kitchen

14'0 x 9'5 (4.27m x 2.87m)

## Utility Area

8'0 x 5'9 (2.44m x 1.75m)

## Bedroom

14'0 x 8'8 (4.27m x 2.64m)

## Bedroom

9'8 x 6'9 (2.95m x 2.06m)

## Cloakroom/WC

5'7 x 2'2 (1.70m x 0.66m)

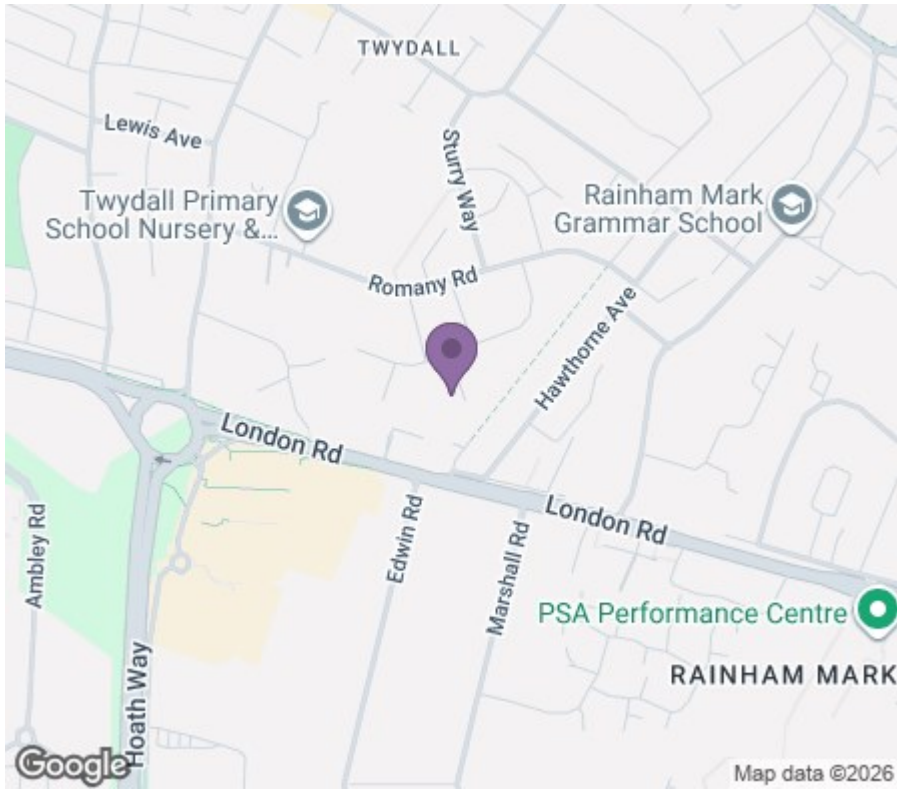
## Family Bathroom

5'5 x 4'9 (1.65m x 1.45m)

## Bedroom

10'6 x 10'6 (3.20m x 3.20m)





18 - 20 High Street  
 Gillingham  
 Kent  
 ME7 1BB  
**01634 570057**

[www.crr realestate.co.uk](http://www.crr realestate.co.uk)  
[twitter.com/CRRealEstateUK](https://twitter.com/CRRealEstateUK)  
[facebook.com/CRRealEstateUK](https://facebook.com/CRRealEstateUK)



Energy Efficiency Rating		Current	Potential
<i>Very energy efficient - lower running costs</i>			
(92 plus) <b>A</b>			
(81-91) <b>B</b>			
(69-80) <b>C</b>			
(55-68) <b>D</b>			
(39-54) <b>E</b>			
(21-38) <b>F</b>			
(1-20) <b>G</b>			
<i>Not energy efficient - higher running costs</i>			
<b>England &amp; Wales</b>	EU Directive 2002/91/EC		

Environmental Impact (CO <sub>2</sub> ) Rating		Current	Potential
<i>Very environmentally friendly - lower CO<sub>2</sub> emissions</i>			
(92 plus) <b>A</b>			
(81-91) <b>B</b>			
(69-80) <b>C</b>			
(55-68) <b>D</b>			
(39-54) <b>E</b>			
(21-38) <b>F</b>			
(1-20) <b>G</b>			
<i>Not environmentally friendly - higher CO<sub>2</sub> emissions</i>			
<b>England &amp; Wales</b>	EU Directive 2002/91/EC		

CR Real Estate endeavour to maintain accurate depictions of properties in Virtual Tours, Floor Plans and descriptions, however, these are intended only as a guide and purchasers must satisfy themselves by personal inspection.