



15 Elder Drive, Dewsbury

Offers Over **£260,000**



15 Elder Drive

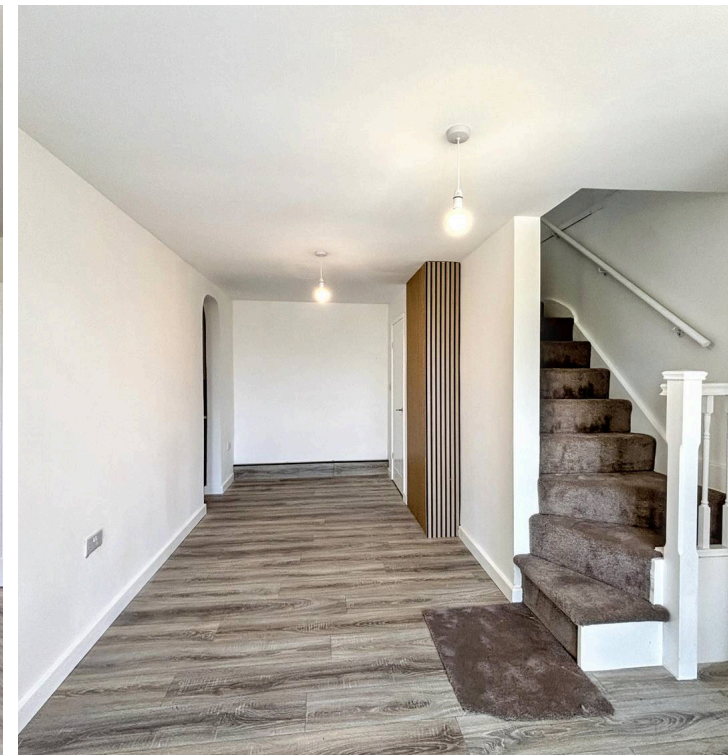
Dewsbury

Unique & highly versatile split-level home featuring an adaptable layout, perfect for use as a spacious 3-bedroom with an elevated upstairs reception room. Boasting a modern kitchen and utility downstairs, this impressive property flows seamlessly into a bright conservatory and beautifully landscaped, private rear garden.

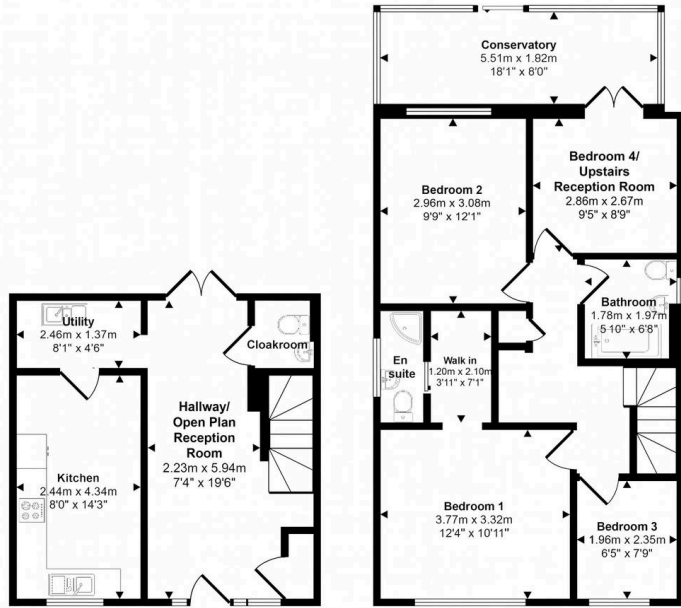
Council Tax band: B

Tenure: Freehold

- Detached House
- Split Level Living
- Versatile Living Space
- Terraced Garden
- Chain Free Sale
- Vacant Possession



Approx Gross Internal Area
102 sq m / 1089 sq ft



Lower Floor
Approx 34 sq m / 369 sq ft

First Floor
Approx 66 sq m / 730 sq ft

Whilst every attempt has been made to ensure the accuracy of the floor plan contained here, measurements of doors, windows, rooms and any other items are approximate and no responsibility is taken for any error, omission, or mis-statement. The measurements should not be relied upon for valuation, transaction and/or funding purposes. This plan is for illustrative purposes only and should be used as such by any prospective purchaser or tenant.





Aspire Estates

Aspire Properties, Wira Business Park Ring Road - LS16 6EB

0113 8875079

estatesales@aspirepropertygroup.co.uk

www.aspirepropertygroup.co.uk/