



## Valley Road, SW16

£2,900 PCM

A spacious split level maisonette comprising over 1200 sq ft of space, with three double bedrooms and a further fourth room which can be used as an office, two bathrooms, large reception room, separate eat in kitchen/diner and

- Four Bedroom
- Split Level Maisonette
- Two Bathrooms
- Eat-in Kitchen
- Private Rear Garden
- Unfurnished

For further information on the costs associated with renting a property, please pop into our office or visit our website.



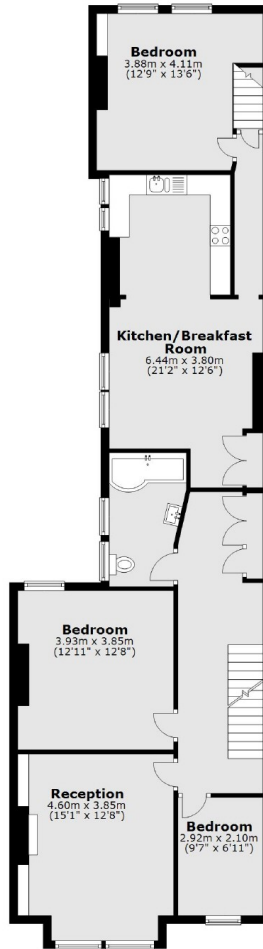
The property is well located for all the amenities of the area including: many bars, independent coffee shops, restaurants, several large supermarkets, leisure centre and health clubs. Streatham Common itself and multiple transport links including three train stations and countless bus routes leading into central London are close at hand.



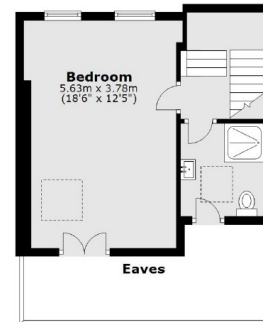
Ground Floor



First Floor



Second Floor



Total area: approx. 142.6 sq. metres (1535.2 sq. feet)

Jacksons Streatham  
1-3 De Montfort Parade  
Streatham High Road  
Streatham  
London  
SW16 1BU

Energy Rating: We aim to make our particulars both accurate and reliable. However they are not guaranteed; nor do they form part of an offer or contract. If you require clarification on any points then please contact us, especially if you're traveling some distance to view. Please note that appliances and heating systems have not been tested and therefore no warranties can be given as to their good working order.