

TO LET



Kite House, Bermondsey, SE1

£2,300.00 PCM

 **2**

 **1**


samuel estates
YOUR PROPERTY • OUR BUSINESS

Property Description

This stunning and well-presented two double bedroom apartment located in Bermondsey, SE1 offers you great living space and amazing transport links.

The property comprises of a spacious open-plan kitchen/ living room with space for dining, two equal sized double bedrooms, a modern three piece bathroom with shower over bath and a separate WC. Added benefits include additional storage and floor to ceiling double glazed windows throughout providing the property with floods of natural light.

Plenty of popular bars, pubs, shops and the large open spaces of Southwark Park are all within close proximity, along with South Bermondsey Station (Southern) and Bermondsey Underground Station (Jubilee Line) both being a short walk away providing you with excellent transport links across London and to the City.

Disclaimer

Samuel Estates their clients and any joint agents give notice that they are not authorised to make or give any representation or warranties in relation to the property. No responsibility is assumed for any statement that may be made in these lettings particulars. These particulars do not form any part of any offer or contract and must not be relied upon as statements or representation of fact. Any distances, measurements or areas are approximate. The text, photographs and floorplans are for guidance only and not comprehensive in any way. Samuel Estates have not tested any services, appliances or facilities and prospective tenants must satisfy themselves by inspection.



Material Information

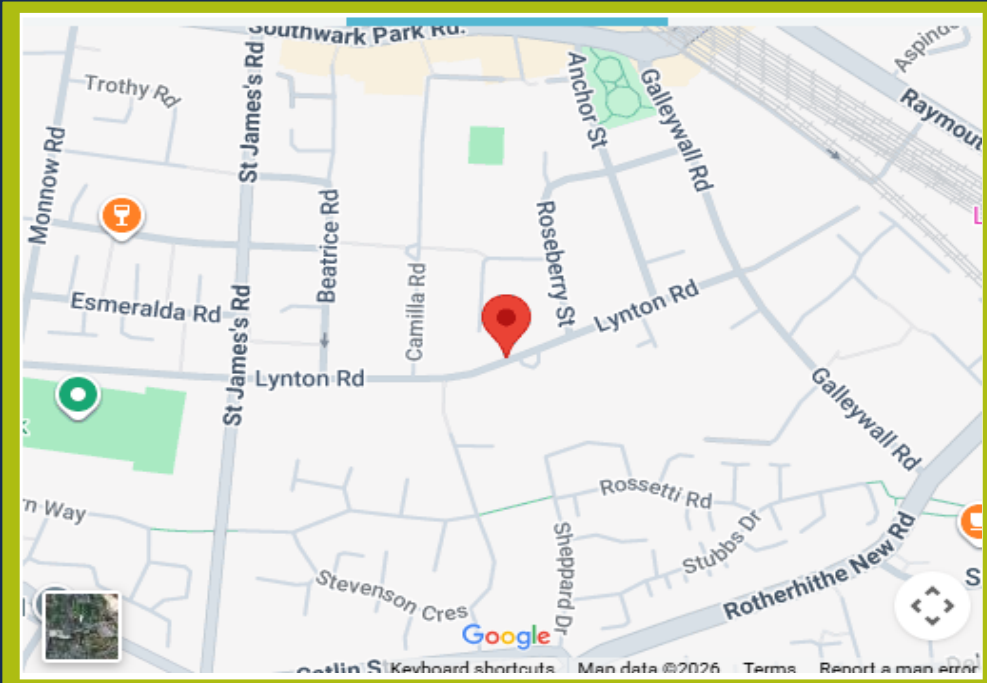
Date Available – 08/05/2026

Holding deposit amount – £530

Security Deposit amount (Five weeks rent) – £2,653.00

Council Tax Band – D

Local Authority – Southwark Council



Property Type

Apartment (Purpose Build)



Construction Type

Brick



Parking

No Parking



Listed Building Status

None



Water Supply

Thames Water



Electricity Supply

Mains



Heating

Gas / Electric
Communal / Mains



Broadband

Ultrafast



Mobile Signal

Excellent



Flood Risk

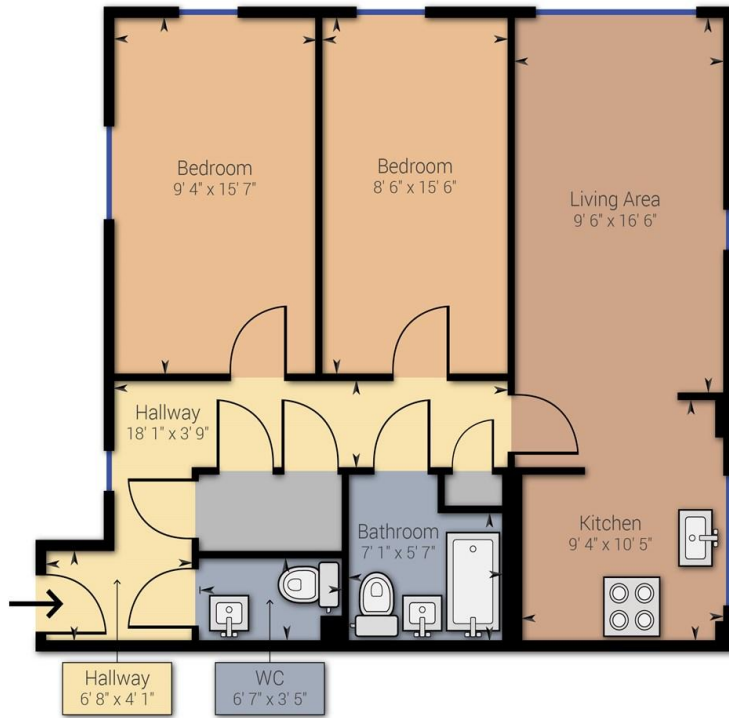
Has the property been flooded in the past five years: NO

Level of Risk: None



Proposed Development in Immediate Locality?

None



Approximate net internal area: 760.59 ft² / 70.66 m²
 While every attempt has been made to ensure accuracy, all measurements are approximate, not to scale. This floor plan is for illustrative purpose only and should be used as such by any prospective tenant or purchaser.

Powered by Giraffe360



Energy Efficiency Rating

	Current	Potential
Very energy efficient - lower running costs		
92-100 A		
81-91 B	87	87
69-80 C		
55-68 D		

Balham
 45 Bedford Hill,
 London, SW12 9EY
 ☎ 020 8673 4666

Colliers Wood & Wimbledon
 30 Watermill Way,
 London, SW19 2RT
 ☎ 020 8090 9000

Streatham
 432/434 Streatham High Road
 London, SW16 3PX
 ☎ 020 8679 9889

