



Living
made
better

New Providence Wharf
Blackwall, E14 9PB



£3,200 PCM

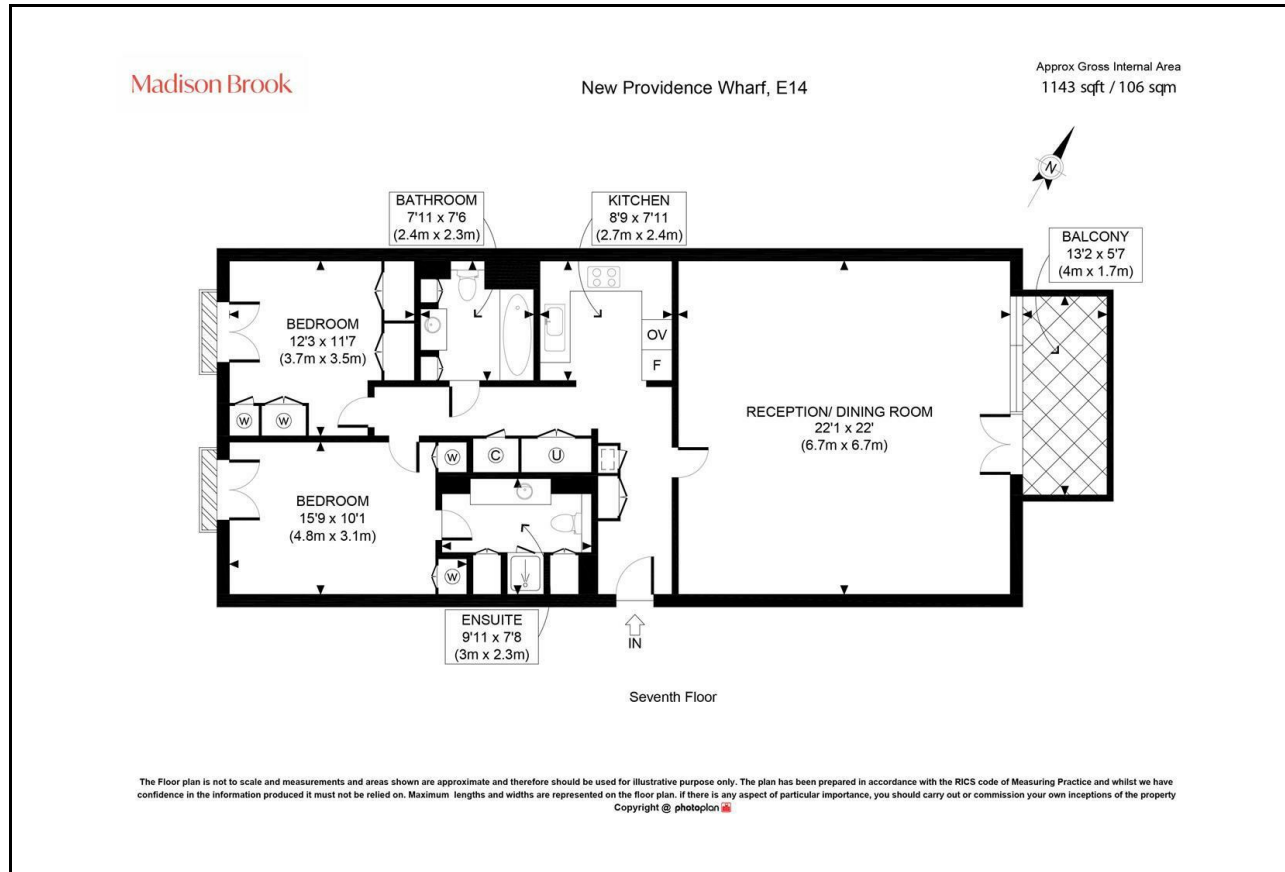
New Providence Wharf, Blackwall, E14 9PB

Madison Brook

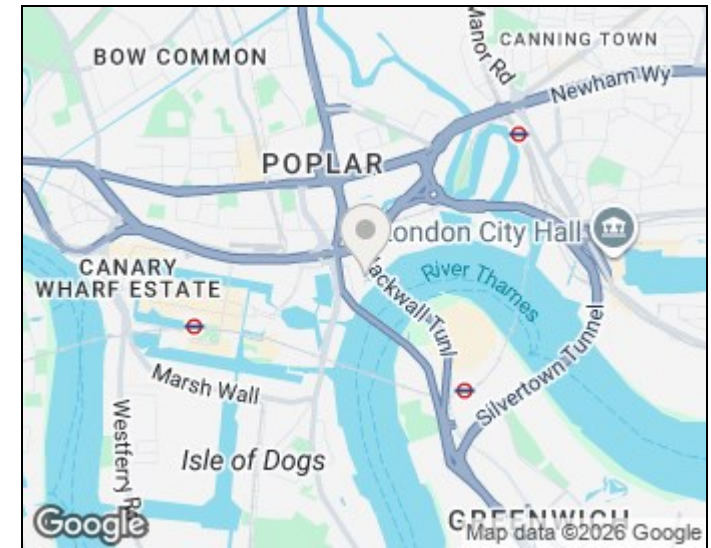
Property Summary

A stylish two-bedroom apartment set within the prestigious New Providence Wharf development, offers a spacious and bright reception and dining room leading to a balcony with stunning views towards the River Thames and O2 Arena, a separate integrated kitchen, two bedrooms, an en-suite bathroom alongside a three-piece family bathroom. Residents benefit from 24 hour concierge, gym, swimming pool and onsite security.

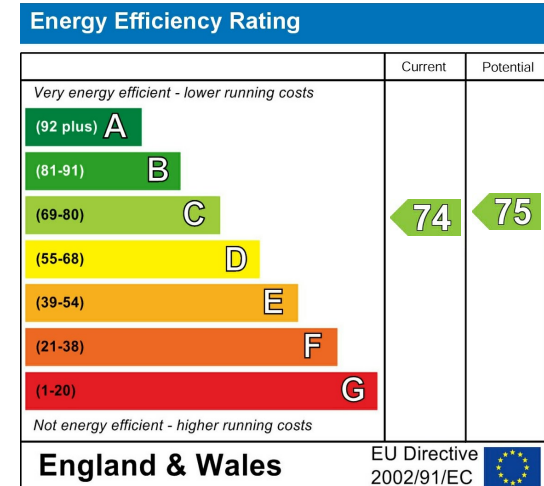
Floorplan



Area Map



Energy Efficiency Graph



These particulars, whilst believed to be accurate are set out as a general outline only for guidance and do not constitute any part of an offer or contract. Intending purchasers should not rely on them as statements of representation of fact, but must satisfy themselves by inspection or otherwise as to their accuracy. No person in this firm's employment has the authority to make or give any representation or warranty in respect of the property.

Unit B 20 Western Gateway, Royal Victoria
Dock, London, E16 1BS
Tel: 020 3946 6000 Email:
docklands@madisonbrook.com
<https://madisonbrook.com/>