



Connells

Longfellow Road
Coventry



Property Description

Situated on Longfellow Road, within the popular and well-established residential area of CV2 5HF, this well-proportioned three-bedroom terraced property offers excellent family accommodation with the added benefit of a garage and vehicular access to the rear.

The property is approached via a traditional frontage and opens into a welcoming entrance hall. The ground floor features a spacious through lounge/dining room, providing a versatile living and entertaining space, with doors opening directly to the conservatory.

The kitchen is positioned to the rear of the property and offers ample room for everyday use, with scope for personalisation. Upstairs, the accommodation comprises three well-sized bedrooms and a family bathroom.

Externally, the rear garden provides a private outdoor space, with the added advantage of car access leading to a garage, making this a particularly practical home for modern living.

Well located for local amenities, schools and transport links, this property represents an excellent opportunity for families, first-time buyers or investors alike.

Early viewing is recommended.

Approach

Front door.

Entrance Hall

Radiator.

Through Lounge/Dining Room

Double glazed window to the front elevation, two radiators, feature fireplace surround with gas fire and double glazed patio doors to conservatory.

Conservatory

Fitted Kitchen

Wall and base mounted units incorporating an inset single drainer sink unit with work surfaces. Cooker point, plumbing for automatic washing machine, space for domestic appliance, radiator, double glazed window to the rear elevation and door to conservatory.

First Floor Landing

Loft hatch and doors to;

Bedroom One

Double glazed bay window to the front elevation and radiator.

Bedroom Two

Double glazed window to the rear elevation and radiator.

Bedroom Three

Double glazed window to the front elevation and radiator.

Fitted Bathroom

Tiled, comprising bath with shower over, wash hand basin, toilet, heated towel rail and double glazed window to the rear elevation.

Outside

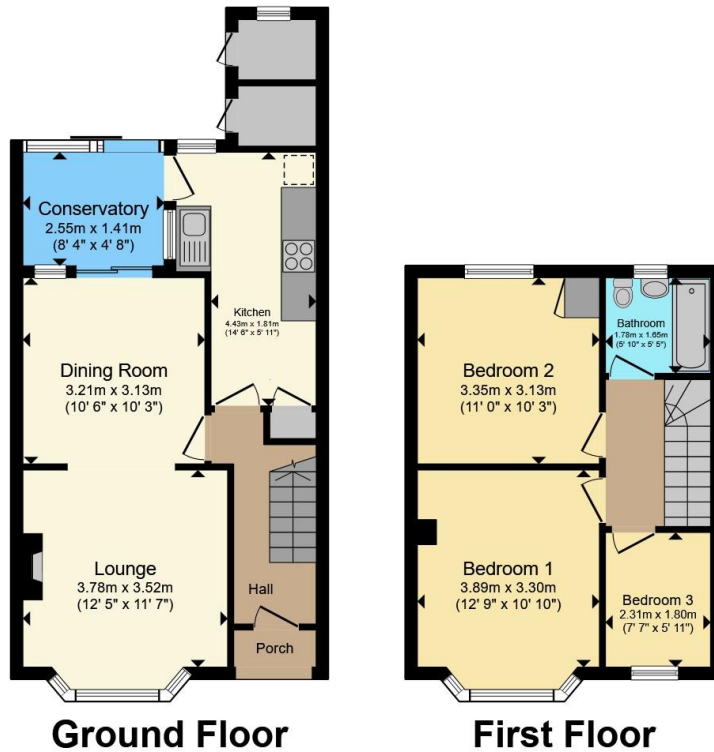
Front Of Property

Rear Garden

Lawned.

Garage





Total floor area 83.0 m² (893 sq.ft.) approx

This floor plan is for illustrative purposes only. It is not drawn to scale. Any measurements, floor areas (including any total floor area), openings and orientation are approximate. No details are guaranteed, they cannot be relied upon for any purpose and they do not form part of any agreement. No liability is taken for any error, omission or misstatement. A party must rely upon its own inspection(s). Powered by www.propertybox.io



To view this property please contact Connells on

T 02476 553 093
E coventry@connells.co.uk

38 New Union Street
 COVENTRY CV1 2HN

EPC Rating: Council Tax
 Awaited Band: B

view this property online connells.co.uk/Property/COV323844

Tenure: Freehold



1. MONEY LAUNDERING REGULATIONS Intending purchasers will be asked to produce identification documentation at a later stage and we would ask for your co-operation in order that there will be no delay in agreeing the sale. 2. These particulars do not constitute part or all of an offer or contract. 3. The measurements indicated are supplied for guidance only and as such must be considered incorrect. Potential buyers are advised to recheck measurements before committing to any expense. 4. We have not tested any apparatus, equipment, fixtures, fittings or services and it is in the buyers interest to check the working condition of any appliances.

Connells Residential is registered in England and Wales under company number 1489613, Registered Office is Cumbria House, 16-20 Hockliffe Street, Leighton Buzzard, Bedfordshire, LU7 1GN. VAT Registration Number is 500 2481 05.

See all our properties at www.connells.co.uk | www.rightmove.co.uk | www.zoopla.co.uk

Property Ref: COV323844 - 0004