



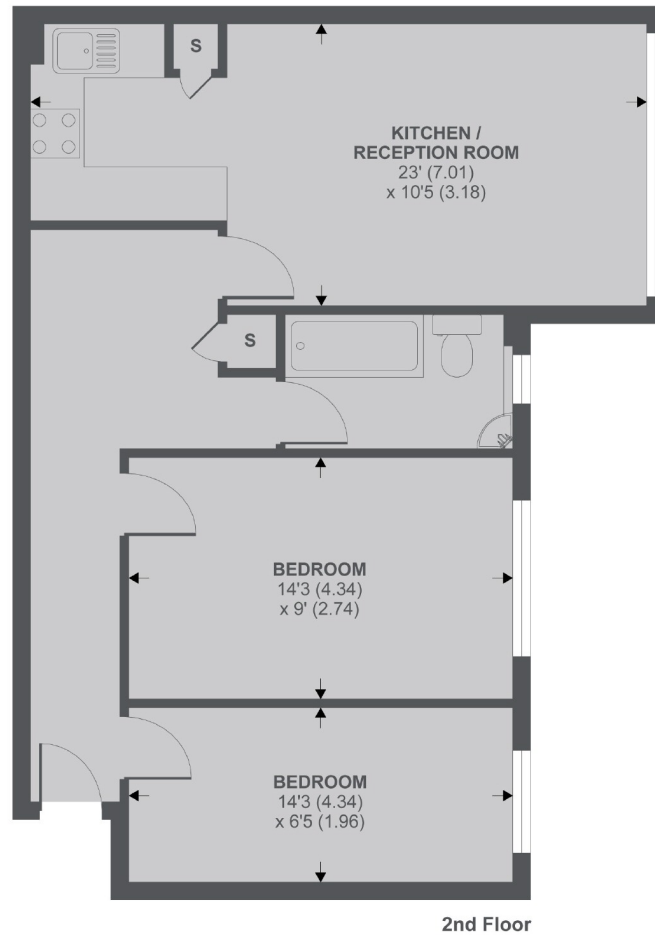
## New Park Road, SW2

**£1,400 PCM**

A spacious two bedroom second floor apartment, set in a well maintained purpose built block, ideal for a professional couple or two sharers.

- Second Floor Apartment
- Two Bedrooms
- Open Plan
- Communal Garden
- Furnished
- Close to Station

For further information on the costs associated with renting a property, please pop into our office or visit our website.



APPROX FLOOR AREA 617 SQ.FT 57.3 SQ.M

Copyright nichecom.co.uk 2019 REF : 489738

Jacksons Balham  
8-11 Balham Station Road  
London  
SW12 9SG  
020 8675 6565  
balham.lettings@jacksonsestateagents.com

Energy Rating: C We aim to make our particulars both accurate and reliable. However they are not guaranteed; nor do they form part of an offer or contract. If you require clarification on any points then please contact us, especially if you're traveling some distance to view. Please note that appliances and heating systems have not been tested and therefore no warranties can be given as to their good working order.