

Toothill, West Swindon

Guide Price £220,000

🛏 2 🚿 1 🚗 1

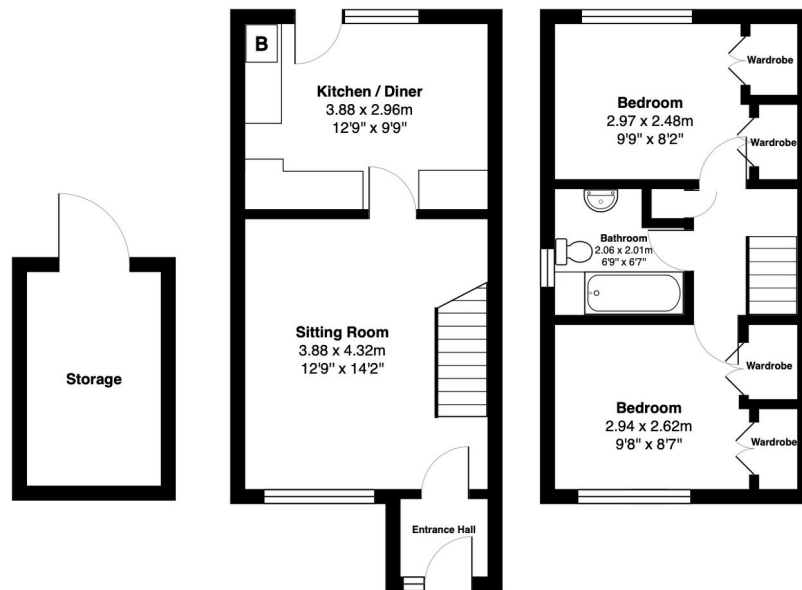


A beautifully presented two double bedroom home in the popular Toothill area of West Swindon, perfect for first-time buyers. Freshly decorated throughout with a new boiler, private driveway, and a generous rear garden, this move-in-ready property offers excellent access to local amenities, the M4, and Swindon town centre. Early viewing highly recommended!

Please quote REF : DW1575 on all enquiries

## Key Features

- Semi Detached House
- Two Spacious Double Bedrooms
- Newly Installed Boiler
- Generous Rear Garden
- No Chain
- Ideal First-Time Buyer Opportunity
- Freshly Decorated Throughout
- Private Driveway Parking
- Excellent Access to M4 & West Swindon Amenities
- Large Outside Storage With Power



Total Area: 59.6 m<sup>2</sup> ... 641 ft<sup>2</sup> (excluding storage)

All measurements are approximate and for display purposes only