



Grosvenor Terrace | London | SE5

Leasehold

£675,000

- Two double bedrooms
- Private garden
- Large windows
- Open plan living space
- Wooden floors
- Chain free
- Split level
- Permit parking
- Burgess Park
- Excellent transport routes

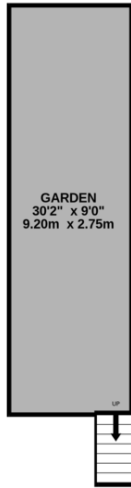


Gorgeous two bedroom, two bathroom split level maisonette with its own private garden, set on the quiet, tree-lined Grosvenor Terrace. Ideally positioned within easy walking distance of Kennington and Oval stations, with quick access to Camberwell Road for buses into the West End and the City. Entered via its own ground floor front door, stairs lead up to a bright first floor where the kitchen and living space have been opened up to create a generous, open-plan entertaining area, complete with brand new appliances. A modern family bathroom sits on this level. Upstairs, you'll find two well-proportioned double bedrooms, a further shower room and WC, plus useful landing storage. From the half landing, an external staircase leads down to the private rear garden. Finished to a high standard throughout, this is a well thought

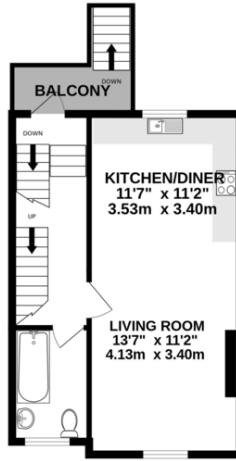


Score	Energy rating	Current	Potential
92+	A		
81-91	B		
69-80	C	69 C	79 C
55-68	D		
39-54	E		
21-38	F		
1-20	G		

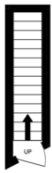
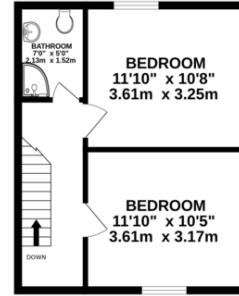
RAISED GROUND FLOOR
43 sq ft. (4.0 sq.m.) approx.



1ST FLOOR
452 sq ft. (42.0 sq.m.) approx.



2ND FLOOR
354 sq ft. (32.9 sq.m.) approx.



TOTAL FLOOR AREA: 849 sq.ft. (78.9 sq.m.) approx.

Whilst every attempt has been made to ensure the accuracy of the floorplan contained here, measurements of doors, windows, rooms and any other items are approximate and no responsibility is taken for any error, omission or mis-statement. This plan is for illustrative purposes only and should be used as such by any prospective purchaser. The services, systems and appliances shown have not been tested and no guarantee as to their operability or efficiency can be given.
Made with Metropix ©2026

Viewing Arrangements

Strictly by appointment

Contact Details

121 Denmark Hill

London

SE5 8EN

www.urbanvillagehomes.co.uk

sales@urbanvillagehomes.com

020 3519 9121

Agents Note: Whilst every care has been taken to prepare these sales particulars, they are for guidance purposes only. All measurements are approximate and for general guidance purposes only and whilst every care has been taken to ensure their accuracy, they should not be relied upon and potential buyers are advised to recheck the measurements