

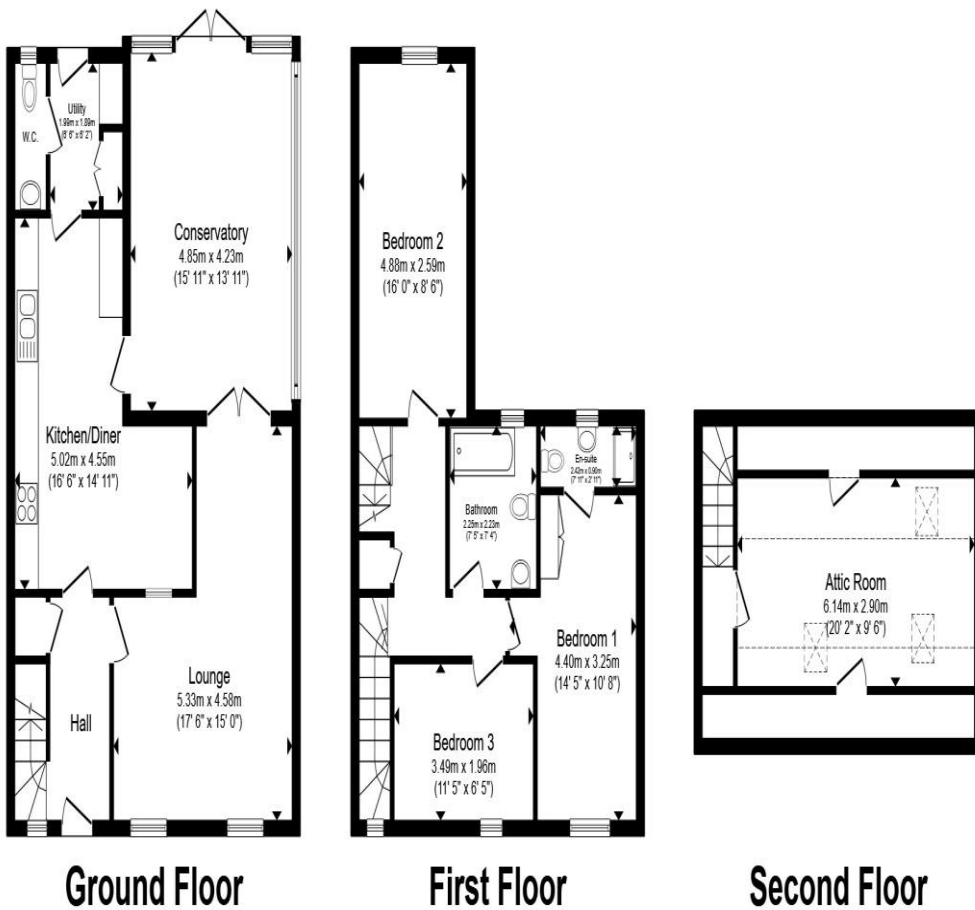


Ashbeach Drove, Ramsey Huntingdon PE26 2TG

welcome to
Ashbeach Drove, Ramsey Huntingdon

Spacious three-storey home with a large lounge, kitchen/diner, conservatory, utility room, W/C, three bedrooms and a versatile attic room. Just steps from Ashbeach Pre-School/Primary School and close to amenities and transport links. Ideal for families or investors.





Total floor area 146.4 m² (1,576 sq.ft.) approx

This floor plan is for illustrative purposes only. It is not drawn to scale. Any measurements, floor areas (including any total floor area), openings and orientation are approximate. No details are guaranteed, they cannot be relied upon for any purpose and they do not form part of any agreement. No liability is taken for any error, omission or misstatement. A party must rely upon its own inspection(s). Powered by www.propertybox.io



Entrance Hall

Lounge

17' 6" x 15' (5.33m x 4.57m)

Kitchen/Diner

16' 6" x 14' 11" (5.03m x 4.55m)

Conservatory

15' 11" x 13' 11" (4.85m x 4.24m)

Utility

6' 6" x 6' 2" (1.98m x 1.88m)

w/c

Bedroom One

14' 5" x 10' 8" (4.39m x 3.25m)

Ensuite Shower Room

7' 11" x 2' 11" (2.41m x 0.89m)

Bedroom Two

16' x 8' 6" (4.88m x 2.59m)

Bedroom Three

11' 5" x 6' 5" (3.48m x 1.96m)

Family Bathroom

7' 5" x 7' 4" (2.26m x 2.24m)

Attic

10' 2" x 9' 6" (3.10m x 2.90m)

welcome to

Ashbeach Drove, Ramsey Huntingdon

- No Onwards Chain
- Three Bedrooms
- Attic Room
- Off Road Parking
- Carport & Garage

Tenure: Freehold EPC Rating: Awaited
Council Tax Band: C

offers over

£300,000



Please note the marker reflects the
postcode not the actual property

check out more properties at williamhbrown.co.uk



Property Ref:
RSY106964 - 0005

1. MONEY LAUNDERING REGULATIONS Intending purchasers will be asked to produce identification documentation at a later stage and we would ask for your co-operation in order that there is no delay in agreeing the sale. 2. These particulars do not constitute part or all of an offer or contract. 3. The measurements indicated are supplied for guidance only and as such must be considered incorrect. Potential buyers are advised to recheck measurements before committing to any expense. 4. We have not tested any apparatus, equipment, fixtures or services and it is in the buyers interest to check the working condition of any appliances. 5. Where an EPC, or a Home Report (Scotland only) is held for this property, it is available for inspection at the branch by appointment. If you require a printed version of a Home Report, you will need to pay a reasonable production charge reflecting printing and other costs. 6. We are not able to offer an opinion either written or verbal on the content of these reports and this must be obtained from your legal representative. 7. Whilst we take care in preparing these reports, a buyer should ensure that his/her legal representative confirms as soon as possible all matters relating to title including the extent and boundaries of the property and other important matters before exchange of contracts.

William H Brown is a trading name of Sequence (UK) Limited which is registered in England and Wales under company number 4268443, Registered Office is Cumbria House, 16-20 Hockliffe Street, Leighton Buzzard, Bedfordshire, LU7 1GN. VAT Registration Number is 500 2481 05.


william h brown



01487 815555



ramsey@williamhbrown.co.uk



17A Great Whyte, Ramsey, HUNTINGDON,
Cambridgeshire, PE26 1HG



williamhbrown.co.uk