

Adam Hayes - North Finchley Office - Lettings 365 Ballards Lane, North Finchley, London, N12 8LL

Tel: 020 8445 4008 Email: [info@adam-hayes.co.uk](mailto:info@adam-hayes.co.uk) Web: [www.adam-hayes.co.uk](http://www.adam-hayes.co.uk)

# High Road, North Finchley, N12

## OIEO £285,000

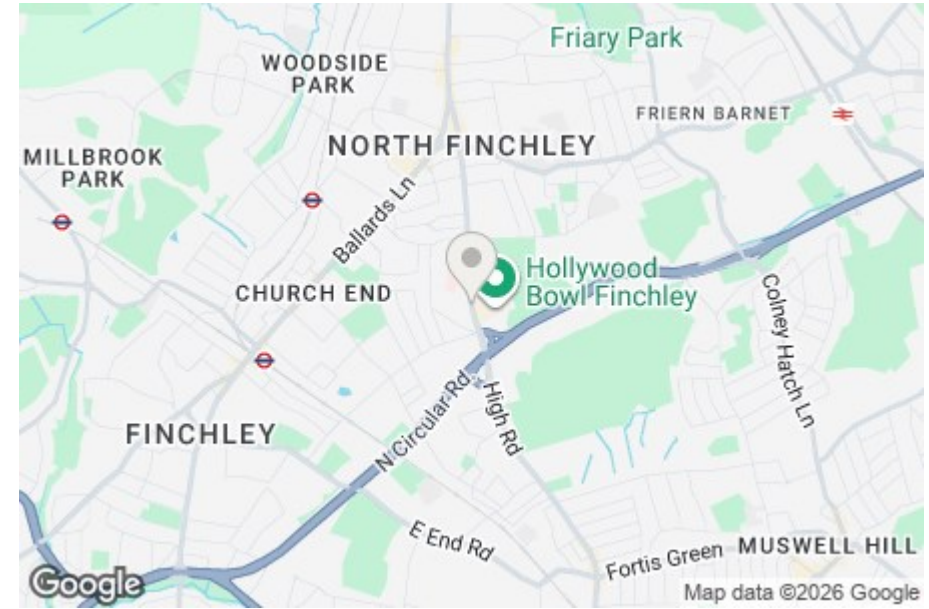
 1 Bedrooms  1 Bathrooms  1 Receptions

### Key Features

- One Bedroom
- First Floor Apartment
- Modern Kitchen
- Chain Free
- Communal Gardens
- Secure Gated Allocated Parking

### Other Information

Tenure: Leasehold  
Length of Lease: 134 Years  
Ground Rent: £316.00 P/A  
Service Charge: £1,200.00 P/A  
Council Tax Band: D

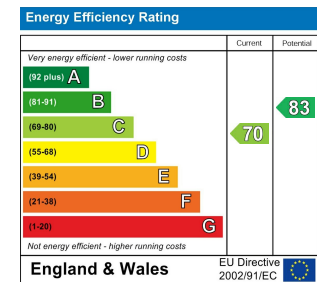


### Nearest Stations

West Finchley Station 0.7 miles  
Finchley Central Station 0.8 miles  
Woodside Park Station 1.1 miles

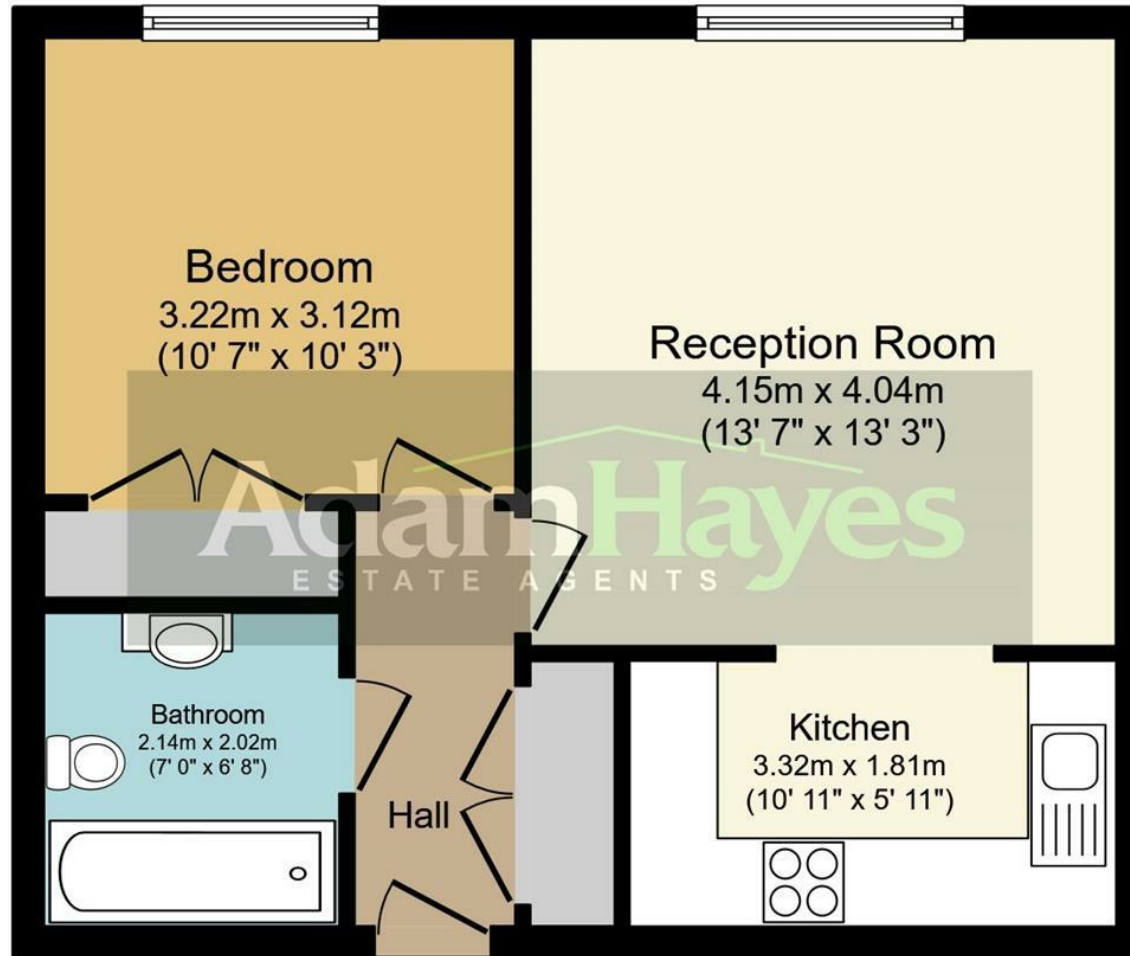
### Property Description

A beautiful one bedroom first floor purpose-built lift serviced apartment set back off North Finchley High Road, within easy access to multiple shopping and transport facilities, East Finchley Tube Station and the A406. The property benefits from a modern fitted kitchen with integrated appliances, gated allocated parking, double glazing and a three piece bathroom suite. To really appreciate the size, location and condition an internal viewing is highly recommended!!!



Adam Hayes - North Finchley Office - Lettings 365 Ballards Lane, North Finchley, London, N12 8LL

Tel: 020 8445 4008 Email: info@adam-hayes.co.uk Web: www.adam-hayes.co.uk



## Floor Plan

Total floor area 44.4 sq.m. (477 sq.ft.) approx

This plan is for illustration purposes only and may not be representative of the property. Plan not to scale.

These particulars, whilst believed to be accurate, are set out as a general outline only for guidance and do not constitute any part of an offer or contract. Intending purchasers or prospective tenants should not rely on them as statements or representation of fact, but must satisfy themselves by inspection or otherwise as to their accuracy. We have not carried out a detailed survey, not tested the services, appliances and specific fittings. Room sizes should not be relied upon for carpets and furnishings. The measurements given are approximate. No person in this firm's employment has the authority to make or give any representation or warranty in respect of the property.