



28 Colteridge Grove, Beverley  
£230,000

# 28 Collieridge Grove

Beverley

Très Chic and full of personality, this beautifully reimagined three-bedroom home offers flexible open-plan living, a stunning new conservatory and landscaped gardens. A stylish Beverley gem designed for modern family life and effortless entertaining.

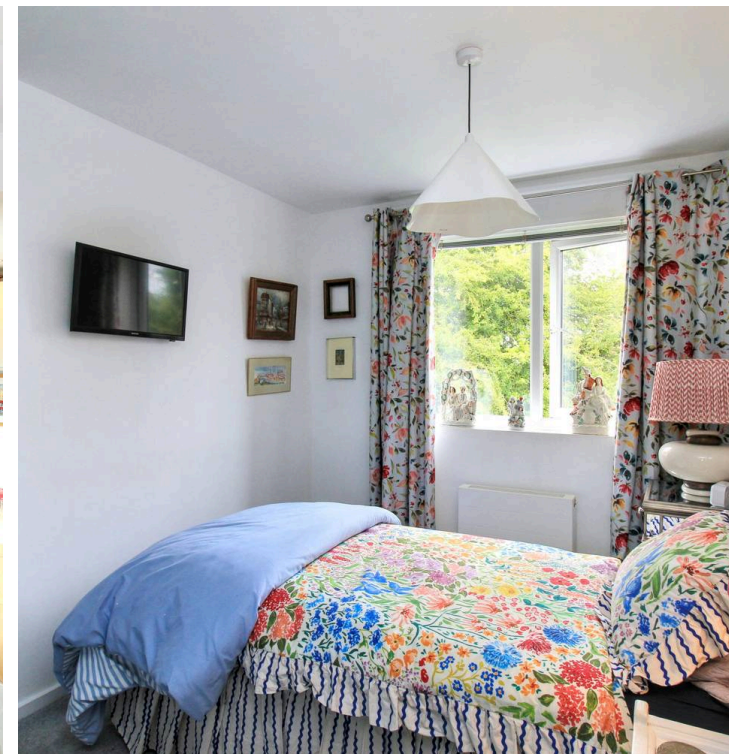
Council Tax band: C

Tenure: Freehold

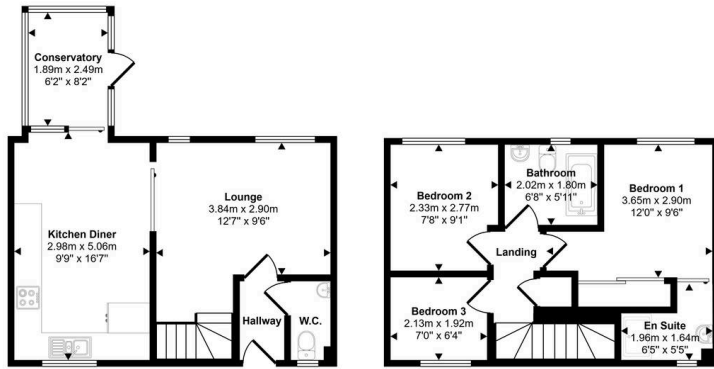
EPC Energy Efficiency Rating: C

EPC Environmental Impact Rating: C

- High Spec Finish Throughout
- Dedicated Off Street Parking
- Fabulous Versatile Entertaining Space
- Newly Built Conservatory
- Private, Beautiful Garden
- Modern Bathrooms



Approx Gross Internal Area  
73 sq m / 783 sq ft



Ground Floor  
Approx 39 sq m / 422 sq ft

First Floor  
Approx 34 sq m / 361 sq ft

Whilst every attempt has been made to ensure the accuracy of the floor plan contained here, measurements of doors, windows, rooms and any other items are approximate and no responsibility is taken for any error, omission, or mis-statement. The measurements should not be relied upon for valuation, transaction and/or funding purposes. This plan is for illustrative purposes only and should be used as such by any prospective purchaser or tenant.





## Aspire Estates

Aspire Properties, Wira Business Park Ring Road - LS16 6EB

0113 8875079

[estatesales@aspirepropertygroup.co.uk](mailto:estatesales@aspirepropertygroup.co.uk)

[www.aspirepropertygroup.co.uk/](http://www.aspirepropertygroup.co.uk/)