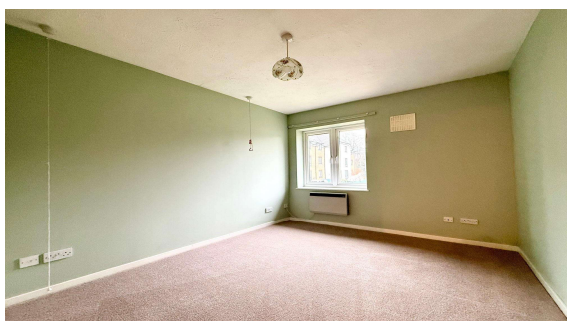




**Orchid Court, Egham, TW20 9HA**

**£145,000 Share of Freehold**



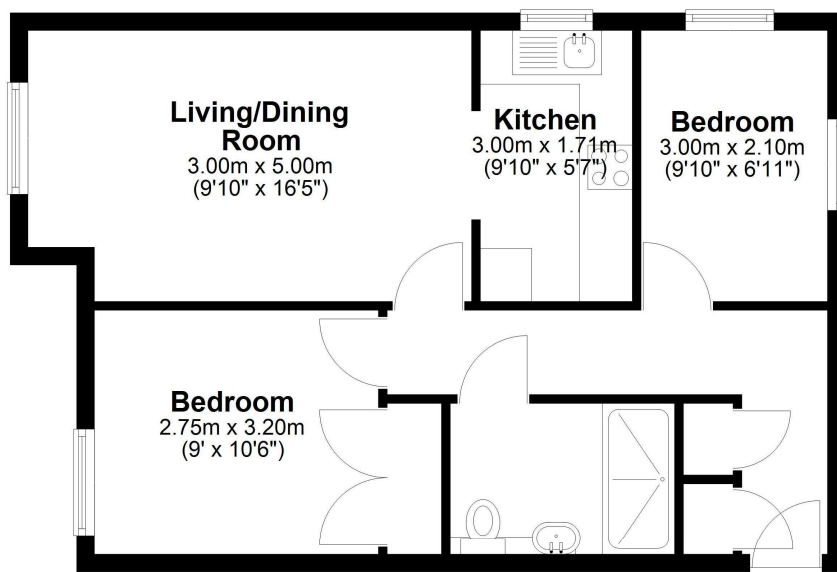
Situated within the beautiful grounds of Orchid Court retirement living is this first floor two bedroom apartment overlooking the gardens to the rear. This property comprises fully fitted kitchen, spacious lounge and shower room. Located at the end of this block, this apartment offers more privacy with no neighbours either side, letting in extra natural light. Egham High Street and train station are within a few minutes walk, in addition to the bus stop located next to the development. Over 55's Only. No chain.

## Orchid Court, Albany Place Egham, Surrey, TW20 9HA

### FLOOR PLAN

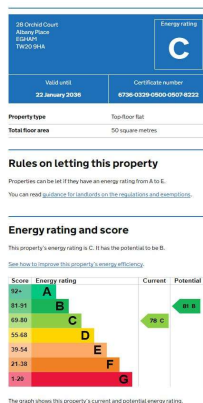
#### **First Floor**

Approx. 50.3 sq. metres (541.5 sq. feet)



Total area: approx. 50.3 sq. metres (541.5 sq. feet)

### EPC



#### COUNCIL TAX BAND:

#### LEASE:

#### SERVICE CHARGE:

#### VIEWINGS:

**D** - Runnymede Borough Council  
999 Years from 2015 (awaiting written confirmation)  
£3,500 per annum (awaiting written confirmation)

By appointment with the clients selling agents,  
Nevin & Wells Residential on 01784 437 437 or visit  
[www.nevinandwells.co.uk](http://www.nevinandwells.co.uk)



All measurements are approximate. Nevin & Wells Residential have not tested any systems or appliances.