

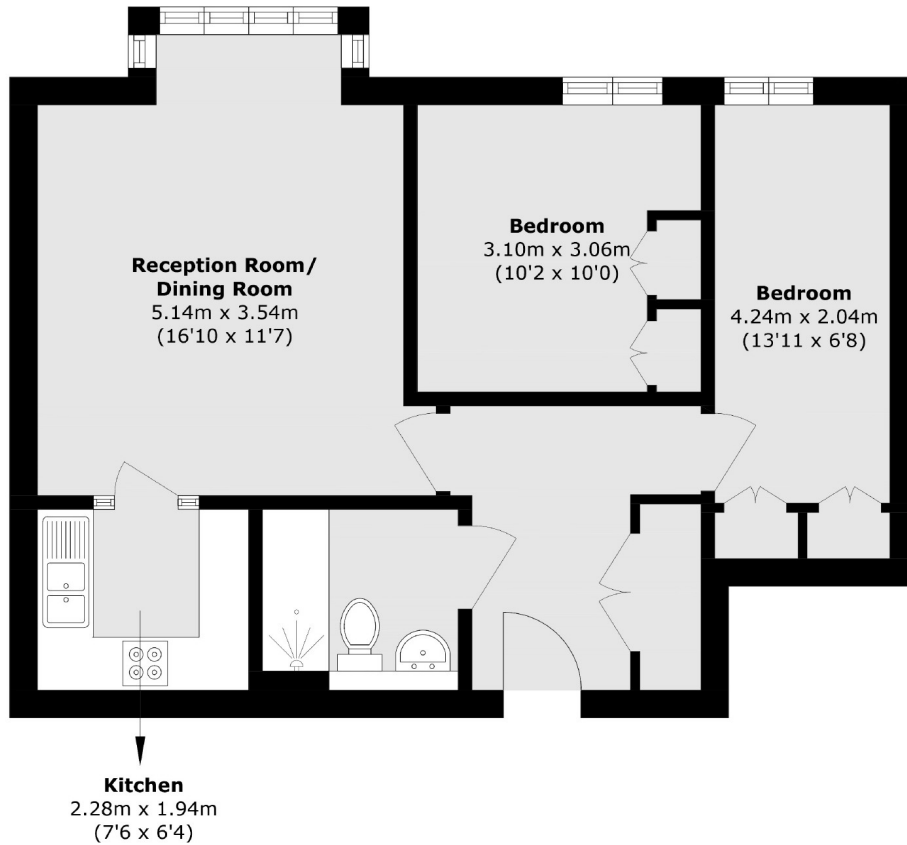


## Beechwood Grove, W3

£275,000

A top floor two bedroom retirement flat moments from Acton Park. The property is for overs 55's, has access to communal gardens, a communal lounge, a guest suite for friends and family and residents parking.

Beechwood Grove is within half a mile of both East Acton and Acton Central stations as well as the shops and amenities of Churchfield Road.



Total area (approx.): 56.7 sq. m (610.3 sq. ft)

Robertson Smith & Kempson Acton Sales  
137 High Street, Acton,  
London, W3 6LY  
020 8896 3996  
[actonsales@robertsonsmithandkempson.co.uk](mailto:actonsales@robertsonsmithandkempson.co.uk)

Energy Rating: D. We aim to make our particulars both accurate and reliable. However they are not guaranteed; nor do they form part of an offer or contract. If you require clarification on any points then please contact us, especially if you're traveling some distance to view. Please note that appliances and heating systems have not been tested and therefore no warranties can be given as to their good working order.