



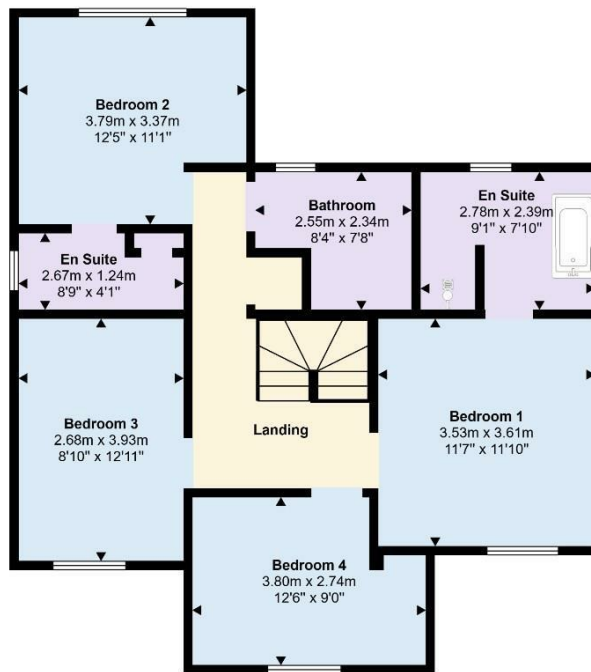
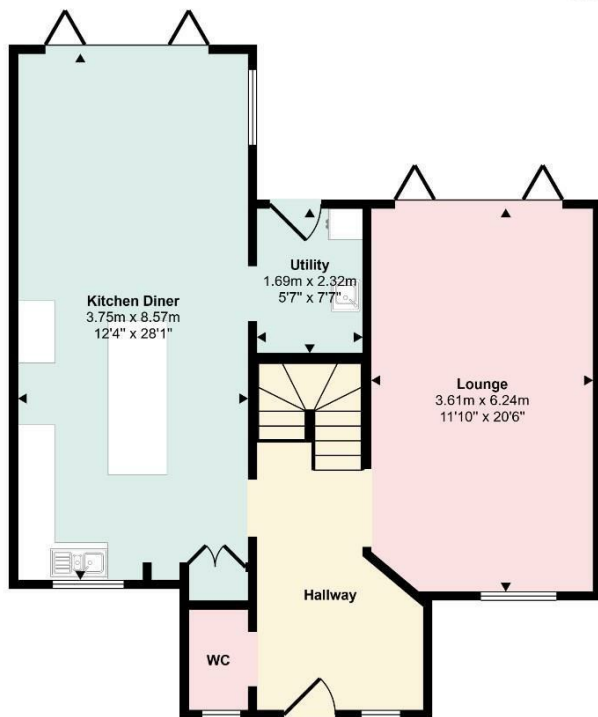
PLOT 5 FOREST ROAD NORTHAMPTON, NN7 2HE

£625,000
FREEHOLD

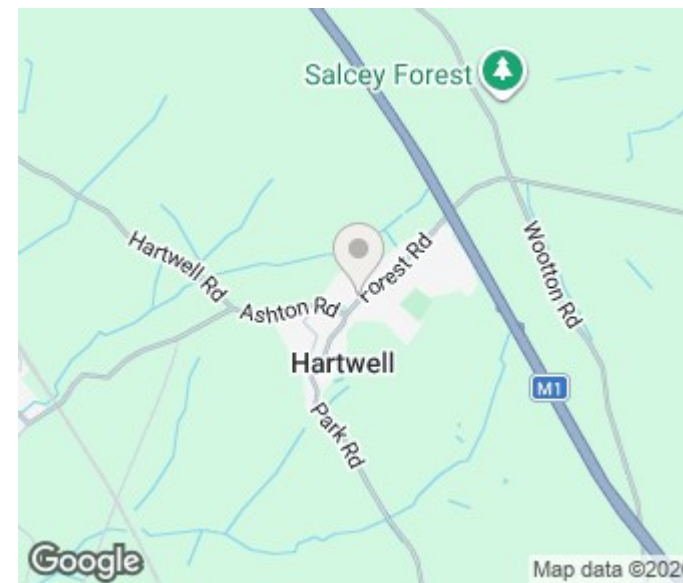
Stonhills are pleased to offer this high specification four double bedroom detached new build home, extending to just over 1,600 sq ft and forming part of an exclusive development of just three properties in the sought-after village of Hartwell. The accommodation includes a stunning kitchen/dining room with integrated appliances and bi-fold doors, lounge with bi-folds, utility room and WC, with four double bedrooms, two ensembles and a family bathroom. The property also benefits from a rear garden, off road parking and a single garage, with completion anticipated May/June. Please contact the office to arrange an appointment.

 **stonhills**
LAND & ESTATE AGENTS

Approx Gross Internal Area
149 sq m / 1609 sq ft



This floorplan is only for illustrative purposes and is not to scale. Measurements of rooms, doors, windows, and any items are approximate and no responsibility is taken for any error, omission or mis-statement. Icons of items such as bathroom suites are representations only and may not look like the real items. Made with Made Snappy 360.



| Energy Efficiency Rating | | |
|---|----------------------------|-----------|
| | Current | Potential |
| Very energy efficient - lower running costs | | |
| (92 plus) A | | |
| (81-91) B | | |
| (69-80) C | | |
| (55-68) D | | |
| (39-54) E | | |
| (21-38) F | | |
| (1-20) G | | |
| Not energy efficient - higher running costs | | |
| England & Wales | EU Directive 2002/91/EC | |

Agents Note: Whilst every care has been taken to prepare these particulars, they are for guidance purposes only. All measurements are approximate and are for general guidance purposes only and whilst every care has been taken to ensure their accuracy, they should not be relied upon and potential buyers/tenants are advised to recheck the measurements

Northampton Office Sales
39 St Giles Street
Northampton
Northamptonshire
NN1 1JF

01604 624424
lewis@stonhills.co.uk
<https://www.stonhills.co.uk/>

