



OVER 60?

Secure this property
for up to **59% less!**

Price

£230,000

Leasehold

1x 🏠 1x ↻ 1x 🚗

**Whytecliffe Road South,
Purley, Surrey, CR8**

cubitt & west
Helping you move forwards



Main features

- Modern third floor apartment with balcony and communal garden
- Open plan kitchen/living room with double doors to balcony
- Good size double bedroom & stylish bathroom
- Opposite Purley station and walking distance to cafe's, bars, restaurants and Tesco Supermarket

Accommodation

THIRD FLOOR

Hallway

Kitchen/Living Room: 17'5 x 13'4
(5.31m x 4.07m)

Balcony

Bedroom: 17'3 x 8'6 (5.26m x 2.59m)

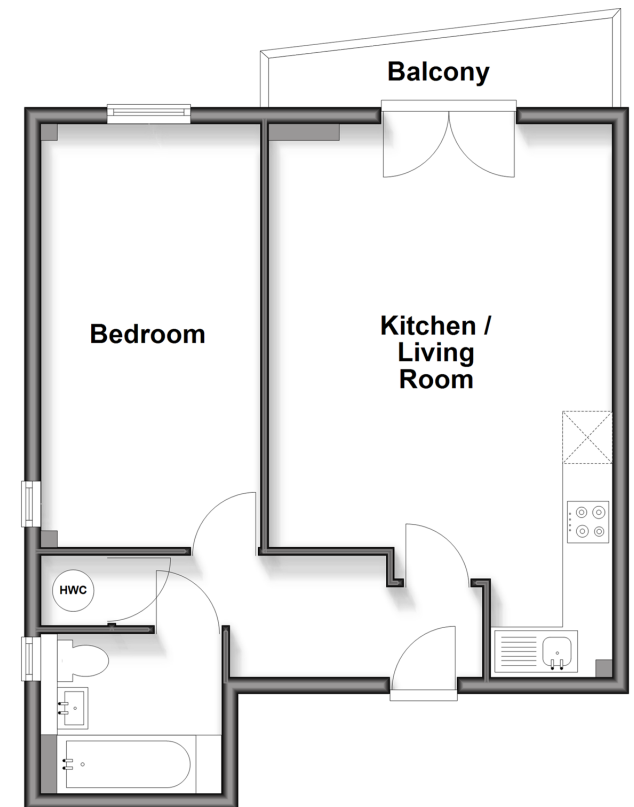
Bathroom

OUTSIDE

Communal Garden

Third Floor

Approx. 48.9 sq. metres (526.7 sq. feet)



Call Purley - 020 8660 8882 ■ cubittandwest.co.uk

- Legal advice should be taken to verify fixtures/fittings, planning, alterations and/or lease details
- Appliances & services are untested, dimensions are approximate and floor plans are not to scale
- Through a Homewise Home For Life Plan people aged 60+ can secure this property for up to 50% less, by purchasing a Lifetime Lease.



21511635/20250923/NH/NH