



HEARTWOOD
HOMES

Langley Grove, Sandridge, St. Albans, AL4 9DZ

Offers Over £350,000

🛏️ 2 🚿 1 🚗 1



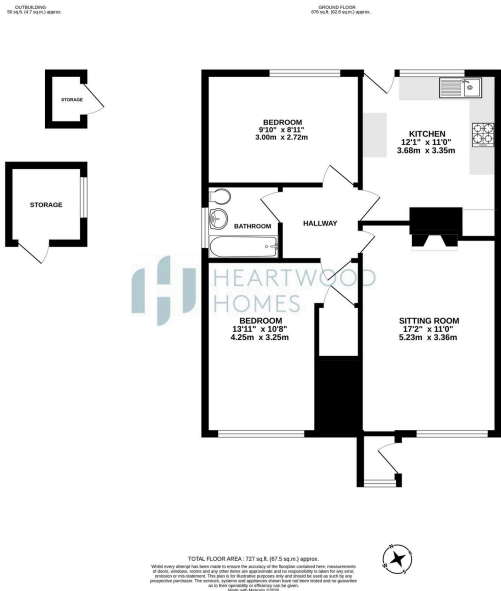
This attractive residence is set in a highly desirable semi-rural village location on the edge of beautiful Hertfordshire countryside, combining peaceful village living with excellent access to local amenities and transport. The home offers well-proportioned accommodation ideal for families or professionals looking for a comfortable and versatile living space in a sought-after community.

Inside, the property benefits from a bright and spacious living area that flows through to a well-appointed kitchen/breakfast room, creating a welcoming social heart perfect for everyday life and entertaining. There are two generous double bedrooms and a family bathroom, offering comfortable sleeping quarters and flexibility for guests or a home office.

Externally, an enclosed rear garden provides a private outdoor space for al fresco dining, gardening or play, while 2 brick-built storage sheds add useful storage.

Residents enjoy the charm of village life with a selection of traditional pubs, a village shop and local tea rooms, as well as highly regarded schooling within easy reach. For outdoor enthusiasts, extensive woodland and countryside walks in Heartwood Forest are right on the doorstep, and the nearby city centre offers a wider range of shops, cafes and excellent rail links into central London.





- Attractive residence in a highly desirable semi-rural village location on the edge of Hertfordshire countryside.
- Well proportioned accommodation ideal for families or professionals seeking versatile living spaces and a family bathroom providing flexible living areas.
- Two single built storage sheds for additional practical storage.
- Easy access to extensive countryside walks in Heartwood Forest and nearby city centre with shops, cafes, and excellent rail links into central London.
- Combines peaceful village living with excellent access to local amenities and transport links.
- Bright and spacious living area flowing into a well-appointed kitchen/breakfast room, perfect for socializing and entertaining.
- Close to village amenities including traditional pubs, a shop, tea rooms, and highly regarded schools.

