



A three bedroom two bathroom town house in a convenient location  
Ashurst Close, Northwood, Middlesex HA6 1EL



**Asking Price: £2,550 pcm**

## **A three bedroom two bathroom town house in a convenient location**

Ashurst Close, Northwood, Middlesex HA6 1EL

---

• ENTRANCE HALLWAY • GUEST CLOAKROOM/UTILITY ROOM • KITCHEN • LIVING ROOM • MASTER BEDROOM WITH ENSUITE SHOWER ROOM • THREE BEDROOMS • FAMILY BATHROOM • GARAGE • GARDEN • UNFURNISHED

---

### **Description**

A three bedroom two bathroom town house offered in excellent condition throughout benefitting it's own low maintenance private garden, modern fitted kitchen and contemporary decor throughout.

\*\* An advance reservation payment of one weeks rent is required to secure the property \*\*

### **Location**

Northwood provides a range of shopping facilities including Waitrose supermarket, a variety of restaurants and other amenities with the Metropolitan Line station providing access to Baker Street and the City. There is a plethora of state and private schooling together with a wide choice of recreational facilities, which include golf courses and fitness centres. The M1, M40 and M25 motorways are also accessible.





**Additional Information**

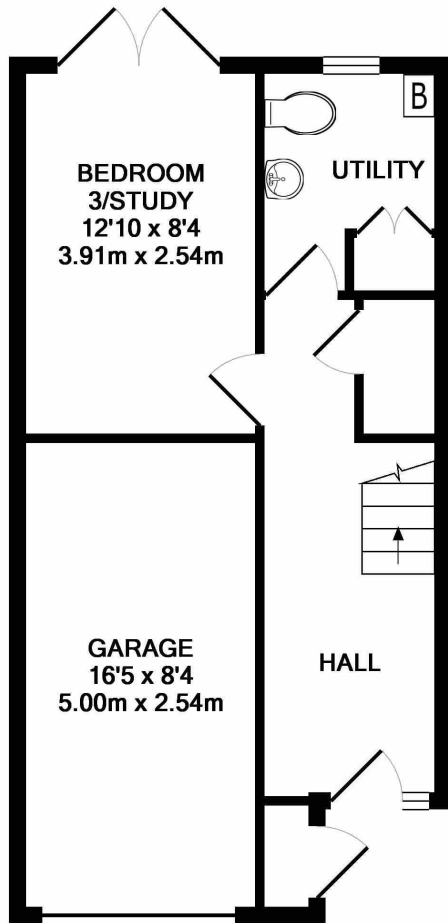
- Local Authority: London Borough of Hillingdon
- Council Tax Band: F
- Deposit Amount: £2,942.00
- Reservation Payment: One weeks rent
- Energy Efficiency Rating: Band D
- Available Date: 10/07/2026

Energy Efficiency Rating		Environmental Impact (CO <sub>2</sub> ) Rating			
	Current	Potential		Current	Potential
Very energy efficient - lower running costs			Very environmentally friendly - lower CO <sub>2</sub> emissions		
(92-100) <b>A</b>			(92-100) <b>A</b>		
(81-91) <b>B</b>		88	(81-91) <b>B</b>		89
(69-80) <b>C</b>			(69-80) <b>C</b>		
(55-68) <b>D</b>	68		(55-68) <b>D</b>	65	
(39-54) <b>E</b>			(39-54) <b>E</b>		
(21-38) <b>F</b>			(21-38) <b>F</b>		
(1-20) <b>G</b>			(1-20) <b>G</b>		
Not energy efficient - higher running costs			Not environmentally friendly - higher CO <sub>2</sub> emissions		
<b>England &amp; Wales</b>		EU Directive 2002/91/EC	<b>England &amp; Wales</b>		EU Directive 2002/91/EC

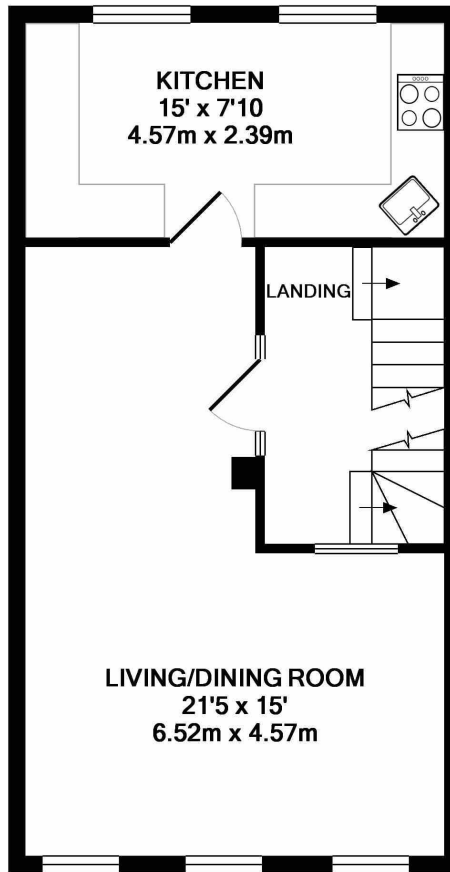
The energy efficiency rating is a measure of the overall efficiency of a home. The higher the rating the more energy efficient the home is and the lower the fuel bills will be.

The environmental impact rating is a measure of a home's impact on the environment in terms of carbon dioxide (CO<sub>2</sub>) emissions. The higher the rating the less impact it has on the environment.

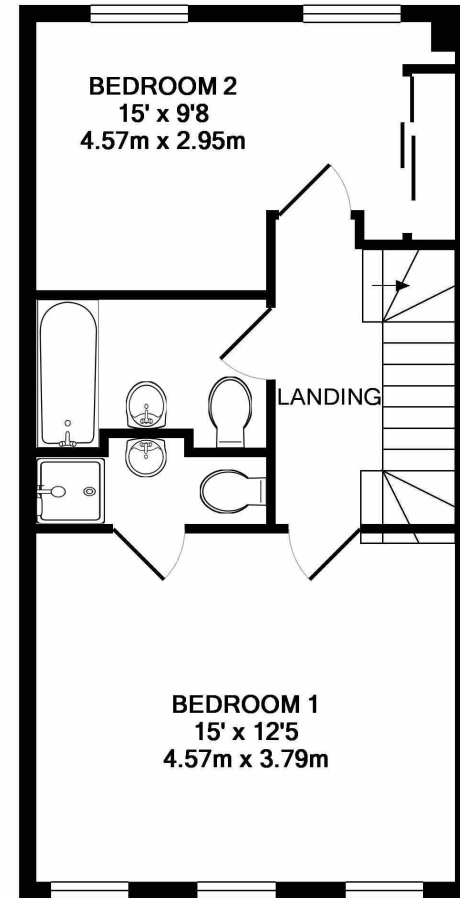




GROUND FLOOR  
APPROX. FLOOR  
AREA 411 SQ.FT.  
(38.2 SQ.M.)



1ST FLOOR  
APPROX. FLOOR  
AREA 437 SQ.FT.  
(40.6 SQ.M.)



2ND FLOOR  
APPROX. FLOOR  
AREA 451 SQ.FT.  
(41.9 SQ.M.)

TOTAL APPROX. FLOOR AREA 1299 SQ.FT. (120.7 SQ.M.)

Whilst every attempt has been made to ensure the accuracy of the floor plan contained here, measurements of doors, windows, rooms and any other items are approximate and no responsibility is taken for any error, omission, or mis-statement. This plan is for illustrative purposes only and should be used as such by any prospective purchaser. The services, systems and appliances shown have not been tested and no guarantee as to their operability or efficiency can be given

Made with Metropix ©2017



REGISTERED OFFICE 2-4 PACKHORSE ROAD, GERRARDS CROSS, BUCKINGHAMSHIRE, ENGLAND, SL9 7QE. COMPANY NO. 07557114. VAT NO. GB211239453