

AVAILABLE



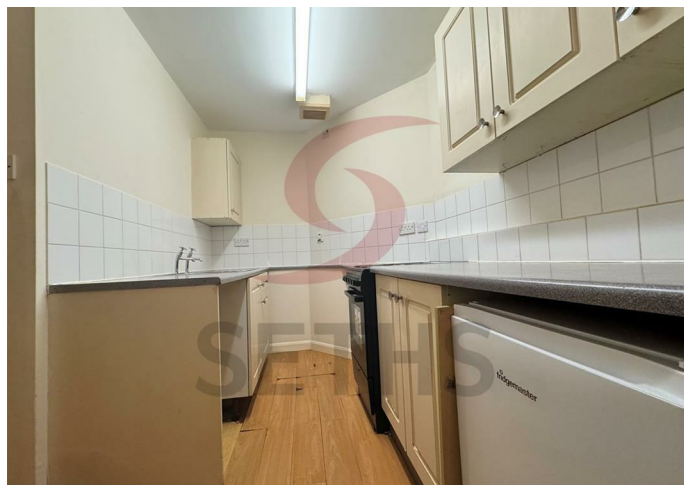
Apartment

EAST BOND STREET LEICESTER LE1 4SX

£645 Per Month

FEATURES

- City Centre
- Fitted Kitchen
- Transport Links
- One Bedroom Apartment
- Fitted Bathroom
- Local Amenities



 **SETHS**

1 Bedroom Apartment located in Leicester

****No Deposit Option Available****

In the vibrant heart of the City Centre, this charming one-bedroom apartment offers an ideal lifestyle for those seeking convenience and connectivity. Perfectly positioned within walking distance of the train and bus stations, and just moments from an array of shops, offices, and bars, the location caters effortlessly to both work and leisure.

Accessed through a secure front gate with an entry code, the apartment welcomes you into a spacious living area that provides a comfortable setting to relax or entertain. The adjoining kitchen is fitted with a range of wall and base units, offering practical storage and functionality. The generously sized double bedroom provides a peaceful retreat, while the fitted bathroom is complete with a bath, WC, and wash basin.

With electric heating throughout, this apartment combines comfort and practicality in a highly desirable urban setting an excellent opportunity for city living.

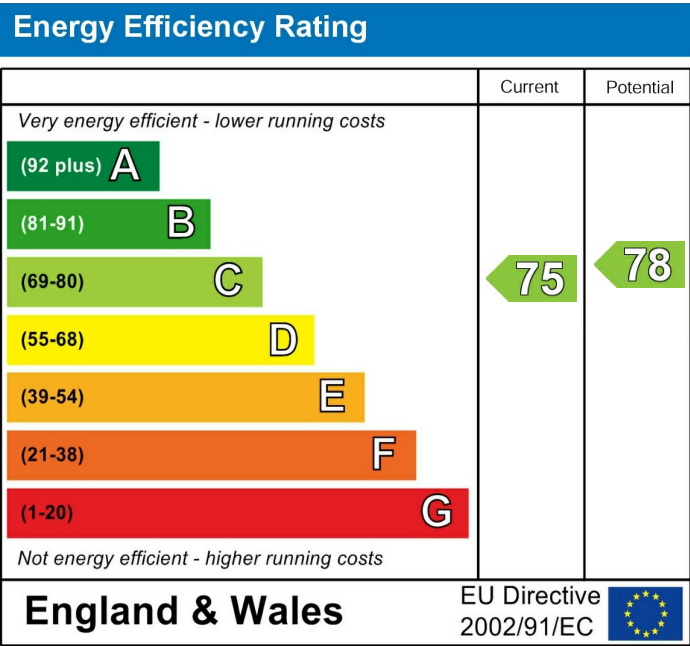
Rent: £645PCM
Security Deposit: £740
Tenancy Length: 12 Months
Council Tax Band: A
Pets may be considered at the landlord's discretion and will be subject to a higher rent.



Call us on
0116 266 9977

let@seths.co.uk
www.seths.co.uk

Council Tax Band
A



Agents Note: Whilst every care has been taken to prepare these particulars, they are for guidance purposes only. All measurements are approximate and are for general guidance purposes only and whilst every care has been taken to ensure their accuracy, they should not be relied upon and potential buyers are advised to recheck the measurements.

