

**MANOR**

28 BROOK HILL  
WOODSTOCK | OX20 1JE



A three bedroom detached bungalow, conveniently situated in the highly sought after Woodstock location, benefiting from easy access into the town where day to day amenities can be enjoyed.

The property boasts many benefits, including a recently fitted lift situated in the garage, which transports you to the garden level perfect for those who value ease of mobility.

Accommodation comprises an entrance hall with well balanced living accommodation throughout. The main reception benefits from sliding doors opening onto the south facing rear garden. You will find a useful study, and a fitted kitchen that offers a great outlook over the Glyme Valley

3



2



2



D







There are three bedrooms, one of which benefits from en suite facilities. The current owners use one of the bedrooms as a dining room, giving flexible use across two reception spaces.

Subject to the relevant planning permissions and factoring in neighbouring properties, this property holds excellent potential for conversion.

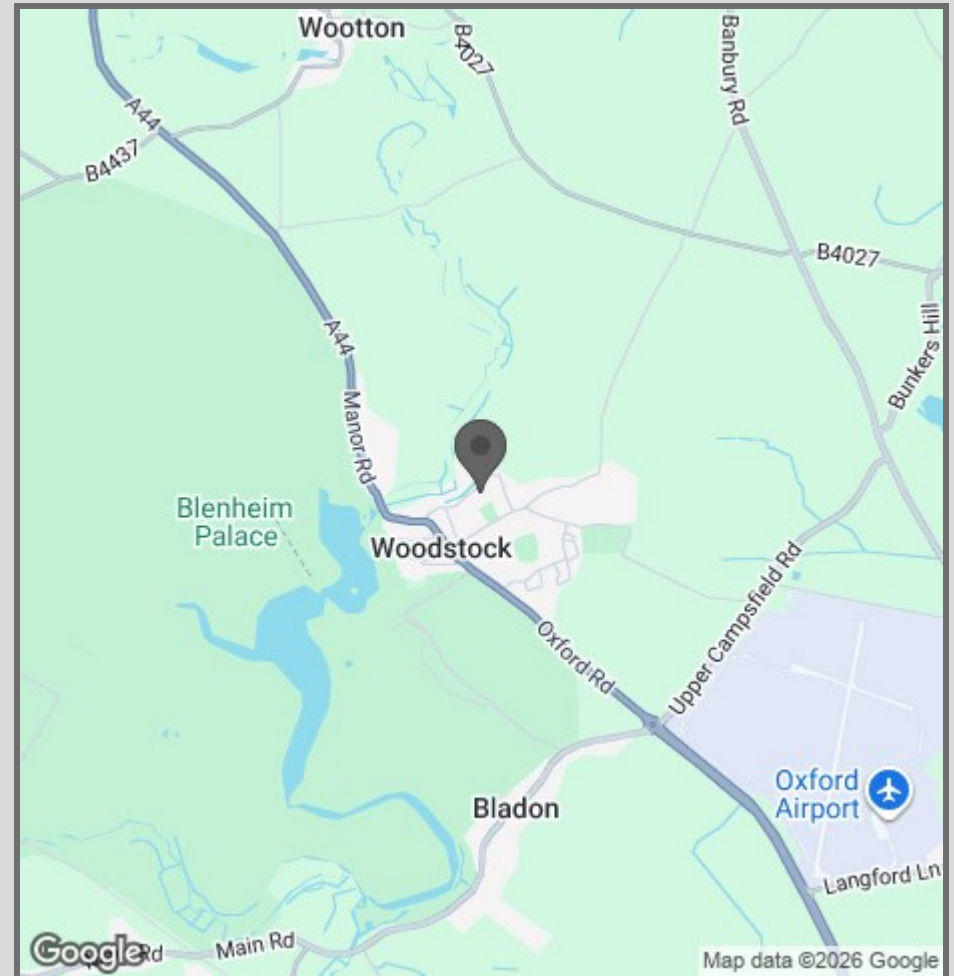
Externally, the property sits on a plot of approximately a third of an acre, offering mature front and rear landscaped gardens along with a useful workshop with power.

Further benefits include a detached garage, ample off-road parking, and convenient rear access onto Bear Close.





- Detached Bungalow
- Ample Private Parking
- Detached Garage
- Three Bedrooms
- South Facing Garden
- Workshop
- Mobility Friendly Lift - Built Into Garage
- Generous Plot Size
- Highly Favourable Location



42 High Street  
Woodstock  
OX20 1TG

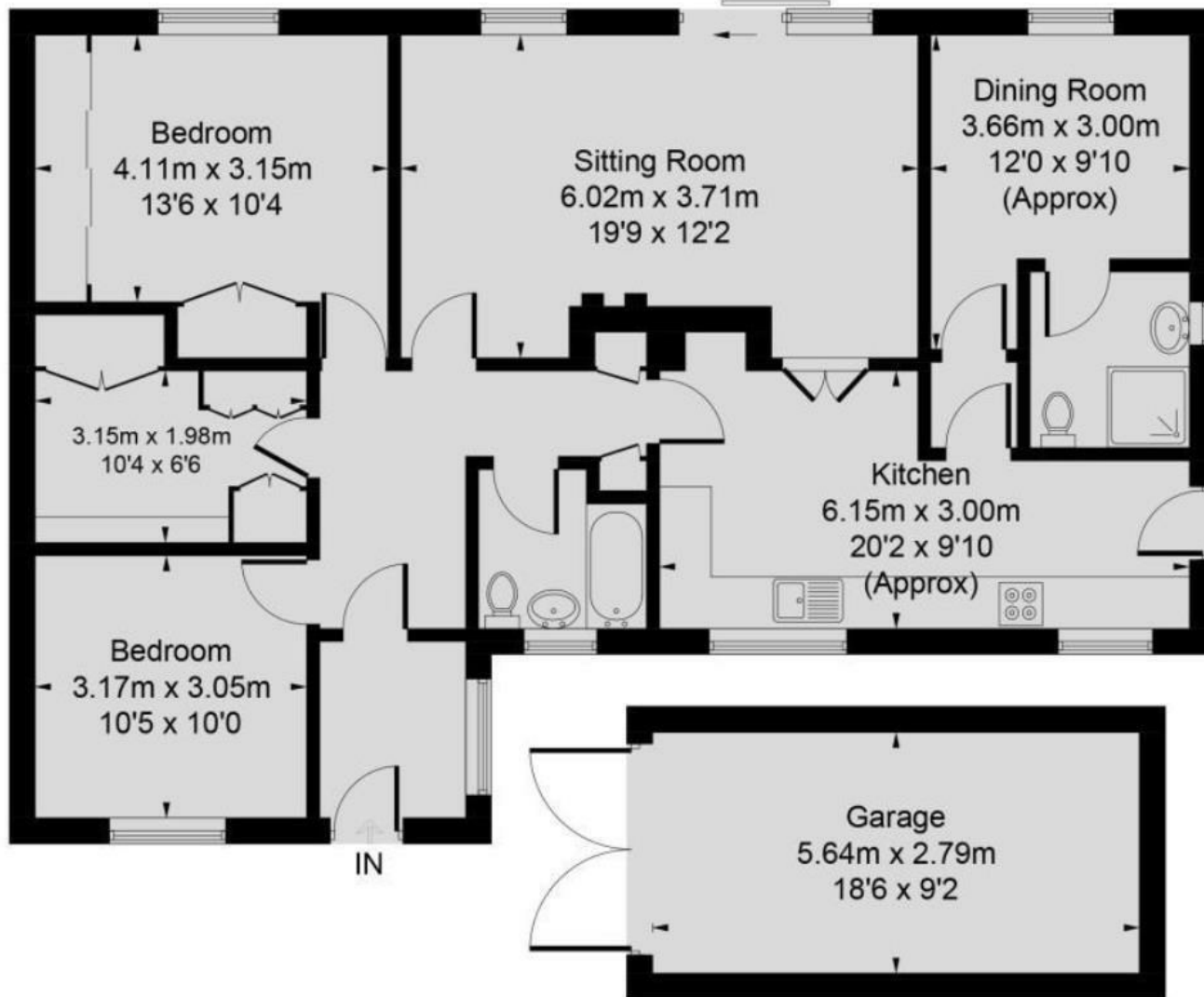
01865 955500

hello@manoroxford.com

www.manoroxford.com

MANOR

Approximate Gross Internal Area = 103.9 sq m / 1118 sq ft  
Garage = 16.2 sq m / 174 sq ft  
Total = 120.1 sq m / 1292 sq ft



(Not Shown In Actual Location / Orientation)



**MANOR**