



Connells

Flat 4 Ebrington Street
Plymouth



Property Description

An opportunity to acquire this two bedroom top floor apartment, situated in the heart of Plymouth. Close to a host of local amenities such as shops and restaurants and is a stone's throw away from the waterfront, Plymouth Hoe, Barbican, University and main transport links.

As you enter this apartment, you will find a bright open-plan kitchen, lounge and dining room with the kitchen space offering modern matching wall and base units, two spacious double bedrooms both benefiting from built-in wardrobe space and bathroom comprising bath with overhead shower, hand basin and W.C.

This property is an attractive opportunity for a first-time buyer or investment, appealing to a wide range of buyers.

BOOK YOUR VIEWINGS NOW!

An opportunity to acquire this two bedroom top floor apartment, situated in the heart of Plymouth. Close to a host of local amenities such as shops and restaurants and is a stone's throw away from the waterfront, Plymouth Hoe, Barbican, University and main transport links.

As you enter this apartment, you will find a bright open-plan kitchen, lounge and dining room with the kitchen space offering modern matching wall and base units, two spacious double bedrooms both benefiting from built-in wardrobe space and bathroom comprising bath with overhead shower, hand basin and

W.C.

This property is an attractive opportunity for a first-time buyer or investment, appealing to a wide range of buyers.

BOOK YOUR VIEWINGS NOW!

An opportunity to acquire this two bedroom top floor apartment, situated in the heart of Plymouth. Close to a host of local amenities such as shops and restaurants and is a stone's throw away from the waterfront, Plymouth Hoe, Barbican, University and main transport links.

As you enter this apartment, you will find a bright open-plan kitchen, lounge and dining room with the kitchen space offering modern matching wall and base units, two spacious double bedrooms both benefiting from built-in wardrobe space and bathroom comprising bath with overhead shower, hand basin and W.C.

This property is an attractive opportunity for a first-time buyer or investment, appealing to a wide range of buyers.

BOOK YOUR VIEWINGS NOW!

An opportunity to acquire this two bedroom top floor apartment, situated in the heart of Plymouth. Close to a host of local amenities such as shops and restaurants and is a stone's throw away from the waterfront, Plymouth Hoe, Barbican, University and main

transport links.

As you enter this apartment, you will find an bright open-plan kitchen, lounge and dining room with the kitchen space offering modern matching wall and base units, two spacious double bedrooms both benefiting from built-in wardrobe space and bathroom comprising bath with overhead shower, hand basin and W.C.

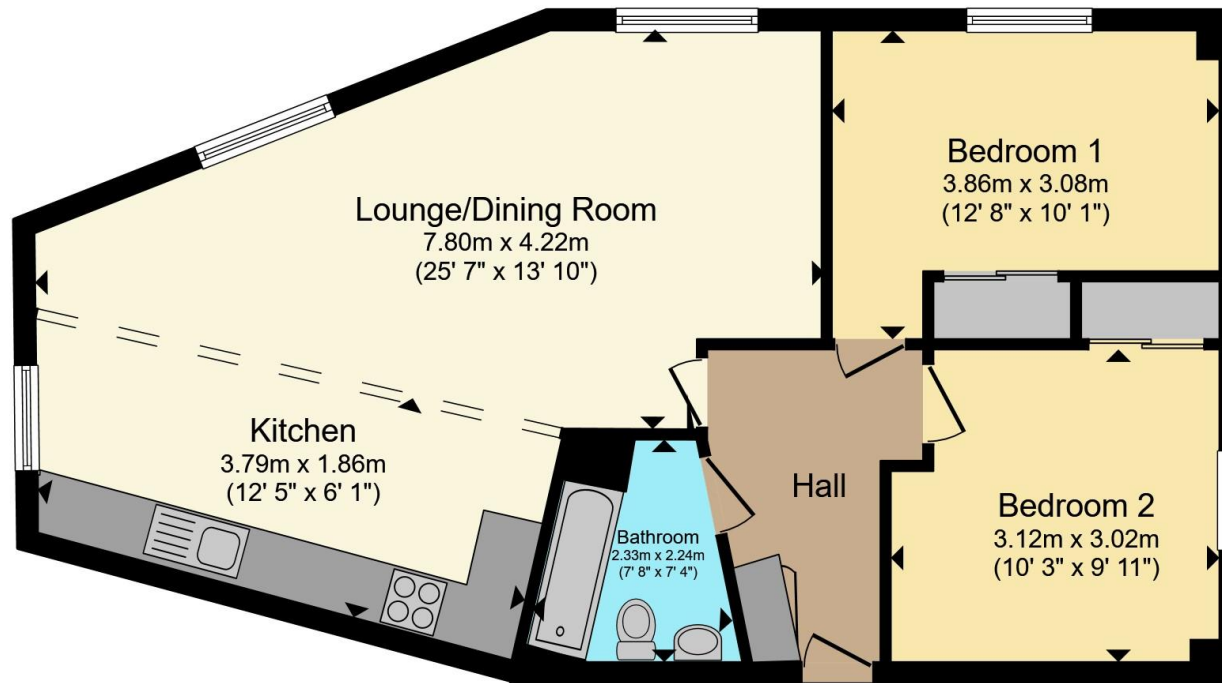
This property is an attractive opportunity for a first-time buyer or investment, appealing to a wide range of buyers.

BOOK YOUR VIEWINGS NOW!









Floor Plan

Total floor area 65.9 m² (710 sq.ft.) approx

This floor plan is for illustrative purposes only. It is not drawn to scale. Any measurements, floor areas (including any total floor area), openings and orientation are approximate. No details are guaranteed, they cannot be relied upon for any purpose and they do not form part of any agreement. No liability is taken for any error, omission or misstatement. A party must rely upon its own inspection(s). Powered by www.propertybox.io

Connells

To view this property please contact Connells on

T 01752 674 467
E plymouth@connells.co.uk

32 Mannamead Road
 PLYMOUTH PL4 7AA

EPC Rating: C

Council Tax
 Band: B

Service Charge: Ask
 Agent

Ground Rent:
 Ask Agent

Tenure: Leasehold

view this property online connells.co.uk/Property/PLH312928

This is a Leasehold property. We are awaiting further details about the Term of the lease. For further information please contact the branch. Please note additional fees could be incurred for items such as Leasehold packs.



1. MONEY LAUNDERING REGULATIONS Intending purchasers will be asked to produce identification documentation at a later stage and we would ask for your co-operation in order that there will be no delay in agreeing the sale. 2. These particulars do not constitute part or all of an offer or contract. 3. The measurements indicated are supplied for guidance only and as such must be considered incorrect. Potential buyers are advised to recheck measurements before committing to any expense. 4. We have not tested any apparatus, equipment, fixtures, fittings or services and it is in the buyers interest to check the working condition of any appliances.

Connells Residential is registered in England and Wales under company number 1489613, Registered Office is Cumbria House, 16-20 Hockliffe Street, Leighton Buzzard, Bedfordshire, LU7 1GN. VAT Registration Number is 500 2481 05.

See all our properties at www.connells.co.uk | www.rightmove.co.uk | www.zoopla.co.uk

Property Ref: PLH312928 - 0002