




stevens
and carter

- Open Plan Living
- Disability Adapted
- Downstairs Bedroom
- Immaculate Presentation
- Three Further Bedrooms
- Modern Fitted Kitchen
- Versatile Accommodation
- Utility Room
- Wet Room
- Chain Free



Freehold
£300,000

 4 BEDROOM

 2 RECEPTION

 2 BATHROOM

 0 GARAGE

Paul Close, Hailsham

Paul Close, Hailsham

DESCRIPTION

Versatile Family Home | Open Plan Living | Immaculate Presentation | Four Bedrooms Including Ground Floor Bedroom | Jack and Jill Wet Room | First Floor Family Bathroom | Cul de Sac Location | Utility Room | Chain Free

Situated within the ever popular Lansdowne area of North Hailsham, this beautifully presented four bedroom terraced house offers flexible and thoughtfully designed accommodation, ideal for a wide range of buyers.

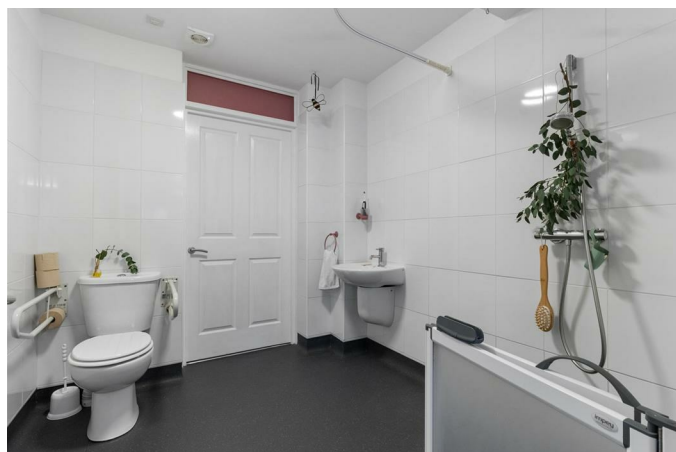
The ground floor features a stunning open plan living and kitchen space, creating a bright and sociable hub of the home, complemented by a separate utility room. A particular highlight is the spacious ground floor double bedroom (or further reception room) with direct access to a 'Jack and Jill' style wet room, making the layout well suited to a variety of living arrangements.

Upstairs, there are three further well proportioned bedrooms served by a modern family bathroom, making this an ideal home for families.

The open plan layout and ground floor facilities mean the property can also be suitable for a wheelchair user, should this be required, without detracting from its appeal.

Further benefits include gas fired central heating, uPVC double glazing and both front and rear gardens. The property is tucked away in a quiet cul-de-sac position and is offered to the market chain free.

An internal viewing is essential to fully appreciate the presentation, versatility and thoughtful design of this excellent home. Please take a look at our professional photography and contact us to arrange your accompanied viewing.





Paul Close, Hailsham

Entrance Lobby

Sitting Room Area

Kitchen

Utility Room

Bedroom One / Reception Room

Jack & Jill Style Wet Room

Stairs To First Floor

Bedroom Two

Bedroom Three

Bedroom Four

Family Bathroom

Front and Rear Garden



Paul Close, Hailsham

