



**POOLE  
TOWNSEND**

# Teasdale Road, Barrow-in-furness, LA14 3SF

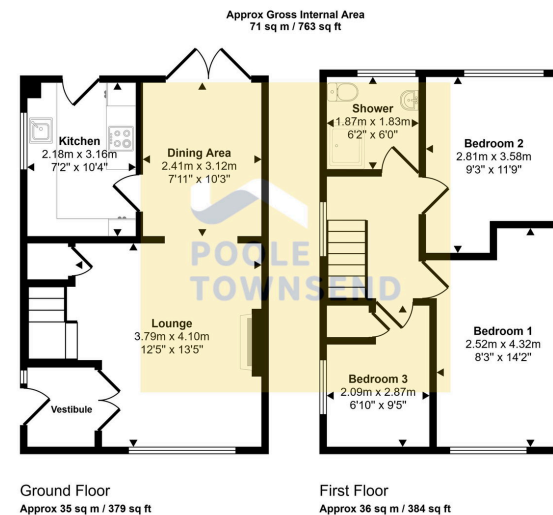
£235,000

3 1 1



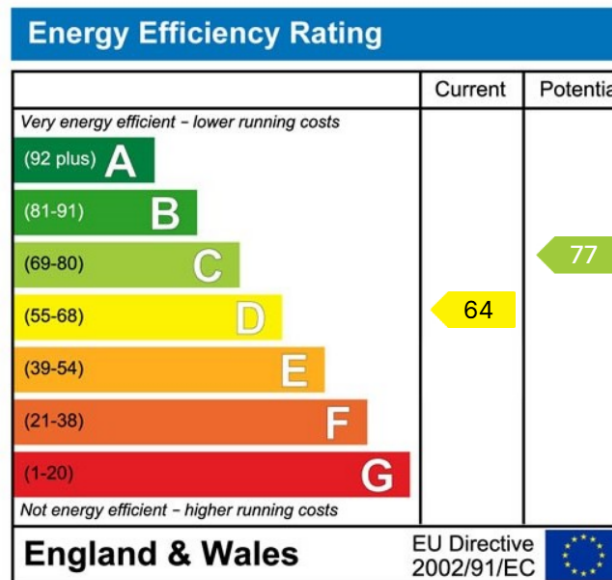
- 3 Bed Semi-Detached Property
- Beautifully Presented Throughout
- Driveway & Garage
- Modern Kitchen With Integrated Appliances
- UPVC Double Glazing Throughout
- Sought After Location
- Corner Plot With Gardens; Front, Side & Rear
- Open Plan Lounge / Diner
- Gas Fire Central Heating
- Council Tax Band - B





This floorplan is only for illustrative purposes and is not to scale. Measurements of rooms, doors, windows, and any items are approximate and no responsibility is taken for any error, omission or mis-statement. Icons of items such as bathroom suites are representations only and may not look like the real items. Made with Made Snappy 360.

**NEW!** Situated on a corner plot with enclosed garden to the front, side and rear where there is a driveway and a garage. This property is beautifully presented throughout, offering an open plan lounge and dining room with double doors to the garden and a second door leading into the kitchen with solid work surfaces and integrated appliances. The landing has loft access and doors to the modern shower room and three bedrooms. The property also features a gas-fired central heating system with a modern Baxi boiler and UPVC framed double glazing throughout. Local amenities including the community centre, bus service and the Crown pub are nearby.



Visit us at  
[www.pooletownsend.co.uk](http://www.pooletownsend.co.uk)  
[enquiries@pooletownsend.co.uk](mailto:enquiries@pooletownsend.co.uk)

We are open  
 Monday – Friday 9.00 – 5.00  
 Saturday 9.00 – 1.00

Barrow 01229 811811  
 Ulverston 01229 588111  
 Grange 015395 33316  
 Kendal 01539 734455  
 Milnthorpe 015395 62044